



**lionSTEEL®** Knives Italy  
Spring Collection 2020



# INNOVAZIONE

DESIGN

PRODUCTION

ASSEMBLY

ORGANISATION

MARKETING

These are the pillars of our company, thanks to which we're ready to take on the biggest challenge: Innovation.

LionSTEEL

**TiDust:** prime exemple innovation by LionSTEEL.  
The handle is made by melting titanium powder using a laser.  
It is the first knife in the world made using aerospace technology.



## ROTOBLOCK

*(Removable flipper system)*

This safety mechanism was created with the first Solid Knife: it locks the blade in place while the knife is in use, so there is no risk of it accidentally closing.



## ReF

*(Removable flipper system)*

You choose how you want to use your knife: you can unscrew the flipper using a torx if you don't need it, and insert the second screw included in the box in its place. The screw fits perfectly in the hole at the bottom of the blade.



## H.WAYL

*(Hide What Annoys You Lionsteel)*

This system makes it easier to pull out your knife and put it away in your pocket. The clip is hidden when using the knife and you can't feel it pressing against the palm of your hand when holding the knife.

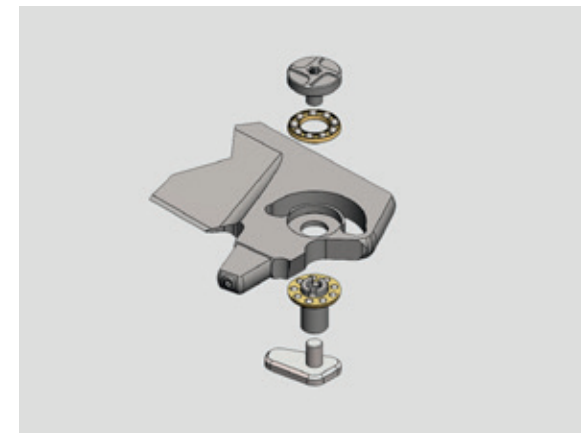


NFC technology has been adopted for different payment methods and logistics systems using cards and smartphones. Here, you can use it to check the ROK product details, activate the warranty, contact customer services and find out more about LionSTEEL.



## SOLID<sup>®</sup>Knife

LionSteel made its first Solid knife back in 2010 and it's been the starting point for the Company revolution... When a new Solid knife comes to life it's always exciting and with the ROK a higher quality outcome has been reached. The frame comes out milling a single solid piece of titanium or aluminum, so the handle is a single strong element of the knife.



The IKBS ball bearing system improves the knife opening and closing movements, and it guarantees a fast and smooth action (Flavio IKOMA idea).



# ROK TITANIO

The folding knife is built with a Solid Ti6Al4V titanium monolithic frame lock handle available in natural grey with blue clip, or matt bronze with grey clip variations.  
It features a M390 Stainless steel blade while the machined clip is made in titanium.  
The packaging is the same of the Damascus one, so there are included the NFC connector and the torx key ring with T6 and T8 tools.

Design by Molletta

Blade length: 83 mm. – 3.27 in.  
Blade thickness: 4,5 mm. – 0.18 in.  
Total length: 198 mm. – 7.80 in.  
Total weight: 159 gr. – 5.60 oz.  
Frame: Ti6Al4V  
Blade steel: M390 Bohler  
Packaging: Cardboard rigid box



ROK G



ROK B



# ROK ALUMINUM

The folding knife is built with an Ergal aluminum monolithic frame lock handle available in black, red or orange color.  
It features a M390 Stainless steel blade, it can be satin or black MilSpec finished. The aluminum machined clip has the same color of the handle when the blade is satin, while it's black when the blade is MilSpec.  
There's another dedicated packaging for the aluminum ROK that still includes the NFC connector and the L torx tool.

Design by Molletta

Blade length: 83 mm. – 3.27 in.  
Blade thickness: 4,5 mm. – 0.18 in.  
Total length: 198 mm. – 7.80 in.  
Total weight: 126 gr. – 4.44 oz.  
Frame: Aluminum  
Blade steel: M390 Bohler  
Packaging: Cardboard rigid box



ROK A OS



ROK A RB



ROK A BB



ROK	ORANGE	RED	BLACK
SATIN BLADE	ROK A OS	ROK A RS	ROK A BS
BLACK BLADE	ROK A OB	ROK A RB	ROK A BB





Clip con sistema **H W A Y.** L  
ide hat anoyou  
steel

Total length: 180 mm. - 7.09 in.  
Blade length: 80 mm. - 3.15 in.  
Sharpening length: 75 mm. - 2.95 in.  
Closed length: 100 mm. - 3.94 in.  
Total thickness: 14 mm. - 0.55 in.  
Blade thickness: 3.3 mm. - 0.13 in.  
Total weight: 88 gr. - 3.10 oz.  
Blade steel: M390 sintered stainless steel, 59-60 HRC  
Blade finish: Satin finished  
Locking system: Slipjoint  
Frame: Titanium 6Al4V  
Handle colour: Grey  
Packaging: Cardboard box

SlipJoint knife, “no locks” mechanism, built from a single piece of material completely obtained by milling. SOLID LionSteel technology. The blade is made out of M390 stainless steel, satin finished. The spring tip is reinforced with a treated stainless steel insert. This knife features the patented lionSTEEL HWAIL system that allows you to “hide” the clip inside the handle, so it can be used at owner’s discretion. The presence of the IKBS system allows a very smooth movement of the blade.

Design: Molletta



TL A BS



TL A RS



TL A GS



TL A OS



Total length: 180 mm. - 7.09 in.  
Blade length: 80 mm. - 3.15 in.  
Sharpening length: 75 mm. - 2.95 in.  
Closed length: 100 mm. - 3.94 in.  
Total thickness: 14 mm. - 0.55 in.  
Blade thickness: 3.3 mm. - 0.13 in.  
Total weight: 66 gr. - 2.33 oz.  
Blade steel: M390 sintered stainless steel, 59-60 HRC  
Blade finish: Satin finished  
Locking system: Slipjoint  
Frame: Aluminium  
Handle colour: Black  
Packaging: Cardboard box



# SR Flipper TITANIUM



SR 22 mini

Lunghezza lama / Blade length: 80 mm. - 3,15 in  
Spessore lama / Blade thickness: 3,5 mm. - 0.13 in  
Lunghezza totale / Total length: 180 mm. - 7,08 in  
Peso totale / Total weight: 128 gr. - 4,51 oz  
Scocca / Frame: Titanium  
Acciaio lama / Blade steel: Sleiþner  
Imballo / Packaging: Leather sheath

The SR-11 represents the evolution of the historical SR-1 model, award winner at at Blade Show 2010.  
The additional features are: flipper opening with ball-bearing system, two ball bearing with facilitate the opening and closing of the blade, and a window breaker in tungsten carbide.  
Moreover, as its predecessor, the SR-11 features a Rotoblock system, which blocks the frame in the open position.  
The frame is obtained from a unique piece, completely worked with 4-axis machining.  
The frame point is made of steel, in order to avoid wear of the titanium frame body.  
The clip is reversible, and can be mounted on both sides.

Design by Molletta



SR22 mini

SR11 original

SR11 B

Imballo: Fodero in pelle  
Packaging: Leather sheath

SR 11 original

Lunghezza lama / Blade length: 94 mm. - 3.70 in.  
Spessore lama / Blade thickness: 4.5 mm. - 0.18 in.  
Lunghezza totale / Total length: 211 mm. - 8.31 in.  
Peso totale / Total weight: 187 gr. - 6,60 oz.  
Scocca / Frame: Titanium 6Al4V  
Acciaio lama / Blade steel: Sleiþner  
Imballo / Packaging: Leather sheath



	GREY	BRONZE
SR11	SR11 G	SR11 B
SR22 mini	SR22 G	SR22 B

# SR Flipper ALUMINUM



SR 11 original aluminum

Lunghezza lama / Blade length: 94 mm. - 3.70 in.  
Spessore lama / Blade thickness: 4.5 mm. - 0.18 in.  
Lunghezza totale / Total length: 211 mm. - 8.31 in.  
Peso totale / Total weight: 146 gr. - 5.15 oz.  
Scocca / Frame: Alluminum  
Acciaio lama / Blade steel: M390

Design by Molletta

The SR-11 represents the evolution of the historical SR-1 model, award winner at at Blade Show 2010.  
The additional features are: flipper opening with ball-bearing system, two ball bearing with facilitate the opening and closing of the blade, and a window breaker in tungsten carbide.  
Moreover, as its predecessor, the SR-11 features a Rotoblock system, which blocks the frame in the open position.  
The frame is obtained from a unique piece, completely worked with 4-axis machining.  
The frame point is made of steel, in order to avoid wear of the titanium frame body.  
The clip is reversible, and can be mounted on both sides.



SR22 mini

SR11 original

SR11 BLACK



	ORANGE	RED	BLACK
SR 11 Satin	SR11A OS	SR11A RS	SR11A BS
SR 11 Black	SR11A OB	SR11A RB	SR11A BB
SR 22 mini Satin	SR22 A OS	SR22 A RS	SR22 A BS
SR 22 mini Black	SR22 A OB	SR22 A RB	SR22 A BB



# TRE

Folding knife with Titanium Fame Lock-system. This knife is equipped with a patented system that allows the user to carry the knife with or without the Flipper feature choosing thus to screw or remove it from the blade.

The knife has a fully machined Titanium frame, pocket clip and spacer.

The handle has two different versions: titanium or Carbon Fiber.

It is provided with the IKBS ball-bearing pivot system to improve the knife opening and closing and give the T.R.E. knife an ultra-fast opening action.

*Design by Molletta*

## THREE RAPID EXCHANGE

The user may choose three ways to equip his knife:

- basic version without Flipper and pin on the blade
- Thumb Stud version with the pin on the blade
- with the flipper for a quick opening action.



TRE FC



TRE GY



TRE BL



TRE BR



Blade: M390 Bohler  
Blade length: 74 mm  
Blade thickness: 3.5 mm  
Overall length: 175 mm  
Frame: Titanium 6Al4V  
Spacer & clip: Titanium 6Al4V  
IKBS ball bearing  
Stainless steel lock-bar tip  
Weight: Carbon Fiber 62 gr, Titanium 74 gr  
Handle: Titanium or Carbon Fiber  
T.R.E: LionSTEEL Patent pending

# TRE G10

Folding knife with titanium frame Lock-system. For this model the Flipper is a permanent and integral part of the blade and cannot be removed from it.

It comes with a 3D machined G10 handle and in four different colours: black, green, orange and pink.

The T.R.E. knife comes with Bohler M390 stainless steel blade.

Its spacer is in G10 black, while its frame and clips are in grey Titanium. This model comes in a paper box packaging.

*Design by Molletta*



TRE GBK



TRE GGR



TRE GOR



TRE GPK



Blade: M390 Bohler  
Blade length: 74 mm  
Blade thickness: 3.5 mm  
Overall length: 175 mm  
Weight: 64 gr  
Frame: Titanium 6Al4V  
Handle: G10  
Spacer: Black G10  
Clip: Solid Titanium 6Al4V  
IKBS ball bearing  
Stainless steel lock-bar tip





bestMAN

DOUBLE BLADES



BM13 CF - Carbon Fiber

BM13 UL- Olive Wood

BM13 CVN - Natural Canvas

BM13 EB - Ebony Wood

BM13 ST - Santos Wood

Blade type: DOUBLE BLADES

Clip blade length: 71 mm. – 2.80 in.  
Wharncliffe blade length: 65,2 mm. – 2.57 in.  
Blades thickness: 2,5 mm. – 0.1 in.  
Blades steel: M390 stainless  
Total length: 237,5 mm. – 9.35 in.  
Total weight: 93 gr. – 3.28 oz  
Lock system: Slipjoint.

bestMAN

ONE BLADES



bestMAN is the new SlipJoint knife by lionSTEEL.  
The Company goes back in time, back to the classics, developing a modernized version of this knife using innovative technology and quality materials.  
bestMAN comes in two variations: one M390 stainless steel Clip blade or two blades, Clip and Wharncliffe; bolsters are made out of titanium and the handle scales are available in different fine woods, carbon fiber or natural Canvas.  
Dimensions and weight make it the ideal EDC folder, bestMAN is your close friend that helps you in the everyday duties and it's always with you in the best of times.

Blade type: ONE BLADE

Clip blade length: 71 mm. – 2.80 in.  
Wharncliffe blade length: 65,2 mm. – 2.57 in.  
Blades thickness: 2,5 mm. – 0.1 in.  
Blades steel: M390 stainless  
Total length: 170 mm. – 6.7 in.  
Total weight: 68 gr. – 2.40 oz.  
Lock system: Slipjoint.

CLIP - line



BM1 - Carbon Fiber



BM1 - Santos Wood



BM2 - Ebony Wood



BM2 - Natural Canvas



BM2 - Olive Wood

BLADE	OLIVE	CARBON FIBER	SANTOS	NATURAL CANVAS	EBONY
CLIP	BM1 UL	BM1 CF	BM1 ST	BM1 CVN	BM1 EB
DROP	BM2 UL	BM2 CF	BM2 ST	BM2 CVN	BM2 EB





GT01 UL

GT01 ST

Aisi 420 stainless steel clip, bolsters and liners are made of titanium with a special rounded milling to improve sensitivity in the handle.



## GITANO

*"My idea behind the Gitano was to make a folding knife that is based on old south european folding knives in a new style. What I like about these knives is its elegant lines and often large blades in relation to the handles".*  
Gudy van Poppel

LionSteel loved Gudy's idea and decided to start this new collaboration with him and Tools For Gents that helped us to devolope the final versions. Gitano is an E.D.C. (Every Day Carry) folding knife that joined the "Tradition by LionSteel" collection.

Design Gudy van Poppel and TFG collaboration



GT01 GBK



GT01 CF



GT01 CVG



Total length: 192 mm. - 7.56 in.  
Blade length: 85 mm. - 3.35 in.  
Sharpening length: 81 mm. - 3.19 in.  
Closed length: 108 mm. - 4.25 in.  
Total thickness: 12 mm. - 0.47 in.  
Blade thickness: 3 mm. - 0.12 in.  
Total weight: 91 gr. - 3.21 oz.



# T5 CANVAS



T5 CVG

T5B CVG

Total length: 252 mm. - 9.92 in.  
Blade length: 128 mm. - 5.04 in.  
Blade thickness: 5 mm. - 0.20 in.  
Net weight: 274 gr. - 9.67 oz.  
Handle: Micarta  
Blade steel: Niolox

provided with black leather  
sheath featuring Molle system



# T5

T5 is the "tactical fixed blade" of the family, it features a Niolox stainless steel blade, which is available either satin finished or PVD coated then stonewashed. As it happens for its bigger brother M7, The SOLID® knife handle is obtained from a 4D machined Micarta block, this procedure makes the grip stronger and safe. The T5 is designed by Molletta and it is dedicated to the users who like outdoor activities and the tactical world.

*Design by Molletta*



T5B MI



T5 MI





# M7 CANVAS



Total length: 315 mm. - 12.40 in.  
Blade length: 180 mm. - 7.09 in.  
Blade thickness: 5.5 mm. - 0.22 in.  
Total weight: 407 gr. - 14.36 oz.  
Blade finish: Satin finished or Black coated  
Sheath: Cordura + Kydex - MOLLE System

The M7 is supplied with a Kydex sheath with a Cordura lining, and a belt loop joined using the MOLLE system for a firm and easy wearability.

## M7

The biggest of lionSTEEL outdoor knives. Its large dimensions and extreme handiness allow a strong resistance to the most dissimilar camp uses, including chopping and batoning. It is a knife with a Micarta handle made with SOLID® knife technology.

The M7 is equipped with a Sleipner stainless steel blade, which is available either satin finished or black coated. This kind of blade offers a special resistance to usage and an easy sharpening. The SOLID® knife handle, obtained from a 4D machined Micarta block, makes the grip strong and safe, and guarantees the greatest strength at the same time.

The M7 was designed by Molletta to answer the need to cut out tree branches during a challenging excursion, and, for this reason, the weight is mostly distributed on the blade. The M7 dimensions, weight and handiness make it the ideal companion for every outdoor activity.



M7 MS

M7 MB

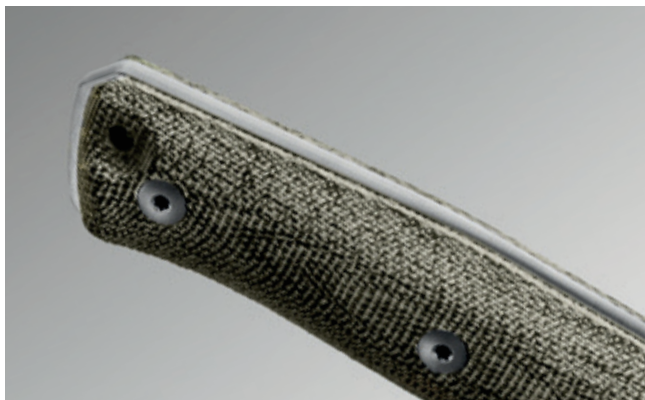




**B35** - CVG Green Canvas

**B35** - GBK Black G10

LionSteel range of fixed blade knives is finally enriched with the new born “B35” Bushcraft knife. The B35 is the ultimate tool for the natural life enthusiasts, great for wood carving thanks to the stone-washed Sleipner stainless steel blade and fire-crafting using the back flat tang



## B35

The B35 is a fixed blade knife, suitable for every camp usage and especially useful for mountain hikes. The B35 limited dimensions make it easy to wear without penalizing its bushcraft knife features.

The B35 is equipped with a Sleipner steel blade, which guarantees a high endurance sharpening. The blade is available with a satin finish while the handle is provided in five versions: olive wood, Santos wood, walnut wood, black G10 and green Canvas. Design by M. Colletta



**B35 WN** - Walnut wood

**B35 ST** - Santos Wood

**B35 UL** - Olive Wood



Total length: 203 mm. - 7.99 in.  
Blade length: 90 mm. - 3.54 in.  
Blade steel: Sleipner stainless steel,  
Blade finish: Satin finished  
Sharpening length: 87 mm. - 3.43 in.  
Total thickness: 17 mm. - 0.67 in.  
Blade thickness: 3.7 mm. - 0.15 in.  
Total weight: 118 gr. - 4.16 oz.  
Handle material: Walnut  
Sheath: Leather with double seam





**M4 CVN**

**M4 CVG**

## M4

The M4 is a fixed blade knife, suitable for every camp usage and especially useful for mountain hikes. The M4 limited dimensions make it easy to wear without penalizing its bushcraft knife features.

The M4 is equipped with a M390 sintered steel blade, which guarantees a high stainlessness and a long endurance sharpening. The blade is available with a satin finish while the handle is provided in six versions: Olive Wood, Santos Wood, Walnut Wood and Black G10, Natural Canvas and Green Canvas.

Designed by Molletta, the M4 has a handle with a unique ergonomics, that allows to hold the knife in both ways, that is to say, with the thumb towards the blade or towards the end of the handle.



The M4 is supplied with a double seam leather sheath.



**M4 G10**



**M4 WN** - Walnut Wood



**M4 ST** - Santos Wood



**M4 UL** - Olive Wood

Total length: 205 mm. - 8.07 in.  
Blade length: 95 mm. - 3.74 in.  
Blade thickness: 4 mm. - 0.16 in.  
Total weight: 145 gr. - 5.11 oz.  
Blade steel: M390 59-61 HRC  
Blade finish: Satin finished  
Sheath: Leather with double seam





**LionSteel sas**

di Pauletta Gianni M. D.

Via La Mola, 9

33085 Maniago (PN) Italy

Tel. +39 0427 71984

Fax +39 0427 709032

[www.lionsteel.it](http://www.lionsteel.it)  
[info@lionsteel.it](mailto:info@lionsteel.it)