

15



CRKT®
CONFIDENCE IN HAND™



'15

CONTENTS

INNOVATION TIMELINE.....	3-4
INNOVATIONS & TECHNOLOGY	5
SAFETY & ACTUATION.....	6
ED HALLIGAN & KIT CARSON TRIBUTE.....	7-8
DESIGNERS	9-12
NEW PRODUCTS	13-30
DEALER WORKBOOK	31
EVERYDAY CARRY	31-60
HUNT & FISH	61-65
OUTDOOR	65-68
SURVIVAL	68-72
MULTI-TOOL	72-75
TACTICAL.....	76-90
ACCESSORIES	91
WARRANTY.....	93



ANOTHER YEAR HAS PASSED


You don't make it this far and have a successful 20th anniversary year by resting on your laurels. You're constantly striving to make knives that are lighter, stronger, and—above all—safer. You're trying out new advancements. Perfecting them. Then once they're ready, bringing them to market for all to appreciate.

Since 1994, innovation has been at the heart of everything we do here. We've been fortunate to partner with the brightest minds in the business who share that same vision. Thanks to their designs, we've created blades that are easier to open with IKBS™, the Carson Flipper, and our patented OutBurst® assisted opening mechanism. We've made knives safer with LAWKS® and AutoLAWKS™, L.B.S.™, and the patented Klecker Lock. This year we're upping the ante once again with our latest safety innovation, the Ikoma Lock Safety (ILS™) that uniquely sets a pin between the locking liner and frame.

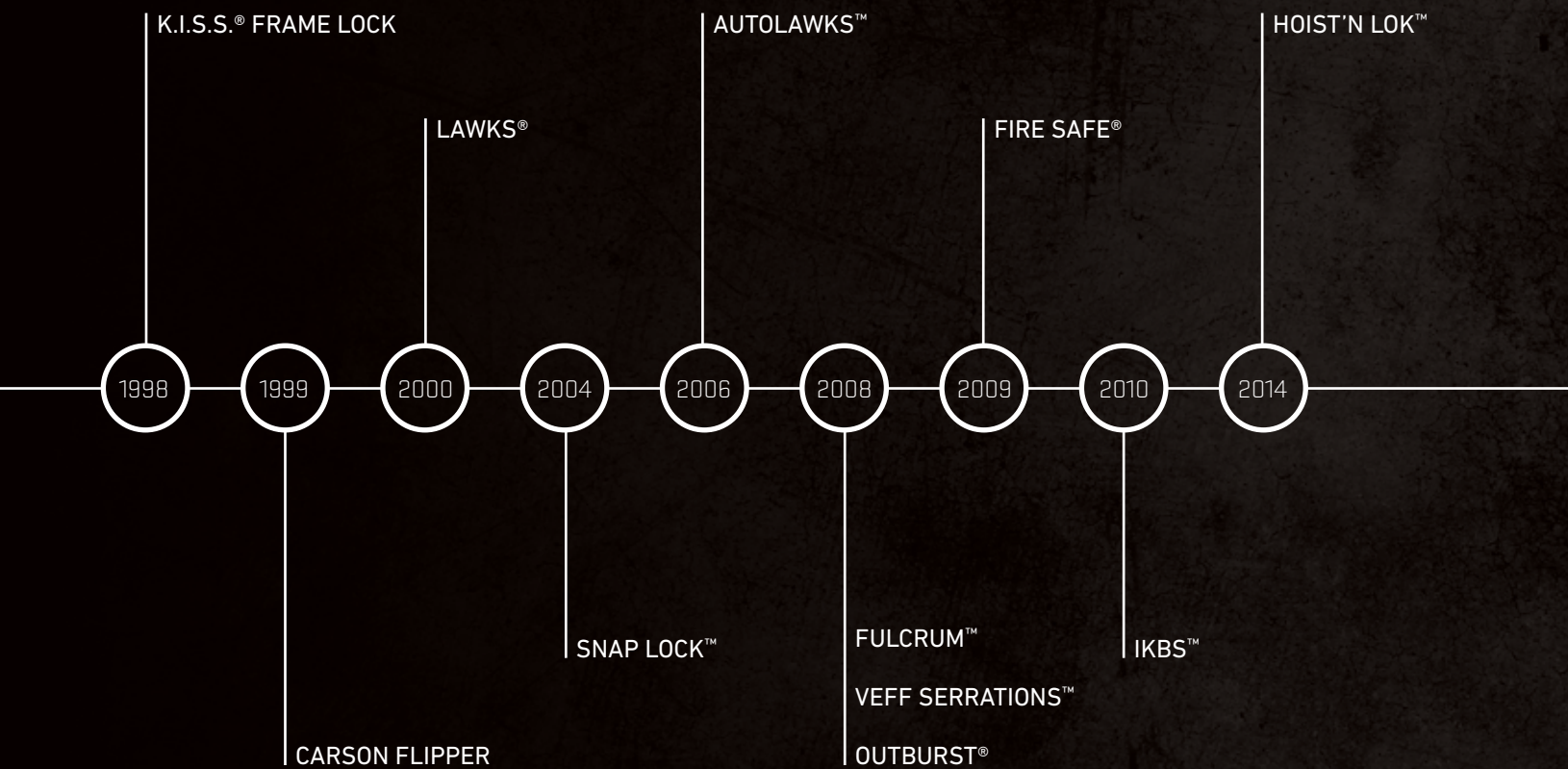
Our innovations have defined the industry. They've given customers confidence in hand with tools that have stood the test of time. As we enter our 21st year, we look forward to continuing this tradition of moving the industry forward. Because if the mighty Columbia River, from which we got our name, has taught us anything, it's this:

You don't go anywhere sitting still.

We invite you to join us along the path to progress. ○



Rod Bremer
CRKT Founder





2015

ILS™ —THE EVOLUTION OF SAFETY

Visionary custom knifemaker and innovator of the I.K.B.S.™ pivot system, Flavio Ikoma decided to evolve the level of safety with the new Ikoma Lock Safety (ILS™). Flavio ingeniously added a lever with an elbow, set between the liner and frame, which prevents the locking liner from slipping down the blade ramp. Your lock is safer and you're more protected.

The safety automatically engages when you open your knife, so your level of safety ramps up from the start. When you're done using your knife, press down on the ILS™ thumb rest and slide the locking liner over to disengage the safety.

Knives are hard use tools designed to get the job done. The new, intuitive, ILS™ gives you something extra to keep your digits safe in the process.

Exclusively available on the new No Time Off™ knife (CRKT® models 5350, 5351).

INNOVATION & INTEGRITY

Innovation means building the products that will continue to lead, and define, the industry in terms of creativity and utility. It means constantly asking ourselves how we can be better.

Integrity is critical to how we've chosen to do business. It means interacting with our customers, and each other, honestly and directly. It also means building products that perform reliably, and a brand that behaves consistently, year after year.

THE TECHNOLOGY



IKBS™

Designer Flavio Ikoma and Rick Lala invented this system that sets lubed ball bearings into the folding knife pivot. The result is rapid blade deployment that is smooth and fast. Go ahead: set a flipping land speed record.



KLECKER LOCK

Designer Glenn Klecker seamlessly integrated this lock directly into the handle. Goodbye traditional locking mechanisms. Hello new and exciting knife designs.



HOIST'N LOK™

An innovative lobed and knurled cam successfully locks the rope into place, eliminating the need for a difficult and often inconvenient tie off. With professional hunting guide Russ Kommer's innovation, hoisting your game is now as easy as cleaning it with one of his blades.



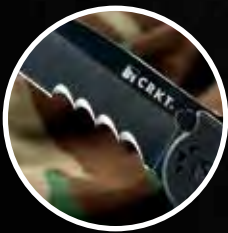
PARA-SAW™

Outside, it's a braided paracord bracelet. Inside, it's a stainless steel tungsten carbide-coated wire saw. You'll only need to recognize the Ken Onion-designed Para-Saw™ for what it really is: a way to save your bacon in emergency survival calamities.



M16®-ZLEK

When situations are coming on fast, you don't have time to search for everything you need. Thankfully, the M16® Law Enforcement knives' on-duty features include the Carson Flipper, seat belt strap cutter, and tungsten carbide window breaker, all built right in. Protect and serve.



VEFF SERRATIONS™

Some hone edges. Others, like "Edgeologist" Tom Veff, reinvent them, with his exclusive and patented Veff Serrations™ that offer superior cutting of cordage, rope, and fibrous materials—none are safe.



VEFF FLAT TOP SERRATIONS®

Tom Veff knows a thing or two about edges. As the world's finest and only "Edgeologist," he specializes in serrations that improve cutting efficiency. You can go through fibrous materials like a torched straight edge does through cold butter.



SWINDLE™ CLIP

You don't see the clip, do you? That's just the point with the Ken Onion-designed pocket clip on the side of the knife. Spring tensioned, it provides an improved hold on your pocket...and looks classy when it catches your eye.



EXITOOL®

It's a seat belt cutter that clips to your belt. It's a window breaker and L.E.D. flashlight. If someone's trapped in a vehicle, Russ Kommer's tool is the difference between life and death. Save lives.



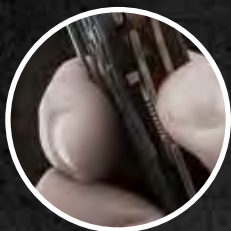
WILLIAMS FLASHLIGHTS

High beams. Low beams. We-could-use-some-help-here beams. With the James Williams-designed flashlights, you can easily switch back and forth between all of them for personal safety and hard use tactical applications.

SAFETY & ACTUATION

FOLDER SAFETY SYSTEMS

You want to grab your knife with confidence knowing it'll handle any job. That's why CRKT® has led the way in developing lock and safety systems that provide the optimum level of safety for each folding knife's intended use.



ILS™

The Ikoma Lock Safety or ILS™ gives you an extra layer of safety when work stuff like lint, dirt and grease, gunk up your locking liner. Flavio Ikoma, innovator of the I.K.B.S.™ pivot system, ingeniously added a lever with an elbow, which automatically puts a pin between the liner and frame. This helps prevent the liner from slipping down the blade ramp. When you're done using your knife, press down on the ILS™ thumb rest and slide the locking liner over to disengage the safety. It's always good to have a backup. Especially when it comes to safety.



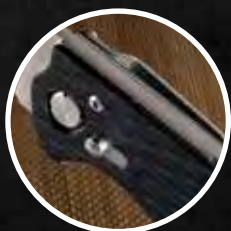
LAWKS®

The Lake and Walker Knife Safety innovation. LAWKS® sets a pin between the locking liner and the frame. This pin acts as an additional layer of safety, so the locking liner is less likely to disengage during use. To engage the safety, push the LAWKS® lever forward. To close the knife, pull the LAWKS® lever back, slide the locking liner over, and fold the blade into the closed position.



AUTO LAWKS™

The Lake and Walker Knife Safety innovation taken to the next level. AutoLAWKS™ automatically sets a pin between the locking liner and the frame. This pin acts as an additional layer of safety, so the locking liner is less likely to disengage during use. To close the knife, pull the AutoLAWKS™ red button lever back, slide the locking liner over, and fold the blade into the closed position.



L.B.S.™

Who better to develop and patent the best safety system for locking folding knives than the father of them all—Ron Lake. With L.B.S.™ (Lockback Safety), you just lock the blade in the open or closed position and slide a button forward. Done.

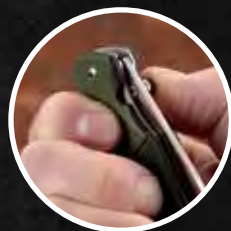
FOLDER ACTUATION SYSTEM

When you're out in the field or someone needs help, you don't want to mess around with opening your knife. To that end, CRKT® models have traditionally featured convenient, prominent, thumb studs. But for those who need greater speed when opening their knives, we offer the three following innovations:



OUTBURST® ASSISTED OPENING

Lightning fast. Ridiculously easy to use. These are just a few of the ways people have described our patented opening system. Just manually open the blade up to 30° and the patented OutBurst® assisted opening mechanism springs the knife fully open so that you're good to go. The powerful spring also holds the blade securely closed when not in use. On many models, we've combined the OutBurst® system with our locking and actuation systems like Fire Safe® for a new level of ease of operation, as well as security.



FIRE SAFE® SAFETY

Easy-to-open and incredibly safe, you'll see why we came up with the name we did for our patented system that relies on a pin at the locking liner. The actuation mechanism operates on folders through one of two opener styles:

- **FIRE SAFE® THUMB STUD**

Press the spring loaded thumb stud to release the locking liner and pin.



- **FIRE SAFE® THUMB DISK**

Press the thumb disk to release the locking liner and pin.

Whichever you use, the mechanism is easy and intuitive. Simply nudge your thumb outward and OutBurst® handles it from there, propelling your blade into an open and locked position. This pressing and nudging of the blade prevents accidental opening to put you (and your blade) in complete control of the situation.



CARSON FLIPPER

Retired Sgt. Major and knifemaker Kit Carson defined this ingenious opener that challenged the conventional ways of opening a knife. With a simple finger pressure on the "flipper" incorporated into the blade, the blade flips open and locks, so you're ready for action. Once open, the flipper works great as a blade guard as well. Look for the Carson Flipper featured on many of our tactical knives.



ED HALLIGAN

1933 - 2014

In November of this year, we were saddened by the passing of Ed "Big Daddy K.I.S.S.®" Halligan of Ocean Springs, Mississippi.

A true craftsman at heart, he spent his early days working on planes for both the United States Air Force and as a mechanic for Delta Airlines. Knives were always Ed's true passion and in 1998 he was instrumental in CRKT's early growth with an ingenious design that went on to gain national and international acclaim: the K.I.S.S.® (Keep It Super Simple) knife.

His persona helped define CRKT in our early days and he was an ambassador for us in the design community, often sending other designers our way.

Truly young at heart, Ed was a remarkable endurance athlete who frequently took 100-mile bicycle and horseback rides well into his 70's, leaving many of us in his dust. But he would more than make up for it by sharing a bit of moonshine that he had hand-crafted himself.

We miss his indomitable spirit.



KIT CARSON

1951 - 2014

This past September we all lost a true friend, craftsman, and ambassador of the industry with the passing of Kit Carson of Vine Grove, Kentucky. An avid hunter and fisherman, Kit grew up enjoying the woods and trout streams in the mountains of Georgia and proudly served in the Army for 20 years, retiring as Master Sergeant.

One of the biggest names in the business, we were taken aback when he approached us with a design in our early days. After all, we'd been admiring Kit from a distance for years. We didn't have the capability to produce it at the time and couldn't believe we had to turn down the design. Two years later our paths crossed again, and the iconic M16 knife was born. So too was a fiercely loyal partnership and kinship that lasted over 17 years. Kit's contribution to the success of CRKT, and to the careers of those he mentored, is immeasurable.

"Kit took me under his wing when I was just a snot-nosed little punk knifemaker and taught, encouraged and congratulated me for my entire career," Ken Onion recalls. "He was definitely a lead-by-example kind of guy."

The Carson family has requested that donations be made to the National Parkinson Foundation at Parkinson.org.

MEET THE DESIGNERS

We're honored to partner with the best custom knifemakers in the business to produce production versions of their custom designs. Many of them have been our friends for years, both in the office and out in the field. They make everything you've seen in these pages possible. Although CRKT® has picked up a few awards over the years, we think it's important to give credit where credit is due. These designers have done more than come up with creative designs; they've helped all of us become more independent and self-reliant.



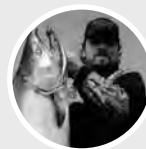
Jim Hammond
Birmingham, AL
Years Designing: 38+

Jim was the first knifemaker to work with CRKT® in 1994, but he had more than 17 years experience under his blade-decorated belt prior to that. After graduating from Clemson in 1977, he quickly climbed the ranks, specializing in military and collector grade tactical fighters like our FE™ series. A Knifemakers' Guild member since 1978, his designs—and golf shots—are all about excellence, flair, and function.



Pat & Wes Crawford
West Memphis, AR
Years Designing: 70+ combined

The Crawfords know what it's like to combine old world traditions with new features. Pat, a Knifemakers' Guild member since 1973, has been a pioneer in the combat folder genre, and was one of the first to use titanium and skeletonize his frames and handles. Wes, his son, has helped integrate exotic field materials including wood, ivory, and stag horn, into their offerings. They're famous for the CRKT® Triumph N.E.C.K.™—and for pushing each other.



Russ Kommer
Fargo, ND
Years Designing: 18

To say Russ is an outdoorsman is a bit of an understatement. A professional fishing and hunting guide, he started making knives when one of his clients brought him a custom knife and dressed an entire moose—without sharpening it. Since then he's made it his duty to build the kind of tools only he would use. It just so happens his Free Range® Hunter knives, Bear Claw's™, and Hoist'N Lok™, are the kinds other hunters use as well.



Brian Tighe
Ridgeville, Ontario, CA
Years Designing: 25

There are edged tool artisans...and then there's Brian Tighe. A Canadian Renaissance Man, he is practiced in the art of metallurgy, photography, and tool and die making. It's what helped him make the leap from a creator of high-quality custom folding knives into the top 10 elite. We were honored to have his Buy Tighe™ blade as our limited edition CRKT® 20th anniversary knife and are releasing the new Tighe Rade™ for 2015.



Ron Lake
Eugene, OR
Years Designing: 43

The "Father of the Modern Day Folding Knife," Ron has received numerous awards, had knives included in collections of the Smithsonian Institution, and even co-authored a book on the subject *How To Make Folding Knives*. Yet the things he may be most proud of are the patented safety features he's created, like LAWKS® and L.B.S.™ (Lockback Safety System). You'll find them in knives he's designed for us like the Lake 111™.



Allen Elishewitz
Lenoir City, TN
Years Designing: 32

If you're going on a mission, Allen's your man. An ex-recon marine and martial arts expert, he's designed a wide range of innovative knives with a tactical emphasis. His award-winning blades have been featured in countless magazines and have been collected by heads of state and members of royal families. Allen has been responsible for successful CRKT® models like the Elishewitz F.T.W.S.® and Tao® Tactical Pens.



Ed Van Hoy
Abingdon, VA
Years Designing: 39

Looking at the shelves in his shop, you'd almost think Ed specializes in awards rather than knives. But that just comes with the territory when you are pushing the limits with your designs. Just a few of his many highlights are: the A.G. Russell Most Innovative Folding Knife, Most High Tech Design-S.I.C.A.C, Best Fantasy Knife in the Ohio Valley Knife Show 2005, and Knife of the Year at the Blade Show 2004. Ed is living proof that if you love what you do, the rest comes easy.



James Williams
Encinitas, CA
Years Designing: 19

You don't want to mess with Sensei James Williams. Trust us. A former U.S. Army officer with more than 50 years of experience in the martial arts, he developed The System of Strategy. It's a unique approach to unarmed combat that he teaches to Special Operations units and law enforcement worldwide. When he is armed, though, you'll find him brandishing blades he's created, like the Hisshou® and Hissatsu™ fixed blades, the new Shizuka noh Ken™, and the now-legendary Hissatsu™ folder.



Michael Martinez & his father Baltazar E. Martinez
Albuquerque, NM
Years Designing: 16

Art meets science in the Martinez family. A noted sculptor and former student of R.C. Gorman, Michael specializes in large-scale bronze casting. His father, Baltazar, worked for the defense department for more than 30 years and taught Math for Engineering Design at MIT. Sadly, Baltazar has since passed. Together, they were like the yin and the yang of design, successfully combining form and function with great designs that live on in tribute like the CRKT® Ultima™.



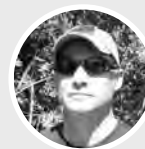
A.G. Russell
Rogers, AR
Years Designing: 42+

Simply put, A.G. Russell eats, sleeps and breathes knives. He was the first member of the Knife Digest Cutlery Hall of Fame, a founding member of the Knifemakers' Guild, founded the Knife Collectors Club™, and started the first mail order knife business. Even with a pedigree like that, if you ask him what he enjoys most, he'll still tell you it's designing custom knives.



Launce Barber
Richmond, VA
Years Designing: 16

When he's not using the Guppie® to solve everyday problems, Launce can be found using his other most valuable tool: his creative mind. He is all about great ideas and even better design, always on the cutting edge of discovering elegant new solutions for old problems.



Tom Stokes
Williamsburg, VA
Years Designing: 11

Whenever Tom hears someone say, "It doesn't take a rocket scientist to make a knife," he'll quickly correct them. After all, having been involved in the aerospace industry for more than 25 years, he brings a unique perspective to our tools using CAD software and rapid prototyping technology. It has resulted in multi-tools that are a rare combination of artistic form and function, such as the CRKT® Tool, Zilla-Tool®, Paracord Survival Bracelets, and useful survival bracelet accessories.



Tom Veff
Oregon City, OR
Years Designing: 31

Without Tom, many would be walking around with dull blades. The "Edgeologist," as he's commonly known, began sharpening knives in an industry that demands it: meat cutting. It wasn't long before he started applying his techniques to help others keep their blades sharp with his Veff Sharp™ tools. Many CRKT® knives are also indebted to Tom for his original Veff Serrations™ and the Veff Flat Top Serrations®, which have proven themselves to be the most efficient serrations patterns to date.



Doug Ritter
Gilbert, AZ
Years Designing: 13

When you need to survive, you want Doug—or one of his preferred tools—at your side. An internationally recognized authority on survival preparedness, he is Chairman of the Equipped to Survive Foundation, Inc. Doug doesn't claim to be a custom knife-maker, but he knows what works—knives that maximize functionality and minimize everything else. He keeps this in mind when collaborating on blades like the CRKT® RSK™ Survival Series.



Alan Folts
Melbourne, FL
Years Designing: 21

When it comes to knives, Alan knows all about giving back to the people. He climbed the ranks in college by entering knives in art shows. Since then he's been adamant about teaching and passing on the skills of custom knife making to others. He specializes in one-of-a-kind fixed blades that have great ergonomics and sleek futuristic designs, such as the top selling Folts Minimalist® Series.



Glenn Klecker
Silverton, OR
Years Designing: 15

Knifemaking is in the Klecker genes. Glenn, an engineer with a passion for knife and tool design, knows how to use them first-hand, having led a marine detachment in Desert Storm. Meanwhile, his son Nathan helped build the wooden Nathan's Knife Kit that teaches kids knife safety. Glenn's innovative locking mechanism, dubbed the "Klecker Lock," is featured on several CRKT® production models, including the popular NIRK™ Tighe and Graphite™ knives.



Liong Mah
Palm Bay, FL
Years Designing: 13

If we didn't know any better, we'd think the English definition of Mah is "practical." After all, it's a useful sensibility Liong incorporates into all of his designs, like the new G.S.D.™, the ever popular Eat'N Tool®, and the 2015 Mah-chete™. As a kid, where others doodled cartoons in their school notebooks, he drew knife designs. Later, having learned CAD, he was able to bring these ideas to life by collaborating with many of the top designers in the industry.



Ken Onion
Kaneohe, HI
Years Designing: 24

Ken is the real deal. The youngest ever inductee into the Blade Magazine Hall of Fame in 2008, he is recognized as one of the most innovative and successful knife designers of all time. In 1996 he created the first commercially successful assisted opening mechanism, which many knives continue to use today. Designer of the successful Eros™ folder series, as well as the award winning Hi-Jinx™, and new Hootenanny™ knife, Ken never seems to be at a loss for ideas.



Flavio Ikoma
Presidente Prudente, Brazil
Years Designing: 21

Some kids dream of being a ballplayer. Flavio wanted to be a knifemaker. In his adolescence, he worked on knives of the Japanese sword variety in his father's shop. He has gone on to learn metallurgy, to work with Ken Onion, and to become a force for innovation. Flavio brought to market the revolutionary IKBS™ ball bearing pivot system (with Rick Lala), and this year is evolving the classic locking liner with the new ILS™ safety, exclusively available from CRKT® in the new No Time Off™ knives for 2015.



MJ Lerch
Sussex, WI
Years Designing: 3

Working alongside her custom knifemaker husband, the love of design couldn't help but rub off on MJ. Thankfully, she's been getting lots of encouragement to pursue her interests by many in the knifemaking community as well. Having run the business, she knows her way around the machine shop and now uses the tools for her own designs, like the CRKT® Synergist™ knife. Matthew is left wondering when he's going to get his turn on the machines.



Ray Kirk
Tahlequah, OK
Years Designing: 25

Ray Kirk started forging knives in 1989. As an American Bladesmith Society Master Smith, he specializes in useful, simple designs that are beautiful in style. He's won many awards, including three 1st Place awards at the ABS World Championship. Ray works with the KGA of Oklahoma and was presented the Dee Daniel Boone Award for preserving the art and history of the forged blade. Ray designed the K.E.R.T.™ tool that has become a popular multi-tool.



Ryan Johnson of RMJ Tactical
Chattanooga, TN
Years Designing: 29

The fireplace is never without wood at the Johnson house. That's because for years at RMJ Tactical, Ryan has been building some of the finest custom Tomahawks this country has ever seen. Applying modern engineering to centuries-old tool and weapon concepts, he redefined the role of Tomahawks in Law Enforcement and Special Forces Military Applications.



Steve Jernigan
Milton, FL
Years Designing: 32

For as long as he can remember, Steve's had a knife permanently attached to his hand. Growing up in Florida, he'd use it for hunting, fishing, scuba diving, spearfishing and underwater salvage. So it only made perfect sense that he'd start designing knives of his own, many of which earned him nice trophies like the Best Folder of Show award at the very first Florida Invitational Knife Show. His new for this year Northcliffe™ folder looks pretty darn good, too.



Matthew Lerch
Sussex, WI
Years Designing: 31

What happens when you cross art and mechanics? You get something that looks like Matthew Lerch. Trained initially as a jeweler/watchmaker, he progressed into manufacturing and tool making. Now he has a few patents under his belt for innovations, like the Fire Safe®, and has been honored with some prestigious awards including the Buster Warenski award. Matt views knives as functional art, as evidenced in his Moxie™ and Blade Show award-winning Endorser™ design.



Ken Steigerwalt
Orangeville, PA
Years Designing: 34

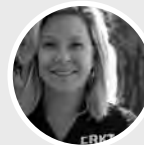
Ever since he was a kid, if Ken needed a knife, he just made one. His first one was built from a saw blade at the kitchen table using a vise, files, and sandpaper. Needless to say, he's gone on to create more highly designed knives that have won him 11 Blade Show awards in seven consecutive years, including two Best Folders awards and one Best Folder of the Year. He also co-designed the patented Fire Safe® safety innovation, which is used on many CRKT® blades.



Lucas Burnley
Albuquerque, NM
Years Designing: 11

When you ask Lucas what drew him to the knife world as a teenager, he'll tell you it was stories of survival, off-path adventures with his father, and a healthy dose of action movies.

Over the years, he has experimented with a broad range of styles to artfully combine classical examples with modern materials and techniques, such as with his Obacke™ knife. Lucas believes knives are a personal expression of independence. We couldn't agree more.



Karen Hood
Coeur d'Alene, ID
Years Designing: 14

If you're stuck in the wilderness, you want to run into Karen. With her experience in bushcraft, jungle, and urban survival, chances are good she'd save your bacon. As owner of Survival.com and the publisher and Editor-In-Chief of *Survival Quarterly Magazine*, she and her late husband, survival expert Ron Hood, created more than 30 award-winning survival videos that are widely considered to be the finest wilderness training aids in the world. Karen used everything she learned in the development of her CRKT® series of fixed blade survival knives the HCK1™ and HoodWork™



Trip Felton
Phoenix, AZ
Years Designing: 20

Trip knows what it's like to faithfully serve and protect, so he creates products that do the same for their owners. A federal law enforcement agent for over 15 years, he was called to duty by the US Army to support Operation Iraqi Freedom and provide security for a Civil Affairs unit. It was on this tour that inspiration hit. Trip saw the need to clean the hook and loop fasteners on the Army uniforms and tactical gear. So he designed the Hook & Loop Tool. It helps keep your valuable tools from going A.W.O.L. on you in the heat of battle.



Terry Renner
Palmetto, FL
Years Designing: 25+

Terry likes tinkering with things—designs, tooling, and fixtures for road and mountain bikes, and of course, blades. A mechanical designer and artist at heart, he worked in the bicycle industry for thirty years. He always had a fascination with edged objects and moonlighted with fabricating new and different locking mechanisms for folding knives. In 2006 he went to full-time knifemaker status and was awarded Best New Knifemaker at the Blade Show. Terry's a current member and a former three-term President of the Florida Knifemakers' Association.



Jason Scarvalas
Hudson, NH
Years Designing: 16

Young. Visionary. One to keep an eye on. These are just some of the ways to describe Jason. He has a unique eye for design, and his work in different areas of expertise has been featured in magazines and on television. But if you ask him about his true love, it's knives. Every piece he designs has maximum quality, purpose, and functionality, as is evidenced in his new series of quick release paracord bracelets



Abe Elias
Leamington, Ontario, CA
Years Designing: 11+

Abe knows a thing or two about power. Whether it's a V-8 engine he worked on as an autoworker or a well-crafted knife that will cut through anything, he developed a love of steel at a young age. Abe got his first knife at the age of six as a gift from an uncle and it spurred him on to become a collector by the age of ten, buying knives with his paper route money. Having designed and made knives since 2003, Abe's passion for the craft is evident in his Saker™ Bushcraft knife, not to mention all the articles he edits and writes for *Knives Illustrated*, *Knife World* and *Blade Magazine*.



Larry Fischer
Boise, ID
Years Designing: First Year

An avid traditional bowhunter, outdoorsman, and conservationist, Larry's no-nonsense approach to all he endeavored was apparent in everything he did. Larry served on the National Board of Directors for Backcountry Hunters and Anglers, was a lifetime member and past president of the Professional Bowhunters Society, was the past president of Idaho Traditional Bowhunters, and was an active member of Traditional Bowhunters of Montana and Traditional Archers of Oregon. Sadly, Larry lost his courageous 14 month battle with pancreatic cancer before his first design, the Hunt'N Fisch™, made it to the market.



Bob Terzuola
Albuquerque, NM
Years Designing: 30+

Look up "tactical folding knife" in the dictionary and you're likely to see Bob's picture next to it. After all, he virtually invented the category and continues to specialize in knives for professional use. Born in New York, he had many adventures before settling into design in the early '80s. In 1981 he joined the Knifemakers' Guild and that was all she wrote. Bob has done many collaborations and CRKT® is proud to offer the BT-70™ knife this year commemorating his 70th birthday. Bob, from all of us, here's to you!



NEW
15



EVERYDAY

EVERYDAY CARRY

Believe it or not, the way people feel about their cellphone today is how many used to feel about a good knife: you just don't leave home without one. We still feel that way. So we're proud to carry on the tradition of the pocket knife, with innovative, purpose-built products you'll want to keep close at hand.



K300KXP

HOOTENANNY™

Designed by Ken Onion in Kaneohe, Hawaii

On the lake or on the town, it's ready to go. Ken Onion's latest design gives you the best of both worlds in an everyday carry folder. A classy knife with an IKBS™ ball bearing pivot system and oversized pivot, it performs well on everyday carry city streets. A drop point blade works hard on duck and catfish. In between, it cleans up well.

- IKBS™ Ball Bearing Pivot System
- Oversized Pivot Style
- Low Profile Pocket Clip

FULL SPECS ON P.31

NEW
2015



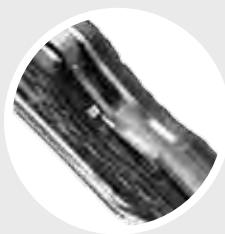
5350 & 5351

NO TIME OFF™

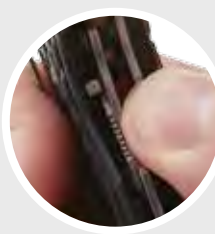
Designed by Flavio Ikoma in Presidente Prudente, Brazil

Picks fights with heavy-duty tasks and wins. Flavio Ikoma's new rugged everyday carry folder is looking for a chance to flex its strength. An IKBS™ ball bearing pivot system with opening flipper smoothly deploys a beefy modified drop point blade, in plain edge or also available with Veff Flat Top Serrations®. Then the new innovative ILS™ safety sets a pin between the frame and locking liner and you are just plain safer. Grab the heavy-duty waffle iron traction grip handle and good luck letting go.

FULL SPECS ON P.35 & 36



Flavio ingeniously added a lever with an elbow, set between liner and frame, which prevents the locking liner from slipping down the blade ramp.



When you're done using your knife, press down on the ILS™ thumb rest and slide the locking liner over to disengage the safety.



5290

TIGHE RADE™

Designed by Brian Tighe in Ridgeville, Ontario, Canada

In hand or in action, this is one to show off. Brian Tighe doesn't know how to do anything subtle. Case in point: his latest everyday carry folder with a button lock screams style. The aluminum handle features contoured, textured grooves. A compound grind blade deploys swiftly with a flipper or ambidextrous dual thumb studs. About the only thing it doesn't do well is sit idly; it's apt to go on a tirade.

- Button Lock
- Polished Aluminum Handles
- Dual Blade Grind

FULL SPECS ON P.37

NEW
2015



7030K

ARGUS™ BLACK

Designed by Matthew Lerch in Sussex, Wisconsin

Tear through tasks in a gentlemanly way. With a black aluminum handle that's oxide blasted then anodized, this Matthew Lerch-designed everyday carry folder has eye-catching style on the outside. But then it really impresses once you use our patented OutBurst® assisted opening and put the drop-point blade to work. It's as smooth to cut as those who use it.

- OutBurst® Assisted Opening
- Fire Safe® Thumb Disk Actuation
- Black Aluminum Handles

FULL SPECS ON P.42



NEW
2015

2470 & 2480

ACHI™ & AKARI™

Designed by Lucas Burnley in Albuquerque, New Mexico

Look so good and feels so great, it's hard to call it work. With an attractive cord-wrapped handle, this Lucas Burnley-designed fixed blade everyday carry series pleases the eye and hand. Meanwhile, an acid etched blade, available in an upswept or inverted style, whips through ugly tasks with precision and ease. Throughout it all, you'll be enjoying every utility minute of it.

- Ray Skin Style Cord-Wrapped Handle
- Individually Etched Ti-Nitride Blade
- Glass-Reinforced Nylon Sheath w/ Skull Bead

FULL SPECS ON P.41





2490 & 2490KS

SQUID™

Designed by Lucas Burnley in Albuquerque, New Mexico

It's a pistol of a knife: it obliterates tasks. This Lucas Burnley-designed everyday carry knife is compact in stature but packs some heat in the features department. It comes with a handle available in silver stonewash or black stonewash, a frame lock for safety, and friction grooves on the drop-point blade for a secure grip. Be careful where you point it.

FULL SPECS ON P.40 & 41

- On Blade Friction Grooves for Grip
- Low Profile Pocket Clip
- Lanyard Hole for Additional Keychain or Fob

NEW
2015



7490

NORTHCLIFFE™

Designed by Steve Jernigan in Milton, Florida

Smooth and knows how to get things done. Sound familiar? This Steve Jernigan-designed gentleman's everyday carry is slim and won't snag your pocket. But it won't stay in there for long. You'll want to show off the beautiful ebony handle to friends. That is, when you're not using the willow-shaped blade to show tasks who's boss.

FULL SPECS ON P.47

- Large, Classy, Pocket Folder
- Slim Profile w/ Exceptional Fit & Finish
- Ebony Wood Handle Insert



3700 & 3710

G.S.D.™ GET.S**T.DONE.

Designed by Liong Mah in Palm Bay, Florida

For gentlemen who aren't afraid to get their hands dirty. Liong Mah's everyday carry knife looks good with your Sunday best or putting in overtime on weekdays. The clip-point blade style works well on a variety of tasks, and the IKBS™ ball bearing pivot system opens the knife fast and easy and as smooth as you are under pressure.

- IKBS™ Ball Bearing Pivot System
- Clean Style Lines
- Low Profile Pocket Clip
- Available with Veff Flat Top Serrations*

FULL SPECS ON P.46 & 47

NEW
2015



6530 & 6531

JOURNEYER™

Designed by Liong Mah in Palm Bay, Florida

In folded or locked position, it goes the distance. Turn Liong Mah's new folding everyday carry knife into a locked blade simply by pulling out the pin tool in the back of the handle and placing it into the blade slot, or you can adjust the tension on the opener. The stonewashed blade arrives in plain edge or with available Veff Flat Top Serrations*. They'll do the rest for the years of journeys to come.

- Classic Slip Joint
- Stonewash Blade Steel
- Stored T6 Wrench to Adjust Pivot or Lock Blade
- Available with Veff Flat Top Serrations*

FULL SPECS ON P.47



These Journeyer knives have a wrench that snaps in place in the back of the handle. You can use the wrench to service your knife, tighten the pivot, or set into the blade and handle to set a lock on the slip joint.



2392

DEVIATION™

Designed by Terry Renner in Palmetto, Florida

Goes against the norm of folding knives. This Terry Lee Renner-designed futuristic looking everyday carry defies convention. The titanium nitride finished two-tone handle is uniquely angular yet surprisingly comfortable to hold. Meanwhile an IKBS™ ball bearing pivot system makes it easy to deploy the tanto tip blade anywhere. Mars, for instance.

- IKBS™ Ball Bearing Pivot System
- Dual Blade Finish – Mirror and Satin
- Distinctive, Futuristic Blade Design

FULL SPECS ON P.53

NEW
2015



5030

CLING-ON™

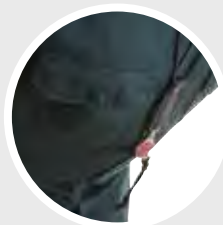
Designed by Ed Van Hoy in Abingdon, Virginia

A knife you'll keep close to your heart. Literally. The trouble with neck knives is they can hang and get caught on machinery. That's why Ed Van Hoy designed this everyday carry blade, which features a magnetic retention feature embedded in the knife handle and sheath. It stays out of sight and out of mind. Until you need the utility blade to get the job done.

FULL SPECS ON P.53



Includes magnetic knife, sheath, CRKT™ dog tag, and magnetic quick release lanyard.



Magnetic retention feature so you can lean over while working and the utility knife won't dangle in the way of your work.

'15 ^{NEW}



HUNT & FISH

HUNT & FISH

Teeth, talons, horns, hooves, spikes, scales, claws, and paws—Mother Nature has equipped her little kiddies with all kinds of ways to ruin your day. And given your mission, it's clearly in their best interest to do so. So when you're going out there to do battle, take every advantage you can get your hands on.

HOIST1

HOIST'N LOK™ BIG GAME HOIST

Designed by Russ Kommer in Fargo, North Dakota

You can locate a stud in the wall and put up your 8-pointer.

Or you can use the Russ Kommer-designed Big Game Hoist with a rope rated at 500lbs and a patented lobe on the pulley system that locks it into place. Hang your deer in a tree for all to see. Yeah, that's better.

FULL SPECS ON P.61

- Innovative, Patented, Secure, Cam Lock
- 4:1 Mechanical Pulley System
- Includes: Pulley, Gambrel, Rope



The patented cam system securely locks the load into place.



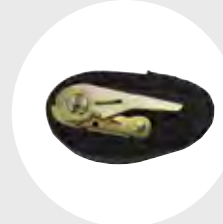
A locking four-pulley system creates a 4:1 mechanical advantage that makes hanging game easy.



NEW
2015



Angled prongs prevent shifting and slipping when the hoist is secured.



The heavy-duty nylon strap and ratchet secure the hoist around the tree.



HOIST2

HOIST'N LOK™ TREE STAND HOIST

Designed by Russ Kommer in Fargo, North Dakota

There used to be no easy way to get your tree stand up high. Then Russ Kommer put his mind to it and arrived at this innovative new hoisting system. Mount the hoist in a tree and pull up as much as 50lbs. The lobed cam activates when you move the rope to the side and locks into place. Just remember to pull your lunch up, too.

FULL SPECS ON P.61

- Innovative, Patented, Secure, Cam Lock
- Includes: Pulley, Extension Arm
- Strap, Ratchet, and Rope



2861



HUNT'N FISCH™

Designed by Larry Fischer in Boise, Idaho

Leaves less meat in the field, puts more in your freezer. This Larry Fischer-designed fixed blade hunting knife has multiple friction grooves along the spine for optimum blade control and a stylish, multi-colored G10 handle, with exceptional fit and finish. Together they serve one purpose: to get every ounce of dinner off your game. With the included high-quality sheath, you'll be ready for deer that aren't expecting you.

- Spine Friction Grooves for Blade Control
- Multi-Colored G10 Handle
- High-Quality Leather Sheath

FULL SPECS ON P.61

NEW
2015



15^{NEW}



SURVIVAL

SURVIVAL

Turning on the television these days, some might get the impression that survival is merely a hobby. You know better. You know that when you're going places where there are no paved trails, drinking fountains, or camera crews to lend a hand, your odds of making it out are only as good as the gear you carry in.



3760

SAKER™

Designed by Abe Elias in Leamington, Ontario, Canada

In the woods, it's more like what *can't* it do. Build a fire or a shelter. Hunt. Forage. If you're a Bushcrafter, this Abe Elias-designed fixed blade knife will be your go-to blade. A true scandi grind on a 1075 carbon steel blade gives you an efficient cutting tool for all tasks. Just grab hold of the walnut handle and draw it from the thick, high-quality leather sheath. The only thing stopping you from getting out there is...you.

FULL SPECS ON P.68

- Bushcraft Knife, Walnut Wood Handle
- True Scandi Grind Blade
- High-Quality Leather Sheath

Includes additional Bushcraft tool for scraping, pitch harvesting, wedge splitting, or prying.



NEW
2015



3100

MAH-CHETE™

Designed by Liong Mah in Palm Bay, Florida

A blade that's curved up to make brush go down hard. Liong Mah was looking for a survival machete he could use in a variety of situations. So he designed this smaller sized one with a distinctive upswept overall shape. A walnut handle with lanyard holes allows for a forward carry that's secure.—unlike the grass it'll encounter.

FULL SPECS ON P.68

- Walnut Wood Handle
- Upswept Handle Clearance for Extended Use
- Reinforced Nylon Sheath





These bracelets have a Quick Release feature. Locate the pull tabs and pull to unravel the paracord bracelet.

9350

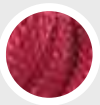
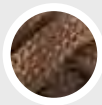
QUICK RELEASE PARACORD BRACELET

Designed by Jason Scarvalas in Hudson, New Hampshire

Goes around your wrist and saves your butt. When you're in danger, you want a solution that's convenient and simple. Enter the Jason Scarvalas-designed Quick Release Paracord Survival Bracelet. Available in black, tan and fuchsia in both large and small sizes, it lets you quickly deploy an emergency paracord for tourniquets, lashing, or anything else, all with easy-to-use pull tabs.

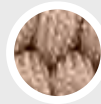
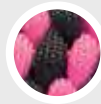
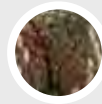
- Quick Release Feature
- Emergency Paracord
- CRKT® Medallion
- Available in Large and Small Sizes

FULL SPECS ON P.70



Available in multiple colors.

NEW
2015



Available in multiple colors.

9400

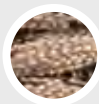
ADJUSTABLE PARACORD BRACELET

Designed by Tom Stokes in Williamsburg, Virginia

It's a one-size-fits-all solution for varying degrees of danger. Tom Stokes designed his series of adjustable paracord survival bracelets for superior lashing in small, medium and large-sized emergency situations. Available in black, camo, green, tan, pink, and black, they've got you covered no matter how big your wrist. Compatible with the other Stokes Paracord Survival Accessories like the Fire Starter, Compass, L.E.D. Light and Bottle Opener. Be prepared for an everyday anything.

- Adjustable Sizing
- Emergency Survival Paracord

FULL SPECS ON P.71



Also available in tan.

9450

BOTTLE OPENER PARACORD ACCESSORY

Designed by Tom Stokes in Williamsburg, Virginia

Helps in every emergency. A stubborn beer cap, for instance. You never know when trouble will hit. Best to be prepared with the Tom Stokes-designed paracord accessory. It features a bottle opener and three-foot length of paracord in black or tan on a non-load-bearing carabiner to clip to your pack. It will also work well with the other Stokes Paracord Survival Accessories like the Fire Starter, Compass, L.E.D. Light and Bottle Opener. Don't get caught unprepared—take it with you.

- Bottle Opener
- Emergency Paracord
- Carabiner* for Keychain or Gear Loop

*Carabiner is non-load bearing.

FULL SPECS ON P.71

NEW
2015



15^{NEW}



TACTICAL

TACTICAL

Hope for the best, prepare for the worst. It's the motto of all those who train for situations where life is in their hands. They know that when things go bad, they can go bad very quickly. And they pack accordingly.



7460

BT-70™

Designed by Bob Terzuola in Albuquerque, New Mexico

NEW
2015

70 never looked so good on duty. One of the founding fathers of tactical blades, Bob Terzuola, turned 70 this year. So he did what any famous knifemaker would do—created a blade that'll stand the test of time. It features a unique stonewash finish, blood groove, and tough G10 handle scales featuring the Terzuola dragon logo. But it simply looks best in action.

FULL SPECS ON P.76

- Bob Terzuola's 70th Birthday Commemorative Design
- Stonewash Blade Finish
- Black G10 Handle with Dragon Feature

Confidence in Hand™ from the father of folding tactical knives.



Features the Terzuola dragon logo to commemorate Bob's 70th birthday knife design.





NEW
2015

- LAWKS® Safety
- Modified Tanto Blade Designed for Maximum Penetration
- G10 Handle w/Frame Lock



2926

SHIZUKA NOH KEN™

Designed by James Williams in Encinitas, California

Proven on missions. Ready to be transported anywhere. A new compact version of the popular Otanashi noh Ken™, this folding tactical knife features the manual LAWKS® safety innovation to perform its duty at the highest level when you need it most. James Williams designed this easier-to-carry, more-concealable blade to be the perfect complement to your personal lineup of defense tools.

FULL SPECS ON P.76



2930

YUKANTO™

Designed by James Williams in Encinitas, California

It's fixed on protecting freedom. This tactical fixed blade is built much like its designer James Williams—tough. A beefy G10 handle provides superior grip in close quarter battle environments. The modified tanto blade allows for maximum penetration and slashing cuts against enemies. Finally, a sheath with a molle-compatible gear clip puts your knife at-the-ready for any surprises that may come your way.

- Modified Tanto Blade Designed for Maximum Penetration
- G10 Handle with Textured Grip
- Glass-Reinforced Nylon Sheath with Molle Compatible J-Hook Clip

FULL SPECS ON P.76



2031

DRUMFIRE™

Designed by Pat and Wes Crawford in West Memphis, Arkansas

Compact. Powerful going through tasks. Like dynamite. Don't let its size fool you. This Crawford-designed tactical knife with a tanto blade is ready for burly duties. Just draw it from the sturdy sheath in a snap and feel its lightweight construction thanks to holes in the frame. Your heavy-duty on-mission tasks have been warned.

- Lightweight Fixed Blade Neck Knife
- Quick Release Lanyard
- Gear Compatible Sheath w/J-Hook Clip

FULL SPECS ON P.82

NEW
2015



2032

THUNDER STRIKE™

Designed by Pat and Wes Crawford in West Memphis, Arkansas

This knife won't leave you hanging in the field. When enemies are breathing down your neck this Crawford-designed tactical knife has you covered. A versatile, molle-compatible sheath lets you draw the black, corrosion-resistant coated spear point blade fast. A handle wrapped with survival paracord gives you help in hand. The quick release on the lanyard will prevent you from getting wrapped up. With this knife, protection won't go M.I.A.

- Black Corrosion Resistant Blade Coating
- Cord-Wrapped Handle
- Gear Compatible Sheath w/J-Hook Clip

FULL SPECS ON P.82

NEW**HOOTENANNY™**

Designed by Ken Onion in Kaneohe, Hawaii



- IKBS™ Ball Bearing Pivot System
- Oversized Pivot Style
- Low Profile Pocket Clip

K300KXP

Blade: Length: 3.340" (84.8 mm)
 Edge: Plain
 Steel: 8Cr13MoV, 58-60 HRC
 Finish: Satin
 Thickness: 0.130" (3.3 mm)
 Closed: 4.590" (116.6 mm)
 Open: 7.940" (201.6 mm)
 Weight: 4.8 oz. (136.0 g)
 Handle: Stainless Steel w/Carbon Fiber Overlay
 Style: Folding Knife w/Frame Lock

EROS™

Designed by Ken Onion in Kaneohe, Hawaii



- IKBS™ Ball Bearing Pivot System
- Blade Show Award - Imported Knife of the Year
- Lightweight Titanium Handles

K455TXP

Blade: Length: 3.000" (76.2 mm)
 Edge: Plain
 Steel: Acuto 440, 59-60 HRC
 Finish: Satin
 Thickness: 0.079" (2.0 mm)
 Closed: 4.000" (102.0 mm)
 Open: 7.000" (178.0 mm)
 Weight: 1.4 oz. (39.7 g)
 Handle: 6AL4V Titanium
 Style: Folding Knife w/Frame Lock

EROS™ FLAT HANDLE COMPACT

Designed by Ken Onion in Kaneohe, Hawaii



- IKBS™ Ball Bearing Pivot System
- Flipper Opening
- Stainless Steel Handles

K451XXP

Blade: Length: 2.030" (51.6 mm)
 Edge: Plain
 Steel: AUS 8, 57-58 HRC
 Finish: Satin
 Thickness: 0.090" (2.3 mm)
 Closed: 2.940" (74.6 mm)
 Open: 4.960" (125.9 mm)
 Weight: 1.5 oz. (42.5 g)
 Handle: 420J2 Stainless Steel
 Style: Folding Knife w/Frame Lock

EROS™ FLAT HANDLE LARGE

Designed by Ken Onion in Kaneohe, Hawaii



- IKBS™ Ball Bearing Pivot System
- Flipper Opening
- Stainless Steel Handles

K456XXP

Blade: Length: 2.840" (72.1 mm)
 Edge: Plain
 Steel: AUS 8, 57-58 HRC
 Finish: Satin
 Thickness: 0.100" (2.5 mm)
 Closed: 4.060" (103.1 mm)
 Open: 6.940" (176.2 mm)
 Weight: 3.0 oz. (85.0 g)
 Handle: 420J2 Stainless Steel
 Style: Folding Knife w/Frame Lock

Available in Clam Pack as K456XXPC

SWINDLE™ FLAT HANDLE

Designed by Ken Onion in Kaneohe, Hawaii



- IKBS™ Ball Bearing Pivot System
- Blade Show Award - Most Innovative Import Design
- Tensioned Pocket Clip

K240XXP

Blade: Length: 3.200" (81.2 mm)
 Edge: Plain
 Steel: 8Cr14MoV, 58-59 HRC
 Finish: Satin
 Thickness: 0.120" (3.0 mm)
 Closed: 4.250" (107.9 mm)
 Open: 7.500" (190.5 mm)
 Weight: 3.3 oz. (93.6 g)
 Handle: Stainless Steel
 Style: Folding Knife w/Frame Lock

SWINDLE™ GROOVED HANDLE

Designed by Ken Onion in Kaneohe, Hawaii



- IKBS™ Ball Bearing Pivot System
- Blade Show Award - Most Innovative Import Design
- Tensioned Pocket Clip

K241XXP

Blade: Length: 3.200" (81.2 mm)
 Edge: Plain
 Steel: 12C27 Sandvik, 59-61 HRC
 Finish: Satin
 Thickness: 0.120" (3.0 mm)
 Closed: 4.250" (107.9 mm)
 Open: 7.500" (190.5 mm)
 Weight: 3.3 oz. (93.6 g)
 Handle: Stainless Steel
 Style: Folding Knife w/Frame Lock

RIPPLE™ 2 ALUMINUM

Designed by Ken Onion in Kaneohe, Hawaii



- IKBS™ Ball Bearing Pivot System
- Flipper Opening
- Aluminum Handles

K410KXP

Blade: Length: 2.700" (65.5 mm)
 Edge: Plain
 Steel: 8Cr14MoV, 58-59 HRC
 Finish: Satin
 Thickness: 0.100" (2.5 mm)
 Closed: 3.750" (95.25 mm)
 Open: 6.500" (165.1 mm)
 Weight: 1.8 oz. (51.0 g)
 Handle: 6061 Aluminum
 Style: Folding Knife w/Locking Liner

U.S. Patents Pending

RIPPLE™ ALUMINUM

Designed by Ken Onion in Kaneohe, Hawaii



- IKBS™ Ball Bearing Pivot System
- Flipper Opening
- Aluminum Handles

K415KXP

Blade: Length: 3.125" (79.3 mm)
 Edge: Plain
 Steel: 8Cr14MoV, 58-59 HRC
 Finish: Satin
 Thickness: 0.100" (2.5 mm)
 Closed: 4.330" (109.9 mm)
 Open: 7.500" (190.5 mm)
 Weight: 2.5 oz. (70.9 g)
 Handle: 6061 Aluminum
 Style: Folding Knife w/Locking Liner

U.S. Patents Pending
 Available in Clam Pack as K415KXPC

RIPPLE™ 2 STAINLESS BRONZE

Designed by Ken Onion in Kaneohe, Hawaii



- IKBS™ Ball Bearing Pivot System
- Flipper Opening
- Stainless Steel Handles

K401BXP

Blade: Length: 2.780" (70.6 mm)
Edge: Plain
Steel: Acuto 440, 57-58 HRC
Finish: Satin
Thickness: 0.100" (2.5 mm)
Closed: 3.760" (95.5 mm)
Open: 5.560" (141.2 mm)
Weight: 2.3 oz. (65.2 g)
Handle: Bronze Titanium Nitride Coated
Stainless Steel
Style: Folding Knife w/Frame Lock

RIPPLE™ STAINLESS BRONZE

Designed by Ken Onion in Kaneohe, Hawaii



- IKBS™ Ball Bearing Pivot System
- Flipper Opening
- Stainless Steel Handles

K406BXP

Blade: Length: 3.160" (80.2 mm)
Edge: Plain
Steel: Acuto 440, 57-58 HRC
Finish: Satin
Thickness: 0.100" (2.5 mm)
Closed: 4.330" (109.9 mm)
Open: 6.380" (162.1 mm)
Weight: 3.1 oz. (87.9 g)
Handle: Bronze Titanium Nitride Coated
Stainless Steel
Style: Folding Knife w/Frame Lock

RIPPLE™ STAINLESS BRONZE WITH VEFF FLAT TOP SERRATIONS®

Designed by Ken Onion in Kaneohe, Hawaii



- IKBS™ Ball Bearing Pivot System
- Flipper Opening
- Veff Flat Top Serrations®

K406BXS

Blade: Length: 3.160" (80.2 mm)
Edge: Combination
Steel: Acuto 440, 57-58 HRC
Finish: Satin
Thickness: 0.100" (2.5 mm)
Closed: 4.330" (109.9 mm)
Open: 6.380" (162.1 mm)
Weight: 3.1 oz. (87.9 g)
Handle: Bronze Titanium Nitride Coated
Stainless Steel
Style: Folding Knife w/Frame Lock

RIPPLE™ 2 STAINLESS GREY

Designed by Ken Onion in Kaneohe, Hawaii



- IKBS™ Ball Bearing Pivot System
- Flipper Opening
- Stainless Steel Handles

K401GXP

Blade: Length: 2.780" (70.6 mm)
Edge: Plain
Steel: Acuto 440, 57-58 HRC
Finish: Satin
Thickness: 0.100" (2.5 mm)
Closed: 3.760" (95.5 mm)
Open: 5.560" (141.2 mm)
Weight: 2.3 oz. (65.2 g)
Handle: Grey Titanium Nitride Coated
Stainless Steel
Style: Folding Knife w/Frame Lock

RIPPLE™ STAINLESS GREY

Designed by Ken Onion in Kaneohe, Hawaii



- IKBS™ Ball Bearing Pivot System
- Flipper Opening
- Stainless Steel Handles

K406GXP

Blade: Length: 3.160" (80.2 mm)
Edge: Plain
Steel: Acuto 440, 57-58 HRC
Finish: Satin
Thickness: 0.100" (2.5 mm)
Closed: 4.330" (109.9 mm)
Open: 6.380" (162.1 mm)
Weight: 3.1 oz. (87.9 g)
Handle: Grey Titanium Nitride Coated
Stainless Steel
Style: Folding Knife w/Frame Lock

RIPPLE™ STAINLESS GREY WITH VEFF FLAT TOP SERRATIONS®

Designed by Ken Onion in Kaneohe, Hawaii



- IKBS™ Ball Bearing Pivot System
- Flipper Opening
- Veff Flat Top Serrations®

K406GXS

Blade: Length: 3.160" (80.2 mm)
Edge: Combination
Steel: Acuto 440, 57-58 HRC
Finish: Satin
Thickness: 0.100" (2.5 mm)
Closed: 4.330" (109.9 mm)
Open: 6.380" (162.1 mm)
Weight: 3.1 oz. (87.9 g)
Handle: Grey Titanium Nitride Coated
Stainless Steel
Style: Folding Knife w/Frame Lock

SHENANIGAN™ Z

Designed by Ken Onion in Kaneohe, Hawaii



- Bead Blast Blade Finish
- Flipper Opening
- Glass-Reinforced Nylon Handles

K480KKP

Blade: Length: 3.250" (82.5 mm)
Edge: Plain
Steel: AUS 8, 58-59 HRC
Finish: Bead Blast
Thickness: 0.119" (3.0 mm)
Closed: 4.875" (123.8 mm)
Open: 8.250" (290.5 mm)
Weight: 4.1 oz. (116.0 g)
Handle: Glass-Reinforced Nylon
Style: Folding Knife w/Locking Liner

Available in Clam Pack as K480KKPC

SHENANIGAN™ Z WITH TRIPLE POINT™ SERRATIONS

Designed by Ken Onion in Kaneohe, Hawaii



- Bead Blast Blade Finish
- Glass-Reinforced Nylon Handles
- Triple Point™ Serrations

K480KKS

Blade: Length: 3.250" (82.5 mm)
Edge: Combination
Steel: AUS 8, 58-59 HRC
Finish: Bead Blast
Thickness: 0.119" (3.0 mm)
Closed: 4.875" (123.8 mm)
Open: 8.250" (290.5 mm)
Weight: 4.1 oz. (116.0 g)
Handle: Glass-Reinforced Nylon
Style: Folding Knife w/Locking Liner

Available in Clam Pack as K480KKSC

SHENANIGAN™ T WITH TRIPLE POINT™ SERRATIONS

Designed by Ken Onion in Kaneohe, Hawaii



- Black Titanium Nitride Blade Finish
- Glass-Reinforced Nylon Handles
- Triple Point™ Serrations

K495KKS

Blade: Length: 3.250" (82.5 mm)
Edge: Combination
Steel: AUS 8, 58-59 HRC
Finish: Black Titanium Nitride
Thickness: 0.119" (3.0 mm)
Closed: 4.875" (123.8 mm)
Open: 8.250" (290.5 mm)
Weight: 3.8 oz. (108.0 g)
Handle: Glass-Reinforced Nylon
Style: Folding Knife w/Locking Liner

SHENANIGAN™ Z CAMO REALTREE® XTRA®

Designed by Ken Onion in Kaneohe, Hawaii



- Bead Blast Blade Finish
- Glass-Reinforced Nylon Handles
- Realtree Xtra® Camo Pattern

K480CXP

Blade: Length: 3.250" (82.5 mm)
Edge: Plain
Steel: AUS 8, 58-59 HRC
Finish: Bead Blast
Thickness: 0.119" (3.0 mm)
Closed: 4.875" (123.8 mm)
Open: 8.250" (290.5 mm)
Weight: 3.7 oz. (105.0 g)
Handle: Glass-Reinforced Nylon w/Realtree® Xtra®
Style: Folding Knife w/Locking Liner

Realtree Xtra® Jordan Outdoor Enterprises, Ltd.
Available in Clam Pack as K480CXPC

SHENANIGAN™ Z CAMO REALTREE® XTRA® GREEN

Designed by Ken Onion in Kaneohe, Hawaii



- Bead Blast Blade Finish
- Glass-Reinforced Nylon Handles
- Realtree Xtra® Green Camo Pattern

K481CXP

Blade: Length: 3.250" (82.5 mm)
Edge: Plain
Steel: AUS 8, 58-59 HRC
Finish: Bead Blast
Thickness: 0.119" (3.0 mm)
Closed: 4.875" (123.8 mm)
Open: 8.250" (290.5 mm)
Weight: 3.7 oz. (105.0 g)
Handle: Glass-Reinforced Nylon w/Realtree® Xtra® Green
Style: Folding Knife w/Locking Liner

Realtree Xtra® Green Jordan Outdoor Enterprises, Ltd.
Available in Clam Pack as K481CXPC

NEW**NO TIME OFF™**

Designed by Flavio Ikoma in Presidente Prudente, Brazil

**5350**

Blade: Length: 2.990" (75.9 mm)
Edge: Plain
Steel: BD1, 57-59 HRC
Finish: Satin
Thickness: 0.150" (3.8 mm)
Closed: 4.280" (108.7 mm)
Open: 7.250" (184.1 mm)
Weight: 5.9 oz. (167.0 g)
Handle: Glass-Reinforced Nylon
Style: Folding Knife w/Locking Liner

U.S. Patent Pending

- IKBS™ Ball Bearing Pivot System
- ILS™ Safety System
- Heavy Duty Traction Grip

NEW**NO TIME OFF™ WITH VEFF FLAT TOP SERRATIONS®**
Designed by Flavio Ikoma in Presidente Prudente, Brazil**5351**

Blade:

Length: 2.990" (75.9 mm)

Edge: Combination

Steel: BD1, 57-59 HRC

Finish: Satin

Thickness: 0.150" (3.8 mm)

Closed:

4.280" (108.7 mm)

Open:

7.250" (184.1 mm)

Weight:

5.9 oz. (167.0 g)

Handle:

Glass-Reinforced Nylon

Style:

Folding Knife w/Locking Liner

U.S. Patent Pending

- IKBS™ Ball Bearing Pivot System
- ILS™ Safety
- Veff Flat Top Serrations®

NEW**FOSSIL™ COMPACT WITH VEFF SERRATIONS™**

Designed by Flavio Ikoma in Presidente Prudente, Brazil

**5461K**

Blade:

Length: 3.410" (86.6 mm)

Edge: Combination

Steel: 8Cr13MoV, 58-60 HRC

Finish: Gray Titanium Nitride

Thickness: 0.110" (2.8 mm)

Closed:

4.310" (109.4 mm)

Open:

7.690" (195.3 mm)

Weight:

4.1 oz. (116.0 g)

Handle:

Stainless Steel w/G10 Overlay

Style:

Folding Knife w/Frame Lock

U.S. Patent No. D559,939

- IKBS™ Ball Bearing Pivot System
- G10 Handle Overlays
- Veff Serrations™

FOSSIL™ WITH VEFF SERRATIONS™

Designed by Flavio Ikoma in Presidente Prudente, Brazil

**5471K**

Blade:

Length: 3.960" (100.5 mm)

Edge: Combination

Steel: 8Cr13MoV, 58-60 HRC

Finish: Titanium Nitride

Thickness: 0.150" (3.8 mm)

Closed:

4.950" (125.7 mm)

Open:

8.880" (225.5 mm)

Weight:

6.1 oz. (173.0 g)

Handle:

Stainless Steel w/G10 Overlay

Style:

Folding Knife w/Frame Lock

U.S. Patent No. D559,939

- IKBS™ Ball Bearing Pivot System
- G10 Handle Overlays
- Veff Serrations™

FOSSIL™ COMPACT

Designed by Flavio Ikoma in Presidente Prudente, Brazil

**5460**

Blade:

Length: 3.410" (86.6 mm)

Edge: Plain

Steel: 8Cr13MoV, 58-60 HRC

Finish: Satin

Thickness: 0.110" (2.8 mm)

Closed:

4.310" (109.4 mm)

Open:

7.690" (195.3 mm)

Weight:

4.1 oz. (116.0 g)

Handle:

Stainless Steel w/G10 Overlay

Style:

Folding Knife w/Frame Lock

Available in Clam Pack as 5460C

- IKBS™ Ball Bearing Pivot System
- G10 Handle Overlays
- Satin Blade Finish

FOSSIL™

Designed by Flavio Ikoma in Presidente Prudente, Brazil



- IKBS™ Ball Bearing Pivot System
- G10 Handle Overlays
- Satin Blade Finish

5470

Blade: Length: 3.960" (100.5 mm)
Edge: Plain
Steel: 8Cr13MoV, 58-60 HRC
Finish: Satin
Thickness: 0.150" (3.8 mm)
Closed: 4.950" (125.7 mm)
Open: 8.880" (225.5 mm)
Weight: 6.1 oz. (173.0 g)
Handle: Stainless Steel w/G10 Overlay
Style: Folding Knife w/Frame Lock

NEW**TIGHE RADE™**

Designed by Brian Tighe in Ridgeville, Ontario, Canada



- Button Lock
- Polished Aluminum Handles
- Dual Blade Grind

5290

Blade: Length: 3.380" (85.8 mm)
Edge: Plain
Steel: 8Cr13MoV, 58-60 HRC
Finish: Satin
Thickness: 0.120" (3.0 mm)
Closed: 4.530" (115.1 mm)
Open: 7.880" (200.1 mm)
Weight: 4.5 oz. (128.0 g)
Handle: 6061 T6 Aluminum
Style: Folding Knife w/Button Lock

NIRK™ TIGHE 2

Designed by Brian Tighe in Ridgeville, Ontario, Canada



- Innovative, Patented, Handle Integrated, Kleecker Lock
- Blue Two Tone Titanium Nitride Buffed Handle
- Satin Polished

5240

Blade: Length: 3.250" (89.4 mm)
Edge: Plain
Steel: AUS 8, 58-59 HRC
Finish: Satin
Thickness: 0.121" (3.0 mm)
Closed: 4.250" (107.9 mm)
Open: 7.375" (187.3 mm)
Weight: 3.3 oz. (93.6 g)
Handle: 420J2 Stainless Steel
Style: Folding Knife w/Kleecker Lock

U.S. Patent No. 8,443,521

NIRK™ TIGHE

Designed by Brian Tighe in Ridgeville, Ontario, Canada

**5250**

Blade: Length: 3.875" (98.4 mm)
Edge: Plain
Steel: AUS 8, 58-59 HRC
Finish: Satin
Thickness: 0.121" (3.0 mm)
Closed: 5.250" (133.3 mm)
Open: 9.125" (231.8 mm)
Weight: 5.1 oz. (145.0 g)
Handle: 420J2 Stainless Steel
Style: Folding Knife w/Kleecker Lock

U.S. Patent No. 8,443,521

- Innovative, Patented, Handle Integrated, Kleecker Lock
- Blue Two Tone Titanium Nitride Buffed Handle
- Blade Show Award - Most Innovative Custom Design

TIGHE ROD™

Designed by Brian Tighe in Ridgeville, Ontario, Canada



- Innovative, Patented, Handle Integrated, Klecker Lock
- Blue Two-Tone Titanium Nitride Buffed Handle
- Satin Polished

5265

Blade:

Length: 3.570" (90.7 mm)

Edge: Plain

Steel: AUS 8, 58-59 HRC

Finish: Satin

Thickness: 0.120" (3.0 mm)

Closed:

4.640" (117.9 mm)

Open:

8.190" (208.0 mm)

Weight:

4.8 oz. (136.0 g)

Handle:

420J2 Stainless Steel

Style:

Folding Knife w/Klecker Lock

U.S. Patent No. 8,443,521

TIGHECOON™

Designed by Brian Tighe in Ridgeville, Ontario, Canada



- Button Lock
- Aluminum Handles with Stylish Grip Insert
- Ambidextrous Thumb Stud Opening

5270

Blade:

Length: 3.220" (81.8 mm)

Edge: Plain

Steel: AUS 8, 58-59 HRC

Finish: Satin

Thickness: 0.130" (3.0 mm)

Closed:

4.140" (105.2 mm)

Open:

7.375" (187.3 mm)

Weight:

3.5 oz. (99.2 g)

Handle:

Aluminum

Style:

Folding Knife w/Button Lock

TIGHECOON™ BELT BUCKLE

Designed by Brian Tighe in Ridgeville, Ontario, Canada



- 6061 T6 Aircraft Grade Aluminum
- Pair with model 5270 for Maximum Style Statement
- Also Available: 5270SET

5270BELT

Length:

3.510" (89.2 mm)

Width:

2.050" (52.1 mm)

Weight:

1.2 oz. (34.0 g)

Material:

6061 T6 Aluminum

TIGHECOON™ MONEY CLIP

Designed by Brian Tighe in Ridgeville, Ontario, Canada



- 6061 T6 Aircraft Grade Aluminum
- Pair with model 5270 for Maximum Style Statement
- Also Available: 5270SET

5270MC

Length:

2.240" (56.9 mm)

Width:

1.240" (31.5 mm)

Weight:

0.7 oz. (19.8 g)

Material:

6061 T6 Aluminum

TIGHE DYE™

Designed by Brian Tighe in Ridgeville, Ontario, Canada



- Button Lock
- Stylish Aluminum Handles
- Single Side Sharp

5280

Blade: Length: 3.890" (98.8 mm)
Edge: Single Side Plain
Steel: AUS 8, 58-59 HRC
Finish: Satin
Thickness: 0.130" (3.0 mm)
Closed: 4.850" (123.2 mm)
Open: 8.750" (222.3 mm)
Weight: 5.1 oz. (145.0 g)
Handle: Aluminum
Style: Folding Knife w/Button Lock

TIGHE DYE™ BELT BUCKLE

Designed by Brian Tighe in Ridgeville, Ontario, Canada



- 6061 T6 Aircraft Grade Aluminum
- Pair with model 5280 for Maximum Style Statement
- Also Available: 5280SET

5280BELT

Length: 3.510" (89.2 mm)
Width: 2.050" (52.1 mm)
Weight: 1.1 oz. (31.2 g)
Material: 6061 T6 Aluminum

TIGHE DYE™ MONEY CLIP

Designed by Brian Tighe in Ridgeville, Ontario, Canada



- 6061 T6 Aircraft Grade Aluminum
- Pair with model 5280 for Maximum Style Statement
- Also Available: 5280SET

5280MC

Length: 2.240" (56.9 mm)
Width: 1.240" (31.5 mm)
Weight: 0.6 oz. (17.0 g)
Material: 6061 T6 Aluminum

MINI MY TIGHE™ BLACK WITH VEFF SERRATIONS™

Designed by Brian Tighe in Ridgeville, Ontario, Canada



- OutBurst® Assisted Opening
- Black Titanium Nitride Blade Finish
- Veff Serrations™

1093K

Blade: Length: 3.000" (76.2 mm)
Edge: Combination
Steel: 1.4116, 55-57 HRC
Finish: Black Titanium Nitride
Thickness: 0.120" (3.0 mm)
Closed: 3.730" (94.7 mm)
Open: 6.500" (165.1 mm)
Weight: 3.8 oz. (108.0 g)
Handle: 420J2 Steel w/Glass-Reinforced Nylon
Style: Folding Knife w/Frame Lock

U.S. Patent No. D559,939
Available in Clam Packs as 1093KC

MY TIGHE™ BLACK WITH VEFF SERRATIONS™

Designed by Brian Tighe in Ridgeville, Ontario, Canada



- OutBurst™ Assisted Opening
- Black Titanium Nitride Blade Finish
- Veff Serrations™

1091K

Blade: Length: 3.625" (92.1 mm)
 Edge: Combination
 Steel: 1.4116, 55-57 HRC
 Finish: Black Titanium Nitride
 Thickness: 0.124" (3.1 mm)
 Closed: 4.500" (114.3 mm)
 Open: 8.125" (206.3 mm)
 Weight: 5.6 oz. (159.0 g)
 Handle: 420J2 Steel w/Glass-Reinforced Nylon
 Style: Folding Knife w/Frame Lock

U.S. Patent No. D559,939

GRAPHITE™

Designed by Glenn Klecker in Silverton, Oregon



- Innovative, Patented, Handle Integrated, Klecker Lock
- Satin Finish
- Two Tone Brushed Stainless Steel Handle w/ G10

5190

Blade: Length: 3.060" (77.7 mm)
 Edge: Plain
 Steel: 8Cr13MoV, 58-60 HRC
 Finish: Satin
 Thickness: 0.121" (3.0 mm)
 Closed: 4.440" (112.7 mm)
 Open: 7.500" (190.5 mm)
 Weight: 4.4 oz. (125.0 g)
 Handle: Stainless Steel w/ G10
 Style: Folding Knife w/Klecker Lock

U.S. Patent No. 8,443,521

GRAPHITE™ WITH VEFF FLAT TOP SERRATIONS®

Designed by Glenn Klecker in Silverton, Oregon



- Innovative, Patented, Handle Integrated, Klecker Lock
- Satin Finish
- Veff Flat Top Serrations®

5195

Blade: Length: 3.060" (77.7 mm)
 Edge: Combination
 Steel: 8Cr13MoV, 58-60 HRC
 Finish: Satin
 Thickness: 0.121" (3.0 mm)
 Closed: 4.440" (112.7 mm)
 Open: 7.500" (190.5 mm)
 Weight: 4.4 oz. (125.0 g)
 Handle: Stainless Steel w/ G10
 Style: Folding Knife w/Klecker Lock

U.S. Patent No. 8,443,521

Available in Clam Pack as 5195C

NEW**SQUID™**

Designed by Lucas Burnley in Albuquerque, New Mexico



- On Blade Friction Grooves for Grip
- Low Profile Pocket Clip
- Lanyard Hole for Additional Keychain or Fob

2490

Blade: Length: 2.140" (54.0 mm)
 Edge: Plain
 Steel: 8Cr13MoV, 58-60 HRC
 Finish: Silver Stonewash
 Thickness: 0.110" (2.7 mm)
 Closed: 4.490" (114.05 mm)
 Open: 5.710" (145.0 mm)
 Weight: 3.4 oz. (96.0 g)
 Handle: Stainless Steel w/Stonewash
 Style: Folding Knife w/Frame Lock

NEW**SQUID™ BLACK STONEWASH**

Designed by Lucas Burnley in Albuquerque, New Mexico



- Black Stonewash Finish
- On Blade Friction Grooves for Grip
- Low Profile Pocket Clip

2490KS

Blade: Length: 2.140" (54.0 mm)
Edge: Plain
Steel: 8Cr13MoV, 58-60 HRC
Finish: Black Stonewash
Thickness: 0.110" (2.7 mm)
Closed: 4.490" (114.05 mm)
Open: 5.710" (145.0 mm)
Weight: 3.4 oz. (96.0 g)
Handle: Stainless Steel w/Stonewash
Style: Folding Knife w/Frame Lock

NEW**ACHI™**

Designed by Lucas Burnley in Albuquerque, New Mexico



- Ray Skin Style Cord-Wrapped Handle
- Individually Etched Ti-Nitride Blade
- Glass-Reinforced Nylon Sheath w/Skull Bead

2470

Blade: Length: 2.830" (71.8 mm)
Edge: Plain
Steel: 8Cr13MoV, 56-58 HRC
Finish: Gray Titanium Nitride w/Etch Pattern
Thickness: 0.140" (3.5 mm)
Overall: 6.250" (158.7 mm)
Weight: 2.8 oz. (79.4 g)
Handle: Cord-Wrapped Handle
Style: Fixed Blade Knife w/Sheath
Sheath: Material: Glass-Reinforced Nylon
Lanyard: Black Paracord w/ skull bead
Weight: 1.3 oz. (36.9 g)

NEW**AKARI™**

Designed by Lucas Burnley in Albuquerque, New Mexico



- Ray Skin Style Cord-Wrapped Handle
- Individually Etched Ti-Nitride Blade
- Glass-Reinforced Nylon Sheath w/Skull Bead

2480

Blade: Length: 2.830" (71.8 mm)
Edge: Plain
Steel: 8Cr13MoV, 56-58 HRC
Finish: Gray Titanium Nitride w/Etch Pattern
Thickness: 0.140" (3.5 mm)
Overall: 6.380" (162.0 mm)
Weight: 2.6 oz. (73.7 g)
Handle: Cord-Wrapped Handle
Style: Fixed Blade Knife w/Sheath
Sheath: Material: Glass-Reinforced Nylon
Lanyard: Black Paracord w/ skull bead
Weight: 1.3 oz. (36.9 g)

OBAKE™

Designed by Lucas Burnley in Albuquerque, New Mexico



- Ray Skin Style Cord-Wrapped Handle
- Individually Etched Ti-Nitride Blade
- Glass-Reinforced Nylon Sheath w/Skull Bead

2367

Blade: Length: 3.640" (92.5 mm)
Edge: Plain
Steel: 8Cr14MoV, 58-59 HRC
Finish: Gray Titanium Nitride w/ Etch Pattern
Thickness: 0.130" (3.3 mm)
Overall: 7.630" (193.8 mm)
Weight: 2.4 oz. (68 g)
Handle: Cord-Wrapped Handle
Style: Fixed Blade Knife w/Sheath
Sheath: Material: Glass-Reinforced Nylon
Lanyard: Black Paracord w/Skull Bead
Weight: 0.8 oz. (22.7 g)

Available in Clam Pack as 2367C

ARGUS™

Designed by Matthew Lerch in Sussex, Wisconsin



- OutBurst® Assisted Opening
- Fire Safe® Thumb Disk Actuation
- Cold Forged Aluminum Handles

7030

Blade: Length: 3.550" (90.2 mm)
 Edge: Plain
 Steel: AUS 8, 57-58 HRC
 Finish: Satin
 Thickness: 0.120" (3.0 mm)
 Closed: 4.560" (115.8 mm)
 Open: 8.130" (206.5 mm)
 Weight: 4.2 oz. (119.0 g)
 Handle: 6061 Aluminum
 Style: Folding Knife w/Locking Liner

U.S. Patent No. 7,918,028

NEW**ARGUS™ BLACK**

Designed by Matthew Lerch in Sussex, Wisconsin



- OutBurst® Assisted Opening
- Fire Safe® Thumb Disk Actuation
- Black Aluminum Handles

7030K

Blade: Length: 3.550" (90.2 mm)
 Edge: Plain
 Steel: AUS 8, 57-58 HRC
 Finish: Black Corrosion Resistant Coating
 Thickness: 0.120" (3.0 mm)
 Closed: 4.560" (115.8 mm)
 Open: 8.130" (206.5 mm)
 Weight: 4.2 oz. (119.0 g)
 Handle: Black 6061 Aluminum
 Style: Folding Knife w/Locking Liner

U.S. Patent No. 7,918,028

COBIA™

Designed by Matthew Lerch in Sussex, Wisconsin



- OutBurst® Assisted Opening
- Diagonal Cut Thumb Stud Deployment
- Stainless Steel Handles

7040

Blade: Length: 2.940" (74.6 mm)
 Edge: Plain
 Steel: 1.4116, 55-57 HRC
 Finish: Satin
 Thickness: 0.100" (2.5 mm)
 Closed: 3.660" (92.9 mm)
 Open: 6.560" (166.6 mm)
 Weight: 2.5 oz. (70.9 g)
 Handle: 420J2 Stainless Steel
 Style: Folding Knife w/Frame Lock

MOXIE™ BLACK

Designed by Matthew Lerch in Sussex, Wisconsin



- OutBurst® Assisted Opening
- Fire Safe® Thumb Stud Actuation
- Black Corrosion Resistant Blade Finish

1100

Blade: Length: 3.290" (83.5 mm)
 Edge: Plain
 Steel: 8Cr14MoV, 58-59 HRC
 Finish: Black Oxide
 Thickness: 0.100" (2.5 mm)
 Closed: 4.230" (107.4 mm)
 Open: 7.500" (190.5 mm)
 Weight: 3.2 oz. (90.7 g)
 Handle: EDM Finish – PP; Textured TPE
 Style: Folding Knife w/Locking Liner

U.S. Patent No. 7,918,028
 Available in Clam Pack as 1100C

MOXIE™ GREEN

Designed by Matthew Lerch in Sussex, Wisconsin



- OutBurst® Assisted Opening
- Fire Safe® Thumb Stud Actuation
- Black Corrosion Resistant Blade Finish

1101

Blade: Length: 3.290" (83.5 mm)
Edge: Plain
Steel: 8Cr14MoV, 58-59 HRC
Finish: Black Oxide
Thickness: 0.100" (2.5 mm)
Closed: 4.230" (107.4 mm)
Open: 7.500" (190.5 mm)
Weight: 3.2 oz. (90.7 g)
Handle: EDM Finish – PP; Textured TPE
Style: Folding Knife w/Locking Liner

U.S. Patent No. 7,918,028
Available in Clam Pack as 1101C

MOXIE™ GREY

Designed by Matthew Lerch in Sussex, Wisconsin



- OutBurst® Assisted Opening
- Fire Safe® Thumb Stud Actuation
- Dark Grey Corrosion Resistant Blade Finish

1102

Blade: Length: 3.290" (83.5 mm)
Edge: Plain
Steel: 8Cr14MoV, 58-59 HRC
Finish: Gray Titanium Nitride
Thickness: 0.100" (2.5 mm)
Closed: 4.230" (107.4 mm)
Open: 7.500" (190.5 mm)
Weight: 3.2 oz. (90.7 g)
Handle: EDM Finish – PP; Textured TPE
Style: Folding Knife w/Locking Liner

U.S. Patent No. 7,918,028

ENDORSER™

Designed by Matthew Lerch in Sussex, Wisconsin



- OutBurst® Assisted Opening
- Fire Safe® Thumb Stud Actuation
- Two Tone G10 Handles

1105

Blade: Length: 3.180" (80.7 mm)
Edge: Plain
Steel: 8Cr14MoV, 58-59 HRC
Finish: Satin
Thickness: 0.100" (2.5 mm)
Closed: 4.170" (105.9 mm)
Open: 7.310" (185.6 mm)
Weight: 3.2 oz. (90.7 g)
Handle: G10
Style: Folding Knife w/Locking Liner

U.S. Patent No. 7,918,028

ENDORSER™ BLACK

Designed by Matthew Lerch in Sussex, Wisconsin



- OutBurst® Assisted Opening
- Fire Safe® Thumb Stud Actuation
- Black Corrosion Resistant Blade Finish

1105K

Blade: Length: 3.180" (80.7 mm)
Edge: Plain
Steel: 8Cr14MoV, 58-59 HRC
Finish: Black Oxide
Thickness: 0.100" (2.5 mm)
Closed: 4.170" (105.9 mm)
Open: 7.310" (185.6 mm)
Weight: 3.2 oz. (90.7 g)
Handle: G10
Style: Folding Knife w/Locking Liner

U.S. Patent No. 7,918,028
Available in Clam Pack as 1105KC

ENTICER™

Designed by MJ Lerch in Sussex, Wisconsin



- OutBurst® Assisted Opening
- Fire Safe® Thumb Disk Actuation
- Glass-Reinforced Nylon Handles

1060

Blade: Length: 3.240" (82.3 mm)
Edge: Plain
Steel: 1.4034, 56-58 HRC
Finish: Satin
Thickness: 0.090" (2.2 mm)
Closed: 3.930" (99.8 mm)
Open: 7.190" (182.6 mm)
Weight: 2.0 oz. (56.7 g)
Handle: Glass-Reinforced Nylon
Style: Folding Knife w/Locking Liner

U.S. Patent No. 7,918,028

ENTICER™ WITH VEFF FLAT TOP SERRATIONS®

Designed by MJ Lerch in Sussex, Wisconsin



- OutBurst® Assisted Opening
- Fire Safe® Thumb Disk Actuation
- Veff Flat Top Serrations®

1061

Blade: Length: 3.240" (82.3 mm)
Edge: Combination
Steel: 1.4034, 56-58 HRC
Finish: Satin
Thickness: 0.090" (2.2 mm)
Closed: 3.930" (99.8 mm)
Open: 7.190" (182.6 mm)
Weight: 2.0 oz. (56.7 g)
Handle: Glass-Reinforced Nylon
Style: Folding Knife w/Locking Liner

U.S. Patent No. 7,918,028

ART DECO™

Designed by Ken Steigerwalt in Orangeville, Pennsylvania



- Classic Slip Joint Feature
- Obelisk Inspired Shape & Design
- Black G10 Handles

6403

Blade: Length: 2.240" (56.9 mm)
Edge: Plain
Steel: 8Cr13MoV, 56-60 HRC
Finish: Satin
Thickness: 0.090" (2.3 mm)
Closed: 2.950" (75.0 mm)
Open: 5.190" (132.0 mm)
Weight: 0.8 oz. (23.0 g)
Handle: Black G10
Style: Folding Knife w/Slip Joint

QUILL

Designed by Ken Steigerwalt in Orangeville, Pennsylvania



- Classic Slip Joint Feature
- Stainless Steel Bolsters
- Black Bone Handles

6404

Blade: Length: 2.240" (56.9 mm)
Edge: Plain
Steel: 8Cr13MoV, 56-60 HRC
Finish: Satin
Thickness: 0.090" (2.3 mm)
Closed: 2.910" (74.0 mm)
Open: 5.150" (131.0 mm)
Weight: 1.4 oz. (40.0 g)
Handle: Stainless Steel Bolsters w/Black Bone
Style: Folding Knife w/Slip Joint

DAEDALUS™

Designed by Ken Steigerwalt in Orangeville, Pennsylvania



- Classic Slip Joint Feature
- "Winged" Mother of Pearl Handle Inlay
- Satin Blade Finish

6405

Blade: Length: 2.240" (56.9 mm)
Edge: Plain
Steel: 8Cr13MoV, 56-60 HRC
Finish: Satin
Thickness: 0.090" (2.3 mm)
Closed: 2.910" (74.0 mm)
Open: 5.150" (45.0 mm)
Weight: 1.6 oz. (40.0 g)
Handle: Stainless Steel w/Mother of Pearl
Style: Folding Knife w/Slip Joint

IGNITOR®

Designed by Ken Steigerwalt in Orangeville, Pennsylvania



- OutBurst® Assisted Opening
- Fire Safe® Thumb Stud Actuation
- Tough G10 Handles

6850

Blade: Length: 3.380" (85.8 mm)
Edge: Plain
Steel: 8Cr14MoV, 58-59 HRC
Finish: Satin
Thickness: 0.110" (2.7 mm)
Closed: 4.250" (107.9 mm)
Open: 7.500" (190.5 mm)
Weight: 3.5 oz. (99.2 g)
Handle: G10
Style: Folding Knife w/Locking Liner

U.S. Patent No. 7,918,028
Available in Clam Pack as 6850C

IGNITOR® WITH VEFF SERRATIONS™

Designed by Ken Steigerwalt in Orangeville, Pennsylvania



- OutBurst® Assisted Opening
- Fire Safe® Thumb Stud Actuation
- Veff Serrations™

6855

Blade: Length: 3.380" (85.8 mm)
Edge: Combination
Steel: 8Cr14MoV, 58-59 HRC
Finish: Satin
Thickness: 0.110" (2.7 mm)
Closed: 4.250" (107.9 mm)
Open: 7.500" (190.5 mm)
Weight: 3.5 oz. (99.2 g)
Handle: G10
Style: Folding Knife w/Locking Liner

U.S. Patent Nos. 7,918,028 and D559,939
Available in Clam Pack as 6855C

IGNITOR® T

Designed by Ken Steigerwalt in Orangeville, Pennsylvania



- OutBurst® Assisted Opening
- Fire Safe® Thumb Stud Actuation
- Tough G10 Handles™

6860

Blade: Length: 3.380" (85.8 mm)
Edge: Plain
Steel: 8Cr14MoV, 58-59 HRC
Finish: Dark Gray Titanium Nitride
Thickness: 0.110" (2.7 mm)
Closed: 4.250" (107.9 mm)
Open: 7.500" (190.5 mm)
Weight: 3.5 oz. (99.2 g)
Handle: G10
Style: Folding Knife w/Locking Liner

U.S. Patent No. 7,918,028

IGNITOR™ T WITH VEFF SERRATIONS™

Designed by Ken Steigerwalt in Orangeville, Pennsylvania



- OutBurst™ Assisted Opening
- Fire Safe™ Thumb Stud Actuation
- Veff Serrations™

6865

Blade:

Length: 3.380" (85.8 mm)

Edge: Combination

Steel: 8Cr14MoV, 58-59 HRC

Finish: Dark Gray Titanium Nitride

Thickness: 0.110" (2.7 mm)

Closed:

4.250" (107.9 mm)

Open:

7.500" (190.5 mm)

Weight:

3.5 oz. (99.2 g)

Handle:

G10

Style:

Folding Knife w/Locking Liner

U.S. Patent Nos. 7,918,028 and D559,939

Available in Clam Pack as 6865C

INCENDOR™

Designed by Ken Steigerwalt in Orangeville, Pennsylvania



- OutBurst™ Assisted Opening
- Fire Safe™ Thumb Stud Actuation
- Tough G10 Handles

6870

Blade:

Length: 2.960" (75.2 mm)

Edge: Plain

Steel: 8Cr13MoV, 58-60 HRC

Finish: Bead Blast w/Gray Titanium Nitride

Thickness: 0.110" (2.7 mm)

Closed:

3.970" (100.8 mm)

Open:

6.940" (176.2 mm)

Weight:

3.8 oz. (108.0 g)

Handle:

G10

Style:

Folding Knife w/Locking Liner

U.S. Patent No. 7,918,028

Available in Clam Pack as 6870C

INCENDOR™ WITH VEFF FLAT TOP SERRATIONS™

Designed by Ken Steigerwalt in Orangeville, Pennsylvania



- OutBurst™ Assisted Opening
- Fire Safe™ Thumb Stud Actuation
- Veff Flat Top Serrations™

6875

Blade:

Length: 2.960" (75.2 mm)

Edge: Combination

Steel: 8Cr13MoV, 58-60 HRC

Finish: Bead Blast w/Gray Titanium Nitride

Thickness: 0.110" (2.7 mm)

Closed:

3.970" (100.8 mm)

Open:

6.940" (176.2 mm)

Weight:

3.8 oz. (108.0 g)

Handle:

G10

Style:

Folding Knife w/Locking Liner

U.S. Patent No. 7,918,028

Available in Clam Pack as 6875C

NEW**G.S.D.™ GET.S**T.DONE**

Designed by Liong Mah in Palm Bay, Florida



- IKBS™ Ball Bearing Pivot System
- Clean Style Lines
- Low Profile 2-Position Pocket Clip

3700

Blade:

Length: 3.310" (84.0 mm)

Edge: Plain

Steel: AUS 8, 57-59 HRC

Finish: Satin

Thickness: 0.120" (3.0 mm)

Closed:

4.330" (109.9 mm)

Open:

7.690" (195.3 mm)

Weight:

5.5 oz. (156.0 g)

Handle:

420J2 Stainless Steel

Style:

Folding Knife w/Frame Lock

NEW**G.S.D.™ GET.S**T.DONE WITH VEFF FLAT TOP SERRATIONS®**

Designed by Liong Mah in Palm Bay, Florida



- IKBS™ Ball Bearing Pivot System
- Veff Flat Top Serrations®
- Low Profile 2-Position Pocket Clip

3710

Blade: Length: 3.310" (84.0 mm)
 Edge: Combination
 Steel: AUS 8, 57-59 HRC
 Finish: Satin
 Thickness: 0.120" (3.0 mm)
 Closed: 4.330" (109.9 mm)
 Open: 7.690" (195.3 mm)
 Weight: 5.5 oz. (156.0 g)
 Handle: 420J2 Stainless Steel
 Style: Folding Knife w/Frame Lock

NEW**JOURNEYER™**

Designed by Liong Mah in Palm Bay, Florida



- Classic Slip Joint
- Stonewashed Blade
- Stored T6 Wrench to Adjust Pivot or Lock Blade

6530

Blade: Length: 2.760" (70.1 mm)
 Edge: Plain
 Steel: 8Cr12MoV, 58-60 HRC
 Finish: Black Stonewash
 Thickness: 0.118" (3.0 mm)
 Closed: 3.860" (98.0 mm)
 Open: 6.500" (165.1 mm)
 Weight: 2.9 oz. (82.2 g)
 Handle: Glass-Reinforced Nylon
 Style: Folding Knife w/Slip Joint

NEW**JOURNEYER™ WITH VEFF FLAT TOP SERRATIONS®**

Designed by Liong Mah in Palm Bay, Florida



- Classic Slip Joint
- Stonewash Blade
- Stored T6 Wrench to Adjust Pivot or Lock Blade

6531

Blade: Length: 2.760" (70.1 mm)
 Edge: Combination
 Steel: 8Cr12MoV, 58-60 HRC
 Finish: Black Stonewash
 Thickness: 0.118" (3.0 mm)
 Closed: 3.860" (98.0 mm)
 Open: 6.500" (165.1 mm)
 Weight: 2.9 oz. (82.2 g)
 Handle: Glass-Reinforced Nylon
 Style: Folding Knife w/Slip Joint

NEW**NORTHCLIFFE™**

Designed by Steve Jernigan in Milton, Florida



- Large, Classy, Pocket Folder
- Slim Profile w/ Exceptional Fit & Finish
- Ebony Wood Handle Insert

7490

Blade: Length: 2.950" (74.9 mm)
 Edge: Plain
 Steel: 8Cr13MoV, 58-60 HRC
 Finish: Satin
 Thickness: 0.110" (2.8 mm)
 Closed: 4.350" (110.5 mm)
 Open: 7.560" (192.0 mm)
 Weight: 3.3 oz. (94.0 g)
 Handle: Mirror Polish Stainless w/Ebony Wood Inlay
 Style: Folding Knife w/Locking Liner

V.A.S.P.™ (VERIFY. ADVANCE. SECURE. PROCEED)

Designed by Steve Jernigan in Milton, Florida



- IKBS™ Ball Bearing Pivot System
- Textured, Tough, G10 Handles
- Top of Blade Flipper

7480

Blade:

Length: 3.710" (94.2 mm)
 Edge: Plain
 Steel: 8Cr14MoV, 58-59 HRC
 Finish: Satin

Closed:

Thickness: 0.120" (3.0 mm)

Open:

4.650" (118.1 mm)

Weight:

8.250" (209.5 mm)

Handle:

4.1 oz. (116.0 g)

Style:

G10 w/Textured Pattern

Folding Knife w/Locking Liner

V.A.S.P.™ (VERIFY. ADVANCE. SECURE. PROCEED) W/ VEFF FLAT TOP SERRATIONS®

Designed by Steve Jernigan in Milton, Florida



- IKBS™ Ball Bearing Pivot System
- Textured, Tough, G10 Handles
- Veff Flat Top Serrations®

7481

Blade:

Length: 3.710" (94.2 mm)
 Edge: Combination
 Steel: 8Cr14MoV, 58-59 HRC
 Finish: Satin

Closed:

Thickness: 0.120" (3.0 mm)

Open:

4.650" (118.1 mm)

Weight:

8.250" (209.5 mm)

Handle:

4.1 oz. (116.0 g)

Style:

G10 w/Textured Pattern

Folding Knife w/Locking Liner

PERSIAN FOLDER

Designed by Steve Jernigan in Milton, Florida



- Satin Blade Finish
- Stainless Steel Handles w/G10 Overlays
- Frame Lock Safety

7470

Blade:

Length: 2.710" (68.8 mm)
 Edge: Plain
 Steel: 8Cr14MoV, 58-59 HRC
 Finish: Satin

Closed:

Thickness: 0.110" (2.7 mm)

Open:

3.610" (91.6 mm)

Weight:

6.300" (160.0 mm)

Handle:

2.2 oz. (62.4 g)

Style:

Stainless Steel w/Black G10 Overlay

Folding Knife w/Frame Lock

K.I.S.S.®

Designed by Ed Halligan in Ocean Springs, Mississippi



- Keep It Super Simple
- Innovative Two-Piece Design: Blade and Frame
- Bead Blast Finish

5500

Blade:

Length: 2.250" (57.1 mm)
 Edge: Plain
 Steel: 3Cr13, 52-55 HRC
 Finish: Bead Blast

Closed:

Thickness: 0.120" (3.0 mm)

Open:

3.500" (88.9 mm)

Weight:

5.750" (146.0 mm)

Handle:

2.3 oz. (65.2 g)

Style:

Stainless Steel

Folding Knife w/Frame Lock

Available in Clam Pack as 5500C

K.I.S.S.® IN THE DARK

Designed by Ed Halligan in Ocean Springs, Mississippi



- K.I.S.S. – Keep. It. Super. Simple.
- Innovative Two-Piece Design: Blade and Frame
- Black Corrosion Resistant Coating

5500K

Blade: Length: 2.250" (57.1 mm)
 Edge: Plain
 Steel: 3Cr13, 52-55 HRC
 Finish: Black Corrosion Resistant Coating
 Thickness: 0.120" (3.0 mm)
 Closed: 3.500" (88.9 mm)
 Open: 5.750" (146.0 mm)
 Weight: 2.3 oz. (65.2 g)
 Handle: Stainless Steel
 Style: Folding Knife w/Frame Lock

Available in Clam Pack as 5500KC

K.I.S.S.® WITH TRIPLE POINT™ SERRATIONS

Designed by Ed Halligan in Ocean Springs, Mississippi



- K.I.S.S. – Keep. It. Super. Simple.
- Innovative Two-Piece Design: Blade and Frame
- Triple Point™ Serrations

5510

Blade: Length: 2.250" (57.1 mm)
 Edge: Combination
 Steel: 3Cr13, 52-55 HRC
 Finish: Bead Blast
 Thickness: 0.120" (3.0 mm)
 Closed: 3.500" (88.9 mm)
 Open: 5.750" (146.0 mm)
 Weight: 2.3 oz. (65.2 g)
 Handle: Stainless Steel
 Style: Folding Knife w/Frame Lock

Available in Clam Pack as 5510C

K.I.S.S.® IN THE DARK WITH TRIPLE POINT™ SERRATIONS

Designed by Ed Halligan in Ocean Springs, Mississippi



- K.I.S.S. – Keep. It. Super. Simple.
- Innovative Two-Piece Design: Blade and Frame
- Triple Point™ Serrations

5510K

Blade: Length: 2.250" (57.1 mm)
 Edge: Combination
 Steel: 3Cr13, 52-55 HRC
 Finish: Black Corrosion Resistant Coating
 Thickness: 0.120" (3.0 mm)
 Closed: 3.500" (88.9 mm)
 Open: 5.750" (146.0 mm)
 Weight: 2.3 oz. (65.2 g)
 Handle: Stainless Steel
 Style: Folding Knife w/Frame Lock

DELILAH'S P.E.C.K.™

Designed by Ed Halligan in Ocean Springs, Mississippi



- Innovative Two-Piece Design: Blade and Frame
- Bead Blast Finish
- P.E.C.K. – Precision. Engineered. Compact. Knife.

5520

Blade: Length: 1.750" (44.4 mm)
 Edge: Plain
 Steel: 3Cr13, 52-55 HRC
 Finish: Bead Blast
 Thickness: 0.100" (2.5 mm)
 Closed: 2.625" (66.6 mm)
 Open: 4.250" (107.9 mm)
 Weight: 0.9 oz. (25.5 g)
 Handle: Stainless Steel
 Style: Folding Knife w/Frame Lock

Available in Clam Pack as 5520C

DELILAH'S P.E.C.K.™ IN THE DARK

Designed by Ed Halligan in Ocean Springs, Mississippi



- Innovative Two-Piece Design: Blade and Frame
- Black Corrosion Resistant Coating
- P.E.C.K. - Precision. Engineered. Compact. Knife.

5520K

Blade:	Length: 1.750" (44.4 mm)
	Edge: Plain
	Steel: 3Cr13, 52-55 HRC
	Finish: Black Corrosion Resistant Coating
	Thickness: 0.100" (2.5 mm)
Closed:	2.625" (66.6 mm)
Open:	4.250" (107.9 mm)
Weight:	0.9 oz. (25.5 g)
Handle:	Stainless Steel
Style:	Folding Knife w/Frame Lock

SWEET K.I.S.S.®

Designed by Ed Halligan in Ocean Springs, Mississippi



- Black Glass-Reinforced Nylon Handle
- Black Oxide Blade Finish
- Sheath w/Quick Release Lanyard Feature

2356

Blade:	Length: 4.030" (102.3 mm)
	Edge: Plain
	Steel: 8Cr13MoV, 58-59 HRC
	Finish: Black Oxide
	Thickness: 0.150" (3.8 mm)
Overall:	7.690" (195.3 mm)
Weight:	2.3 oz. (65.2 g)
Handle:	Black Glass-Reinforced Nylon
Style:	Fixed Blade Knife w/Sheath
Sheath:	Material: Black Polypropylene
	Lanyard w/Quick Release
Weight:	0.7 oz. (19.8 g)

Available in Clam Pack as 2356C

DRIFTER

- Tough G10 Handles
- Gray Titanium Nitride Blade Finish
- Thumb Stud Blade Deployment

6450K

Blade:	Length: 2.875" (73.0 mm)
	Edge: Plain
	Steel: 8Cr14MoV, 58-59 HRC
	Finish: Gray Titanium Nitride
	Thickness: 0.100" (2.5 mm)
Closed:	3.625" (92.0 mm)
Open:	6.500" (165.1 mm)
Weight:	2.4 oz. (68.0 g)
Handle:	G10
Style:	Folding Knife w/Locking Liner

DRIFTER WITH TRIPLE POINT™ SERRATIONS

- Tough G10 Handles
- Gray Titanium Nitride Blade Finish
- Triple Point™ Serrations

6460K

Blade:	Length: 2.875" (73.0 mm)
	Edge: Combination
	Steel: 8Cr14MoV, 58-59 HRC
	Finish: Gray Titanium Nitride
	Thickness: 0.100" (2.5 mm)
Closed:	3.625" (92.0 mm)
Open:	6.500" (165.1 mm)
Weight:	2.4 oz. (68.0 g)
Handle:	G10
Style:	Folding Knife w/Locking Liner

Available in Clam Pack as 6460KC

DRIFTER STAINLESS HANDLE

- Satin Blade Finish
- Stainless Steel Handles
- Frame Lock Safety

6450S

Blade: Length: 2.875" (73.0 mm)
 Edge: Plain
 Steel: 8Cr14MoV, 58-59 HRC
 Finish: Satin
 Thickness: 0.100" (2.5 mm)
 Closed: 3.625" (92.0 mm)
 Open: 6.500" (165.1 mm)
 Weight: 3.2 oz. (90.7 g)
 Handle: Stainless Steel
 Style: Folding Knife w/Frame Lock

DRIFTER STAINLESS HANDLE LARGE

- Satin Blade Finish
- Stainless Steel Handles
- Frame Lock Safety

6451S

Blade: Length: 3.200" (81.2 mm)
 Edge: Plain
 Steel: 8Cr13MoV, 58-59 HRC
 Finish: Satin
 Thickness: 0.110" (2.8 mm)
 Closed: 4.180" (106.1 mm)
 Open: 7.380" (187.4 mm)
 Weight: 4.4 oz. (125.0 g)
 Handle: Stainless Steel
 Style: Folding Knife w/Frame Lock

Available in Clam Pack as 6451SC

DRIFTER STAINLESS HANDLE LARGE WITH VEFF FLAT TOP SERRATIONS®

- Satin Blade Finish
- Stainless Steel Handles
- Veff Flat Top Serrations®

6461S

Blade: Length: 3.200" (81.2 mm)
 Edge: Combination
 Steel: 8Cr13MoV, 58-59 HRC
 Finish: Satin
 Thickness: 0.110" (2.8 mm)
 Closed: 4.180" (106.1 mm)
 Open: 7.380" (187.4 mm)
 Weight: 4.4 oz. (125.0 g)
 Handle: Stainless Steel
 Style: Folding Knife w/Frame Lock

PAZODA™ 2

- Dark Gray Titanium Nitride Blade Finish
- Stainless Steel Handles
- Thumb Jimping on Blade for Optimum Cutting Control

6470

Blade: Length: 2.125" (53.9 mm)
 Edge: Plain
 Steel: 8Cr14MoV, 58-59 HRC
 Finish: Dark Gray Titanium Nitride
 Thickness: 0.100" (2.5 mm)
 Closed: 3.000" (76.2 mm)
 Open: 5.125" (130.1 mm)
 Weight: 1.5 oz. (42.5 g)
 Handle: Stainless Steel
 Style: Folding Knife w/Frame Lock

PAZODA™**6480**

Blade:

Length: 2.625" (66.6 mm)

Edge: Plain

Steel: 8Cr14MoV, 58-59 HRC

Finish: Dark Gray Titanium Nitride

Thickness: 0.100" (2.5 mm)

Closed:

3.750" (95.2 mm)

Open:

6.500" (165.1 mm)

Weight:

3.1 oz. (87.9 g)

Handle:

Stainless Steel

Style:

Folding Knife w/Frame Lock

- Dark Gray Titanium Nitride Blade Finish
- Stainless Steel Handles
- Thumb Jimping on Blade for Optimum Cutting Control

PAZODA™ WITH TRIPLE POINT™ SERRATIONS**6490**

Blade:

Length: 2.625" (66.6 mm)

Edge: Combination

Steel: 8Cr14MoV, 58-59 HRC

Finish: Dark Gray Titanium Nitride

Thickness: 0.100" (2.5 mm)

Closed:

3.750" (95.2 mm)

Open:

6.500" (165.1 mm)

Weight:

3.1 oz. (87.9 g)

Handle:

Stainless Steel

Style:

Folding Knife w/Frame Lock

Available in Clam Pack as 6490C

- Dark Gray Titanium Nitride Blade Finish
- Stainless Steel Handles
- Triple Point™ Serrations

PAZODA™ LARGE**6481**

Blade:

Length: 3.080" (78.2 mm)

Edge: Plain

Steel: 8Cr13MoV, 58-59 HRC

Finish: Gray Titanium Nitride

Thickness: 0.110" (2.8 mm)

Closed:

4.240" (107.7 mm)

Open:

7.310" (187.6 mm)

Weight:

3.8 oz. (108.0 g)

Handle:

Stainless Steel

Style:

Folding Knife w/Frame Lock

Available in Clam Pack as 6481C

- Dark Gray Titanium Nitride Blade Finish
- Stainless Steel Handles
- Thumb Jimping on Blade for Optimum Cutting Control

PAZODA™ LARGE WITH VEFF FLAT TOP SERRATIONS®**6491**

Blade:

Length: 3.080" (78.2 mm)

Edge: Combination

Steel: 8Cr13MoV, 58-59 HRC

Finish: Gray Titanium Nitride

Thickness: 0.110" (2.8 mm)

Closed:

4.240" (107.7 mm)

Open:

7.310" (187.6 mm)

Weight:

3.8 oz. (108.0 g)

Handle:

Stainless Steel

Style:

Folding Knife w/Frame Lock

- Dark Gray Titanium Nitride Blade Finish
- Stainless Steel Handles
- Veff Flat Top Serrations®

NEW**DEVIATION™**

Designed by Terry Renner in Palmetto, Florida



- IKBS™ Ball Bearing Pivot System
- Dual Blade Finish – Mirror and Satin
- Distinctive, Futuristic Blade Design

2392

Blade: Length: 3.100" (78.7 mm)
Edge: Plain
Steel: 8Cr14MoV, 57-59 HRC
Finish: Two-Tone
Thickness: 0.120" (3.1 mm)
Closed: 4.540" (115.3 mm)
Open: 7.630" (193.8 mm)
Weight: 6.0 oz. (170.0 g)
Handle: Stainless Steel w/Ti-Nitride Finish
Style: Folding Knife w/Locking Liner

NEW**CLING-ON™**

Designed by Ed Van Hoy in Abingdon, Virginia



- Magnetic Retention Features
- CRKT™ Dog Tag Necklace
- Magnetic Sheath and Lanyard Release

5030

Blade: Length: 3.220" (81.7 mm)
Edge: Plain
Steel: 8Cr13MoV, 58-60 HRC
Finish: Satin
Thickness: 0.110" (2.8 mm)
Overall: 4.880" (123.9 mm)
Weight: 1.3 oz. (37.0 g)
Handle: ABS, Plastic Insert w/Rare Earth Magnet
Style: Fixed Blade Knife w/Magnetic Retention Sheath
Sheath: Material: Black Leather
Weight: 1.4 oz. (40.0 g)

LAKE 111™ Z

Designed by Ron Lake in Eugene, Oregon



- L.B.S.™ Safety
- Glass-Reinforced Nylon Handles
- Denim Carry Sheath

7255Z

Blade: Length: 3.125" (79.3 mm)
Edge: Plain
Steel: 8Cr14MoV, 58-59 HRC
Finish: Satin
Thickness: 0.110" (2.8 mm)
Closed: 4.125" (104.7 mm)
Open: 7.250" (184.1 mm)
Weight: 3.1 oz. (87.9 g)
Handle: Glass-Reinforced Nylon
Style: Folding Knife w/Lockback Safety

U.S. Patent No. 7,140,110

LAKE 111™ Z WITH TRIPLE POINT™ SERRATIONS

Designed by Ron Lake in Eugene, Oregon



- L.B.S.™ Safety
- Triple Point™ Serrations
- Denim Carry Sheath

7256Z

Blade: Length: 3.125" (79.3 mm)
Edge: Combination
Steel: 8Cr14MoV, 58-59 HRC
Finish: Satin
Thickness: 0.110" (2.8 mm)
Closed: 4.125" (104.7 mm)
Open: 7.250" (184.1 mm)
Weight: 3.1 oz. (87.9 g)
Handle: Glass-Reinforced Nylon
Style: Folding Knife w/Lockback Safety

U.S. Patent No. 7,140,110

LAKE 111™ Z 2

Designed by Ron Lake in Eugene, Oregon



- L.B.S.™ Safety
- Glass-Reinforced Nylon Handles
- Thumb Stud Blade Opening

7253Z

Blade: Length: 2.500" (63.5 mm)
Edge: Plain
Steel: 8Cr14MoV, 58-59 HRC
Finish: Satin
Thickness: 0.090" (2.2 mm)
Closed: 3.500" (88.9 mm)
Open: 6.000" (152.4 mm)
Weight: 2.1 oz. (59.5 g)
Handle: Glass-Reinforced Nylon
Style: Folding Knife w/Lockback Safety

U.S. Patent No. 7,140,110

LAKE 111™ Z 2 WITH TRIPLE POINT™ SERRATIONS

Designed by Ron Lake in Eugene, Oregon



- L.B.S.™ Safety
- Glass-Reinforced Nylon Handles
- Triple Point™ Serrations

7254Z

Blade: Length: 2.500" (63.5 mm)
Edge: Combination
Steel: 8Cr14MoV, 58-59 HRC
Finish: Satin
Thickness: 0.090" (2.2 mm)
Closed: 3.500" (88.9 mm)
Open: 6.000" (152.4 mm)
Weight: 2.1 oz. (59.5 g)
Handle: Glass-Reinforced Nylon
Style: Folding Knife w/Lockback Safety

U.S. Patent No. 7,140,110

M16® - 02Z TANTO

Designed by Kit Carson in Vine Grove, Kentucky



- AutoLAWKS™ Safety
- Carson Flipper Opening
- Glass-Reinforced Nylon Handles

M16-02Z

Blade: Length: 3.000" (76.2 mm)
Edge: Plain
Steel: AUS 8, 58-59 HRC
Finish: Bead Blast
Thickness: 0.120" (3.0 mm)
Closed: 4.250" (107.9 mm)
Open: 7.375" (187.3 mm)
Weight: 3.6 oz. (102.0 g)
Handle: Glass-Reinforced Nylon
Style: Folding Knife w/Locking Liner

U.S. Patent Nos. 5,596,808 and 7,437,822

M16® - 12Z TANTO WITH TRIPLE POINT™ SERRATIONS

Designed by Kit Carson in Vine Grove, Kentucky



- AutoLAWKS™ Safety
- Triple Point™ Serrations
- Glass-Reinforced Nylon Handles

M16-12Z

Blade: Length: 3.000" (76.2 mm)
Edge: Combination
Steel: AUS 8, 58-59 HRC
Finish: Bead Blast
Thickness: 0.120" (3.0 mm)
Closed: 4.250" (107.9 mm)
Open: 7.375" (187.3 mm)
Weight: 3.6 oz. (102.0 g)
Handle: Glass-Reinforced Nylon
Style: Folding Knife w/Locking Liner

U.S. Patent Nos. 5,596,808 and 7,437,822
Available in Clam Pack as M16-12ZC

M16® - 03Z SPEAR POINT

Designed by Kit Carson in Vine Grove, Kentucky



- AutoLAWKS™ Safety
- Carson Flipper Opening
- Glass-Reinforced Nylon Handles

M16-03Z

Blade: Length: 3.500" (88.9 mm)
 Edge: Plain
 Steel: AUS 8, 58-59 HRC
 Finish: Bead Blast
 Thickness: 0.120" (3.0 mm)
 Closed: 4.750" (120.6 mm)
 Open: 8.250" (209.5 mm)
 Weight: 3.5 oz. (99.2 g)
 Handle: Glass-Reinforced Nylon
 Style: Folding Knife w/Locking Liner

U.S. Patent Nos. 5,596,808 and 7,437,822

M16® - 13Z SPEAR POINT WITH TRIPLE POINT™ SERRATIONS

Designed by Kit Carson in Vine Grove, Kentucky



- AutoLAWKS™ Safety
- Triple Point™ Serrations
- Glass-Reinforced Nylon Handles

M16-13Z

Blade: Length: 3.500" (88.9 mm)
 Edge: Combination
 Steel: AUS 8, 58-59 HRC
 Finish: Bead Blast
 Thickness: 0.120" (3.0 mm)
 Closed: 4.750" (120.6 mm)
 Open: 8.250" (209.5 mm)
 Weight: 3.5 oz. (99.2 g)
 Handle: Glass-Reinforced Nylon
 Style: Folding Knife w/Locking Liner

U.S. Patent Nos. 5,596,808 and 7,437,822
 Available in Clam Pack as M16-13ZC**M16® - 04Z TANTO LARGE**

Designed by Kit Carson in Vine Grove, Kentucky



- AutoLAWKS™ Safety
- Carson Flipper Opening
- Glass-Reinforced Nylon Handles

M16-04Z

Blade: Length: 3.875" (98.4 mm)
 Edge: Plain
 Steel: AUS 8, 58-59 HRC
 Finish: Bead Blast
 Thickness: 0.120" (3.0 mm)
 Closed: 5.375" (136.5 mm)
 Open: 9.250" (234.9 mm)
 Weight: 5.9 oz. (167.0 g)
 Handle: Glass-Reinforced Nylon
 Style: Folding Knife w/Locking Liner

U.S. Patent Nos. 5,596,808 and 7,437,822

M16® - 14Z TANTO LARGE WITH TRIPLE POINT™ SERRATIONS

Designed by Kit Carson in Vine Grove, Kentucky



- AutoLAWKS™ Safety
- Triple Point™ Serrations
- Glass-Reinforced Nylon Handles

M16-14Z

Blade: Length: 3.875" (98.4 mm)
 Edge: Combination
 Steel: AUS 8, 58-59 HRC
 Finish: Bead Blast
 Thickness: 0.120" (3.0 mm)
 Closed: 5.375" (136.5 mm)
 Open: 9.250" (234.9 mm)
 Weight: 5.9 oz. (167.0 g)
 Handle: Glass-Reinforced Nylon
 Style: Folding Knife w/Locking Liner

U.S. Patent Nos. 5,596,808 and 7,437,822

M16® - 01Z SPEAR POINT

Designed by Kit Carson in Vine Grove, Kentucky



- AutoLAWKS™ Safety
- Carson Flipper Opening
- Glass-Reinforced Nylon Handles

M16-01Z

Blade: Length: 3.125" (79.3 mm)
Edge: Plain
Steel: 8Cr15MoV, 58-59 HRC
Finish: Bead Blast
Thickness: 0.080" (2.0 mm)
Closed: 4.000" (101.6 mm)
Open: 7.125" (180.9 mm)
Weight: 2.3 oz. (87.9 g)
Handle: Glass-Reinforced Nylon
Style: Folding Knife w/Locking Liner

U.S. Patent Nos. 5,596,808 and 7,437,822
Available in Clam Pack as M16-01ZC

M16® - 01KZ SPEAR POINT BLACK

Designed by Kit Carson in Vine Grove, Kentucky



- AutoLAWKS™ Safety
- Black Corrosion Resistant EDP Coating
- Glass-Reinforced Nylon Handles

M16-01KZ

Blade: Length: 3.125" (79.3 mm)
Edge: Plain
Steel: 8Cr15MoV, 58-59 HRC
Finish: Black EDP Finish
Thickness: 0.080" (2.0 mm)
Closed: 4.000" (101.6 mm)
Open: 7.125" (180.9 mm)
Weight: 2.3 oz. (87.9 g)
Handle: Glass-Reinforced Nylon
Style: Folding Knife w/Locking Liner

U.S. Patent Nos. 5,596,808 and 7,437,822
Available in Clam Pack as M16-01KZC

M16® - 10Z TANTO WITH TRIPLE POINT™ SERRATIONS

Designed by Kit Carson in Vine Grove, Kentucky



- AutoLAWKS™ Safety
- Triple Point™ Serrations
- Glass-Reinforced Nylon Handles

M16-10Z

Blade: Length: 3.000" (76.2 mm)
Edge: Combination
Steel: 8Cr15MoV, 58-59 HRC
Finish: Bead Blast
Thickness: 0.080" (2.0 mm)
Closed: 4.000" (101.6 mm)
Open: 7.125" (180.9 mm)
Weight: 2.3 oz. (87.9 g)
Handle: Glass-Reinforced Nylon
Style: Folding Knife w/Locking Liner

U.S. Patent Nos. 5,596,808 and 7,437,822
Available in Clam Pack as M16-10ZC

M16® - 10KZ TANTO BLACK WITH TRIPLE POINT™ SERRATIONS

Designed by Kit Carson in Vine Grove, Kentucky



- AutoLAWKS™ Safety
- Triple Point™ Serrations
- Black Corrosion Resistant EDP Coating

M16-10KZ

Blade: Length: 3.000" (76.2 mm)
Edge: Combination
Steel: 8Cr15MoV, 58-59 HRC
Finish: Black EDP
Thickness: 0.080" (2.0 mm)
Closed: 4.000" (101.6 mm)
Open: 7.125" (180.9 mm)
Weight: 2.3 oz. (87.9 g)
Handle: Glass-Reinforced Nylon
Style: Folding Knife w/Locking Liner

U.S. Patent Nos. 5,596,808 and 7,437,822
Available in Clam Pack as M16-10KZC

M16® - 01S SPEAR POINT STAINLESS STEEL HANDLE

Designed by Kit Carson in Vine Grove, Kentucky



- Frame Lock
- Stainless Steel Handles
- Carson Flipper Opening

M16-01S

Blade: Length: 3.060" (77.7 mm)
 Edge: Plain
 Steel: 8Cr13MoV, 58-59 HRC
 Finish: Bead Blast
 Thickness: 0.098" (2.4 mm)
 Closed: 4.000" (101.6 mm)
 Open: 7.130" (181.1 mm)
 Weight: 2.6 oz. (73.7 g)
 Handle: Stainless Steel
 Style: Folding Knife w/Frame Lock

Available in Clam Pack as M16-01SC

M16® - 01KS SPEAR POINT BLACK STAINLESS STEEL HANDLE

Designed by Kit Carson in Vine Grove, Kentucky



- Frame Lock
- Stainless Steel Handles
- Black Corrosion Resistant EDP Coating

M16-01KS

Blade: Length: 3.060" (77.7 mm)
 Edge: Plain
 Steel: 8Cr13MoV, 58-59 HRC
 Finish: Black EDP
 Thickness: 0.098" (2.4 mm)
 Closed: 4.000" (101.6 mm)
 Open: 7.130" (181.1 mm)
 Weight: 2.6 oz. (73.7 g)
 Handle: Stainless Steel
 Style: Folding Knife w/Frame Lock

M16® - 10S TANTO WITH TRIPLE POINT™ SERRATIONS STAINLESS STEEL HANDLE

Designed by Kit Carson in Vine Grove, Kentucky



- Frame Lock
- Stainless Steel Handles
- Triple Point™ Serrations

M16-10S

Blade: Length: 3.060" (77.7 mm)
 Edge: Combination
 Steel: 8Cr13MoV, 58-59 HRC
 Finish: Bead Blast
 Thickness: 0.098" (2.4 mm)
 Closed: 4.000" (101.6 mm)
 Open: 7.000" (177.8 mm)
 Weight: 2.6 oz. (73.7 g)
 Handle: Stainless Steel
 Style: Folding Knife w/Frame Lock

M16® - 10KS TANTO BLACK WITH TRIPLE POINT™ SERRATIONS STAINLESS STEEL HANDLE

Designed by Kit Carson in Vine Grove, Kentucky



- Frame Lock
- Triple Point™ Serrations
- Black Corrosion Resistant EDP Coating

M16-10KS

Blade: Length: 3.060" (77.7 mm)
 Edge: Combination
 Steel: 8Cr13MoV, 58-59 HRC
 Finish: Black EDP
 Thickness: 0.098" (2.4 mm)
 Closed: 4.000" (101.6 mm)
 Open: 7.000" (177.8 mm)
 Weight: 2.6 oz. (73.7 g)
 Handle: Stainless Steel
 Style: Folding Knife w/Frame Lock

Available in Clam Pack as M16-10KSC

M16™ - 10KSF TANTO BLACK WITH TRIPLE POINT™ SERRATIONS STAINLESS STEEL HANDLE

Designed by Kit Carson in Vine Grove, Kentucky



- Frame Lock w/Dual Hilt
- Triple Point™ Serrations
- Black Corrosion Resistant EDP Coating

M16-10KSF

Blade:	Length: 2.940" (74.6 mm) Edge: Combination Steel: 8Cr13MoV, 58-59 HRC Finish: Black EDP Thickness: 0.098" (2.4 mm)
Closed:	4.000" (101.6 mm)
Open:	7.000" (177.8 mm)
Weight:	2.7 oz. (73.7 g)
Handle:	Stainless Steel w/Dual Hilt
Style:	Folding Knife w/Frame Lock

M21™ - 02 ALUMINUM

Designed by Kit Carson in Vine Grove, Kentucky



- AutoLAWKS™ Safety
- Carson Flipper Opening
- Aluminum Handles

M21-02

Blade:	Length: 3.000" (76.2 mm) Edge: Plain Steel: AUS 8, 58-59 HRC Finish: Non Reflective Frost Thickness: 0.120" (3.0 mm)
Closed:	4.250" (107.9 mm)
Open:	7.250" (184.1 mm)
Weight:	3.2 oz. (90.7 g)
Handle:	Aluminum
Style:	Folding Knife w/Locking Liner

U.S. Patent Nos. 5,596,808 and 7,437,822

M21™ - 12 ALUMINUM WITH TRIPLE POINT™ SERRATIONS

Designed by Kit Carson in Vine Grove, Kentucky



- AutoLAWKS™ Safety
- Carson Flipper Opening
- Triple Point™ Serrations

M21-12

Blade:	Length: 3.000" (76.2 mm) Edge: Combination Steel: AUS 8, 58-59 HRC Finish: Non Reflective Frost Thickness: 0.120" (3.0 mm)
Closed:	4.250" (107.9 mm)
Open:	7.250" (184.1 mm)
Weight:	3.2 oz. (90.7 g)
Handle:	Aluminum
Style:	Folding Knife w/Locking Liner

U.S. Patent Nos. 5,596,808 and 7,437,822

M21™ - 04 ALUMINUM LARGE

Designed by Kit Carson in Vine Grove, Kentucky



- AutoLAWKS™ Safety
- Carson Flipper Opening
- Aluminum Handles

M21-04

Blade:	Length: 3.990" (101.3 mm) Edge: Plain Steel: AUS 8, 58-59 HRC Finish: Non Reflective Frost Thickness: 0.140" (3.5 mm)
Closed:	5.375" (136.5 mm)
Open:	9.250" (234.9 mm)
Weight:	5.5 oz. (156 g)
Handle:	Aluminum
Style:	Folding Knife w/Locking Liner

U.S. Patent Nos. 5,596,808 and 7,437,822

M21™ - 14 ALUMINUM LARGE WITH TRIPLE POINT™ SERRATIONS

Designed by Kit Carson in Vine Grove, Kentucky



- AutoLAWKS™ Safety
- Carson Flipper Opening
- Triple Point™ Serrations

M21-14

Blade: Length: 3.990" (101.3 mm)
 Edge: Combination
 Steel: AUS 8, 58-59 HRC
 Finish: Non Reflective Frost
 Thickness: 0.140" (3.5 mm)
 Closed: 5.375" (136.5 mm)
 Open: 9.250" (234.9 mm)
 Weight: 5.5 oz. (156 g)
 Handle: Aluminum
 Style: Folding Knife w/Locking Liner

U.S. Patent Nos. 5,596,808 and 7,437,822

M21™ - 02G G10

Designed by Kit Carson in Vine Grove, Kentucky



- AutoLAWKS™ Safety
- Carson Flipper Opening
- G10 Handles

M21-02G

Blade: Length: 3.125" (79.3 mm)
 Edge: Plain
 Steel: 8Cr14MoV, 58-59 HRC
 Finish: Dark Gray Titanium Nitride
 Thickness: 0.120" (3.0 mm)
 Closed: 4.250" (107.9 mm)
 Open: 7.250" (184.1 mm)
 Weight: 3.8 oz. (108.0 g)
 Handle: G10
 Style: Folding Knife w/Locking Liner

U.S. Patent Nos. 5,596,808 and 7,437,822

M21™ - 12G G10 WITH VEFF SERRATIONS™

Designed by Kit Carson in Vine Grove, Kentucky



- AutoLAWKS™ Safety
- Carson Flipper Opening
- Veff Serrations™

M21-12G

Blade: Length: 3.125" (79.3 mm)
 Edge: Combination
 Steel: 8Cr14MoV, 58-59 HRC
 Finish: Dark Gray Titanium Nitride
 Thickness: 0.120" (3.0 mm)
 Closed: 4.250" (107.9 mm)
 Open: 7.250" (184.1 mm)
 Weight: 3.8 oz. (108.0 g)
 Handle: G10
 Style: Folding Knife w/Locking Liner

U.S. Patent Nos. 5,596,808, 7,437,822, D559,939

M21™ - 04G G10 LARGE

Designed by Kit Carson in Vine Grove, Kentucky



- AutoLAWKS™ Safety
- Carson Flipper Opening
- G10 Handles

M21-04G

Blade: Length: 3.875" (98.4 mm)
 Edge: Plain
 Steel: 8Cr14MoV, 58-59 HRC
 Finish: Dark Gray Titanium Nitride
 Thickness: 0.140" (3.5 mm)
 Closed: 5.375" (136.5 mm)
 Open: 9.250" (234.9 mm)
 Weight: 5.9 oz. (167.0 g)
 Handle: G10
 Style: Folding Knife w/Locking Liner

U.S. Patent Nos. 5,596,808 and 7,437,822

M21™ - 14G G10 LARGE WITH VEFF SERRATIONS™

Designed by Kit Carson in Vine Grove, Kentucky



- AutoLAWKS™ Safety
- Carson Flipper Opening
- Veff Serrations™

M21-14G

Blade: Length: 3.875" (98.4 mm)
 Edge: Combination
 Steel: 8Cr14MoV, 58-59 HRC
 Finish: Dark Gray Titanium Nitride
 Thickness: 0.140" (3.5 mm)
 Closed: 5.375" (136.5 mm)
 Open: 9.250" (234.9 mm)
 Weight: 5.9 oz. (167.0 g)
 Handle: G10
 Style: Folding Knife w/Locking Liner

U.S. Patent Nos. 5,596,808, 7,437,822, D559,939

M4™ - 02

Designed by Kit Carson in Vine Grove, Kentucky



- OutBurst® Assisted Opening
- G10 Bolster w/White Bone Handle
- Satin Blade Finish

M4-02

Blade: Length: 3.250" (82.5 mm)
 Edge: Plain
 Steel: 8Cr13MoV, 58-59 HRC
 Finish: Satin
 Thickness: 0.121" (3.0 mm)
 Closed: 3.750" (95.2 mm)
 Open: 7.000" (177.8 mm)
 Weight: 3.3 oz. (93.6 g)
 Handle: G10 Bolster w/White Bone
 Style: Folding Knife w/Locking Liner

M4™ - 02S

Designed by Kit Carson in Vine Grove, Kentucky



- OutBurst® Assisted Opening
- LAWKS™ Safety
- Stainless Steel Bolster w/Red Stag Handle

M4-02S

Blade: Length: 3.250" (82.5 mm)
 Edge: Plain
 Steel: 8Cr13MoV, 58-59 HRC
 Finish: Satin
 Thickness: 0.121" (3.0 mm)
 Closed: 3.750" (95.2 mm)
 Open: 7.000" (177.8 mm)
 Weight: 3.3 oz. (93.6 g)
 Handle: Stainless Steel Bolster w/Red Stag
 Style: Folding Knife w/Locking Liner

U.S. Patent No. 5,596,808

M4™ - 02W

Designed by Kit Carson in Vine Grove, Kentucky



- OutBurst® Assisted Opening
- LAWKS™ Safety
- Stainless Steel Bolster w/Burl Wood Handle

M4-02W

Blade: Length: 3.250" (82.5 mm)
 Edge: Plain
 Steel: 8Cr13MoV, 58-59 HRC
 Finish: Satin
 Thickness: 0.121" (3.0 mm)
 Closed: 3.750" (95.2 mm)
 Open: 7.000" (177.8 mm)
 Weight: 3.3 oz. (93.6 g)
 Handle: Stainless Steel Bolster w/Burl Wood
 Style: Folding Knife w/Locking Liner

U.S. Patent No. 5,596,808

NEW**HOIST'N LOK™ BIG GAME HOIST**

Designed by Russ Kommer in Fargo, North Dakota

- Innovative, Patented, Secure, Cam Lock
- 4:1 Mechanical Pulley System
- Includes: Pulley, Gambrel, Rope

**HOIST1**

- Specs:** 1 6061 Aluminum Lobed Pulley Wheel
CNC Machined Knurling on Pulley Wheel
3 POM Plastic Pulley Wheels
- Pulley Housing:** Length: 7.5" (19.0 cm)
Width: 2.2" (5.6 cm)
Depth: 1.8" (4.6 cm)
- Gambrel:** Length: 25.0" (19.1 cm)
Height: 6.38" (16.3 cm)
Rod Diameter: .39" (0.95 cm)
- Weight:** Pulley & Carabiner: 1 lb. 8 oz. (680.4 g)
- Capacity:** 500 lbs. (226.8 kg)
- Includes:** 2 Carabiner
40 ft. (12.2 m) of 8mm rope

U.S. Patent No. 8,596,615

NEW**HOIST'N LOK™ TREE STAND HOIST**

Designed by Russ Kommer in Fargo, North Dakota

- Innovative, Patented, Secure, Cam Lock
- Includes: Pulley, Extension Arm
- Strap, Ratchet, and Rope

**HOIST2**

- Specs:** 1 6061 Aluminum Lobed Pulley Wheel
CNC Machined Knurling on Pulley Wheel
6.5 ft. (1.9m) of Heavy Duty Nylon Ratchet Strap
- Carbon Steel Housing:** Length: 7.5" (19.0 cm)
Width: 2.2" (5.6 cm)
Depth: 1.8" (4.5 cm)
- Capacity:** 100 lbs. (45.3 kg)
- Includes:** 1 Carabiner
45 ft. (13.7 m) of 6mm rope

U.S. Patent No. 8,596,615

NEW**HUNT'N FISCH™**

Designed by Larry Fischer in Boise, Idaho

- Spine Friction Grooves for Blade Control
- Multi-Colored G10 Handle
- High Quality Leather Sheath

**2861**

- Blade:** Length: 2.990" (75.9 mm)
Edge: Plain
Steel: 8Cr13MoV, 58-60 HRC
Finish: Satin
Thickness: 0.130" (3.3 mm)
7.250" (184.1 mm)
- Overall:** 7.250" (184.1 mm)
- Weight:** 3.6 oz. (102.0 g)
- Handle:** Multi-Layered G10 with Purple Fob
- Style:** Fixed Blade Knife w/Sheath
- Sheath:** Material: Leather
Weight: 1.5 oz. (42.5 g)

ONION SKINNER™

Designed by Ken Onion in Kaneohe, Hawaii



- Superior Skinning Blade Shape
- Double Injection Molded Handle w/Textured Grip
- Fitted, Custom Style, Leather Sheath

K700KXP

- Blade:** Length: 3.750" (95.2 mm)
Edge: Plain
Steel: Böhler K110, 58-60 HRC
Finish: Satin
Thickness: 0.142" (3.6 mm)
8.000" (203.2 mm)
- Overall:** 8.000" (203.2 mm)
- Weight:** 3.7 oz. (105.0 g)
- Handle:** Double Injection PP/TPR w/ Textured Grip
- Style:** Fixed Blade Knife w/Sheath
- Sheath:** Material: Leather
Weight: 2.1 oz. (59.5 g)

Available in Clam Pack as K700KXPC

SHAKAULU™

Designed by Ken Onion in Kaneohe, Hawaii



- "Ulu" Blade Style w/Gut Hook
- Double Injection Molded Handle w/Textured Grip
- Polypropylene Clip In Sheath

K900KKP

Blade: Length: 5.500" (139.7 mm)
 Edge: Plain
 Steel: 65Mn Carbon Steel, 56-58 HRC
 Finish: Black Powder Coat
 Thickness: 0.267" (6.7 mm)
 Overall: 9.500" (241.3 mm)
 Weight: 15.3 oz. (433.7 g)
 Handle: Double Injection PP/TPE w/Textured Grip
 Style: Fixed Blade Knife w/Sheath
 Sheath: Material: Polypropylene
 Weight: 3.2 oz. (90.7 g)

FREE RANGE® HUNTER COMPACT

Designed by Russ Kommer in Fargo, North Dakota



- Lightweight Fixed Blade
- All Weather Grip Handle
- Durable Reinforced Nylon Sheath

2044

Blade: Length: 3.100" (78.7 mm)
 Edge: Plain
 Steel: 8Cr13MoV, 58-60 HRC
 Finish: Satin
 Thickness: 0.120" (3.0 mm)
 Overall: 6.810" (173.0 mm)
 Weight: 2.0 oz. (56.7 g)
 Handle: Double Injection Molded
 Style: Fixed Blade Knife w/Sheath
 Sheath: Material: Reinforced Nylon w/Utility Pocket
 Weight: 3.1 oz. (87.9 g)

FREE RANGE® HUNTER FOLDER COMPACT

Designed by Russ Kommer in Fargo, North Dakota



- Lightweight Folding Knife
- All Weather Grip Handle
- One Position Clip

2045

Blade: Length: 3.350" (82.5 mm)
 Edge: Plain
 Steel: 8Cr13MoV, 58-60 HRC
 Finish: Satin
 Thickness: 0.120" (3.0 mm)
 Closed: 4.580" (116.3 mm)
 Open: 7.810" (197.8 mm)
 Weight: 3.6 oz. (102.0 g)
 Handle: Double Injection Molded
 Style: Folding Knife w/Lockback Safety

FREE RANGE® HUNTER

Designed by Russ Kommer in Fargo, North Dakota



- Lightweight Fixed Blade
- All Weather Grip Handle
- Durable Reinforced Nylon Sheath

2040

Blade: Length: 4.250" (107.9 mm)
 Edge: Plain
 Steel: 8Cr13MoV, 58-59 HRC
 Finish: Satin
 Thickness: 0.135" (3.4 mm)
 Overall: 9.062" (230.1 mm)
 Weight: 3.6 oz. (102.0 g)
 Handle: Double Injection Molded
 Style: Fixed Blade Knife w/Sheath
 Sheath: Material: Reinforced Nylon w/Utility Pocket
 Weight: 3.3 oz. (93.6 g)

Available in Clam Pack as 2040C

FREE RANGE® HUNTER FOLDER

Designed by Russ Kommer in Fargo, North Dakota



- Lightweight Folding Knife
- All Weather Grip Handle
- Durable Reinforced Nylon Sheath

2041

Blade: Length: 3.750" (82.5 mm)
Edge: Plain
Steel: 8Cr13MoV, 58-59 HRC
Finish: Satin
Thickness: 0.120" (3.0 mm)
Closed: 5.125" (95.2 mm)
Open: 8.875" (177.8 mm)
Weight: 4.4 oz. (93.6 g)
Handle: Double Injection Molded
Style: Folding Knife w/Lockback Safety

Sheath: Material: Reinforced Nylon, Belt Carry Style w/Snap Closure
Weight: 1.1 oz. (93.6 g)

Available in Clam Pack as 2041C

FREE RANGE® HUNTER WITH GUT HOOK

Designed by Russ Kommer in Fargo, North Dakota



- Lightweight Fixed Blade w/Gut Hook
- All Weather Grip Handle
- Durable Reinforced Nylon Sheath

2042

Blade: Length: 4.250" (107.9 mm)
Edge: Plain w/Gut Hook
Steel: 8Cr13MoV, 58-59 HRC
Finish: Satin
Thickness: 0.135" (3.4 mm)
Overall: 9.062" (230.1 mm)
Weight: 3.6 oz. (102.0 g)
Handle: Double Injection Molded
Style: Fixed Blade Knife w/Sheath

Sheath: Material: Reinforced Nylon w/Utility Pocket
Weight: 3.3 oz. (93.6 g)

Available in Clam Pack as 2042C

FREE RANGE® HUNTER FOLDER WITH GUT HOOK

Designed by Russ Kommer in Fargo, North Dakota



- Lightweight Folding Knife w/Gut Hook
- All Weather Grip Handle
- Durable Reinforced Nylon Sheath

2043

Blade: Length: 3.750" (82.5 mm)
Edge: Plain w/Gut Hook
Steel: 8Cr13MoV, 58-59 HRC
Finish: Satin
Thickness: 0.120" (3.0 mm)
Closed: 5.125" (95.2 mm)
Open: 8.875" (177.8 mm)
Weight: 4.4 oz. (93.6 g)
Handle: Double Injection Molded
Style: Folding Knife w/Lockback Safety

Sheath: Material: Reinforced Nylon, Belt Carry Style w/Snap Closure
Weight: 1.1 oz. (93.6 g)

Available in Clam Pack as 2043C

2-SHOT® FOLDER

Designed by Russ Kommer in Fargo, North Dakota



- Mirror Polish Blade Finish
- Orange G10 Handle
- High Quality Leather Sheath

2841

Blade: Length: 3.000" (76.2 mm)
Edge: Plain
Steel: 12C27 Sandvik, 59-61 HRC
Finish: Mirror Polish
Thickness: 0.110" (2.7 mm)
Closed: 4.250" (107.9 mm)
Open: 7.250" (184.1 mm)
Weight: 4.3 oz. (122.0 g)
Handle: G10
Style: Folding Knife w/Lockback Safety

Sheath: Material: Leather
Weight: 1.3 oz. (36.9 g)

BROW TINE™

Designed by Russ Kommer in Fargo, North Dakota



- Mirror Polish Blade Finish
- Stainless Steel Bolsters w/Red Stag Handles
- High Quality Leather Sheath

2860

Blade: Length: 3.000" (76.2 mm)
Edge: Plain
Steel: 9Cr18MoV, 58-60 HRC
Finish: Mirror Polish
Thickness: 0.140" (3.5 mm)
Overall: 7.250" (184.1 mm)
Weight: 4.0 oz. (113.0 g)
Handle: Stainless Steel Bolster w/Red Stag and Mosaic Pins
Style: Fixed Blade Knife w/Sheath
Sheath: Material: Leather
Weight: 1.3 oz. (36.9 g)

*Natural handle components may vary in color and grain pattern.

GRANDPA'S FAVORITE®

Designed by Russ Kommer in Fargo, North Dakota



- Mirror Polish Blade Finish
- Stainless Steel Bolsters w/Traditional Stag Handles
- High Quality Leather Sheath

2845

Blade: Length: 3.150" (80.0 mm)
Edge: Plain
Steel: 12C27 Sandvik, 59-61 HRC
Finish: Mirror Polish
Thickness: 0.114" (2.8 mm)
Overall: 7.300" (185.4 mm)
Weight: 3.8 oz. (108.0 g)
Handle: Stainless Steel Bolster w/Traditional Stag
Style: Fixed Blade Knife w/Sheath
Sheath: Material: Leather
Weight: 4.9 oz. (139 g)

*Natural handle components may vary in color and grain pattern.

BIG EDDY™

Designed by Russ Kommer in Fargo, North Dakota



- Top Side Hollow Grind
- Flat Bottom Grind Lifts the Fillet
- Molded Glass-Reinforced Nylon Sheath

3008

Blade: Length: 6.750" (171.4 mm)
Edge: Plain
Steel: 420J2, 51-53 HRC
Finish: Satin
Thickness: 0.080" (2.0 mm)
Overall: 12.250" (311.1 mm)
Weight: 3.3 oz. (93.6 g)
Handle: Glass-Reinforced Nylon w/Textured Grip
Style: Fixed Blade Knife w/Sheath
Sheath: Material: Glass-Reinforced Nylon
Weight: 1.75 oz. (49.6 g)

BIG EDDY™ II

Designed by Russ Kommer in Fargo, North Dakota



- Top Side Hollow Grind
- Flat Bottom Grind Lifts the Fillet
- Molded Glass-Reinforced Nylon Sheath

3010

Blade: Length: 9.250" (234.9 mm)
Edge: Plain
Steel: 420J2, 51-53 HRC
Finish: Satin
Thickness: 0.065" (1.6 mm)
Overall: 14.750" (374.7 mm)
Weight: 3.7 oz. (105.0 g)
Handle: Glass-Reinforced Nylon w/Textured Grip
Style: Fixed Blade Knife w/Sheath
Sheath: Material: Glass-Reinforced Nylon
Weight: 2.10 oz. (59.5 g)

CLARK FORK™ FILLET KNIFE

Designed by Ken Steigerwalt in Orangeville, Pennsylvania



- Innovative "Tail Lock" Safety Bar
- Blade Locks Securely Into Place
- Reinforced Nylon Sheath

3085

Blade: Length: 10.940" (277.9 mm)
Edge: Plain
Steel: 5Cr13MoV, 53-55 HRC
Finish: Satin
Thickness: 0.060" (1.5 mm)

Closed: 7.130" (181.0 mm)
Open: 10.940" (280.0 mm)
Weight: 1.8 oz. (51.0 g)

Handle: Glass-Reinforced Nylon w/Plastic Insert

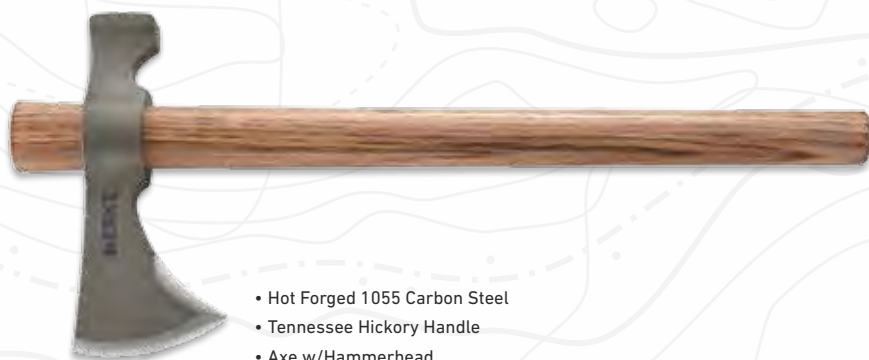
Style: Folding Knife w/Tail Lock

Sheath: Material: Reinforced Nylon
Weight: 0.300 oz. (8.5 g)

U.S. Patent Pending
Available in Clam Pack as 3085C

WOODS CHOGAN™ T-HAWK

Designed by Ryan Johnson of RMJ Tactical in Chattanooga, Tennessee



- Hot Forged 1055 Carbon Steel
- Tennessee Hickory Handle
- Axe w/Hammerhead

2730

Blade: Length: 4.210" (106.9 mm)
Edge: Axe w/Hammer
Steel: 1055 Carbon Steel, 50-55 HRC
Finish: Hammer Finish
Thickness: 0.520" (13.2 mm)

Overall: Length: 19.130" (485.9 mm)
Weight: 2 lbs 1.4 oz. (947 g)

Handle: Tennessee Hickory

WOODS KANGEE™ T-HAWK

Designed by Ryan Johnson of RMJ Tactical in Chattanooga, Tennessee



- Hot Forged 1055 Carbon Steel
- Tennessee Hickory Handle
- Axe w/Spike

2735

Blade: Length: 4.210" (106.9 mm)
Edge: Axe w/Spike
Steel: 1055 Carbon Steel, 50-55 HRC
Finish: Hammer Finish
Thickness: 0.400" (13.2 mm)

Overall: Length: 19.130" (485.9 mm)
Weight: 1 lbs 15.7 oz. (899 g)

Handle: Tennessee Hickory

MINIMALIST® WHARNCLIFFE

Designed by Alan Folts in Melbourne, Florida



- Bead Blast Blade Finish
- Useful, Compact, Utility, Neck Knife
- Glass-Reinforced Nylon Sheath

2385

Blade: Length: 2.000" (50.8 mm)
Edge: Plain
Steel: 5Cr15MoV, 55-57 HRC
Finish: Bead Blast
Thickness: 0.100" (2.5 mm)

Overall: 5.000" (127.0 mm)
Weight: 1.1 oz. (31.2 g)

Handle: Polished Resin Infused Fiber

Style: Fixed Blade Knife w/Sheath

Sheath: Material: Glass-Reinforced Nylon
Lanyard: Black Paracord
Weight: 0.5 oz. (14.2 g)

MINIMALIST® TANTO

Designed by Alan Folts in Melbourne, Florida



- Bead Blast Blade Finish
- Useful, Compact, Utility, Neck Knife
- Glass-Reinforced Nylon Sheath

2386

Blade: Length: 2.125" (53.9 mm)
Edge: Plain
Steel: 5Cr15MoV, 55-57 HRC
Finish: Bead Blast
Thickness: 0.110" (2.7 mm)
Overall: 5.130" (130.3 mm)
Weight: 1.6 oz. (45.4 g)
Handle: Polished Resin Infused Fiber
Style: Fixed Blade Knife w/Sheath

Sheath: Material: Glass-Reinforced Nylon
Lanyard: Black Paracord
Weight: 0.5 oz. (14.2 g)

MINIMALIST® BOWIE

Designed by Alan Folts in Melbourne, Florida



- Bead Blast Blade Finish
- Useful, Compact, Utility, Neck Knife
- Glass-Reinforced Nylon Sheath

2387

Blade: Length: 2.125" (53.9 mm)
Edge: Plain
Steel: 5Cr15MoV, 55-57 HRC
Finish: Bead Blast
Thickness: 0.110" (2.7 mm)
Overall: 5.130" (130.3 mm)
Weight: 1.6 oz. (45.4 g)
Handle: Polished Resin Infused Fiber
Style: Fixed Blade Knife w/Sheath

Sheath: Material: Glass-Reinforced Nylon
Lanyard: Black Paracord
Weight: 0.5 oz. (14.2 g)

Available in Clam Pack as 2387C

KERAMIN™

Designed by Alan Folts in Melbourne, Florida



- Extreme, Needle Sharp, Blade Tip
- Useful, Compact, Utility, Neck Knife
- Glass-Reinforced Nylon Sheath

2389

Blade: Length: 2.310" (58.6 mm)
Edge: Plain
Steel: 5Cr15MoV, 55-57 HRC
Finish: Bead Blast
Thickness: 0.120" (3.0 mm)
Overall: 4.780" (121.4 mm)
Weight: 1.7 oz. (48.2 g)
Handle: Polished Resin Infused Fiber
Style: Fixed Blade Knife w/Sheath

Sheath: Material: Glass-Reinforced Nylon
Lanyard: Black Paracord
Weight: 0.5 oz. (14.2 g)

Available in Clam Pack as 2389C

S.P.E.W.™ (SMALL. POCKET. EVERYDAY. WHARNCLIFFE)

Designed by Alan Folts in Melbourne, Florida



- Bead Blast Blade Finish
- Useful, Compact, Utility, Neck Knife
- Glass-Reinforced Nylon Sheath

2388

Blade: Length: 3.000" (76.2 mm)
Edge: Plain
Finish: Bead Blast
Steel: 5Cr15MoV, 55-57 HRC
Thickness: 0.100" (2.5 mm)
Overall: 6.250" (158.7 mm)
Weight: 3.0 oz. (85.0 g)
Handle: Two-Tone G10
Style: Fixed Blade Knife w/Sheath

Sheath: Material: Glass-Reinforced Nylon
Lanyard: Black Paracord
Weight: 1.1 oz. (31.2 g)

Available in Clam Pack as 2388C

EAT'N TOOL®

Designed by Liong Mah in Palm Bay, Florida



- Lightweight Spoon/Fork Combination
- Flat Screwdriver, 6,8,10mm Hex
- Bottle Opener

SPECS

Overall: Length: 4.000" (101.6 mm)
 Weight: 1.5 oz. (42.5 g)
 Material: 3Cr13 Stainless Steel, 52-55 HRC

*Carabiner is non-load bearing.

9100C: Silver
 Clam Pack 9100C

9100FC: Fuchsia
 Clam Pack 9100FC

9100KC: Black
 Clam Pack 9100KC

9100TC: Tangerine
 Clam Pack 9100TC

9100YC: Yellow
 Clam Pack 9100YC

EAT'N TOOL® XL

Designed by Liong Mah in Palm Bay, Florida



- Spoon/Fork Combination
- Flat Screwdriver, 6,8,10mm Hex
- Bottle Opener, GI Style Can Opener

SPECS

Overall: Length: 6.130" (155.7 mm)
 Weight: 2.7 oz. (76.5 g)
 Material: 3Cr13, 52-55HRC

*Carabiner is non-load bearing.

9110C: Silver
 Clam Pack 9110C

9110KC: Black
 Clam Pack 9110KC

BEAR CLAW™ SHARP TIP

Designed by Russ Kommer in Fargo, North Dakota



- Bead Blast Blade Finish
- Molded Handle w/Palm Swell for Grip
- Positive Locking System Secures Knife in Sheath

2500

Blade: Length: 2.3750" (60.3 mm)
 Edge: Plain
 Steel: AUS 4, 55-57 HRC
 Finish: Bead Blast
 Thickness: 0.130" (3.3 mm)
 Overall: 5.750" (146.0 mm)
 Weight: 3.2 oz. (90.7 g)
 Handle: Glass-Reinforced Nylon
 Style: Fixed Blade Knife w/Sheath

Sheath: Material: Glass-Reinforced Nylon
 Weight: 1.1 oz. (31.2 g)

BEAR CLAW™ BLUNT TIP WITH TRIPLE POINT™ SERRATIONS

Designed by Russ Kommer in Fargo, North Dakota



- Triple Point™ Serrations
- Molded Handle w/Palm Swell for Grip
- Positive Locking System Secures Knife in Sheath

2510

Blade: Length: 2.3750" (60.3 mm)
 Edge: Combination
 Steel: AUS 4, 55-57 HRC
 Finish: Bead Blast
 Thickness: 0.130" (3.3 mm)
 Overall: 5.750" (146.0 mm)
 Weight: 3.2 oz. (90.7 g)
 Handle: Glass-Reinforced Nylon
 Style: Fixed Blade Knife w/Sheath

Sheath: Material: Glass-Reinforced Nylon
 Weight: 1.1 oz. (31.2 g)

BEAR CLAW™ SHARP TIP WITH TRIPLE POINT™ SERRATIONS

Designed by Russ Kommer in Fargo, North Dakota



- Triple Point™ Serrations
- Molded Handle w/Palm Swell for Grip
- Positive Locking System Secures Knife in Sheath

2515

Blade:

Length: 2.3750" (60.3 mm)
 Edge: Combination
 Steel: AUS 4, 55-57 HRC
 Finish: Bead Blast
 Thickness: 0.130" (3.3 mm)
 Overall: 5.750" (146.0 mm)
 Weight: 3.2 oz. (90.7 g)

Overall:

Weight:

Handle:

Style:

Sheath:

Material: Glass-Reinforced Nylon
 Weight: 1.1 oz. (31.2 g)

NEW**SAKER™**

Designed by Abe Elias in Leamington, Ontario, Canada



- Bushcraft Knife, Walnut Wood Handle
- True Scandi Grind Blade
- High Quality Leather Sheath

3760

Blade:

Length: 4.530" (115.0 mm)
 Edge: Plain
 Steel: 1075 Carbon Steel, 50-55 HRC
 Finish: Brushed Silver
 Thickness: 0.140" (3.6 mm)
 Overall: 9.190" (233.0 mm)
 Weight: 5.3 oz. (150.0 g)

Overall:

Weight:

Handle:

Style:

Sheath:

Material: High Quality Leather
 Weight: 3.2 oz. (90.7 g)

NEW**MAH-CHETE™**

Designed by Liong Mah in Palm Bay, Florida



- Walnut Wood Handle
- Upswept Handle Clearance for Extended Use
- Reinforced Nylon Sheath

3100

Blade:

Length: 17.440" (443.0 mm)
 Edge: Plain
 Steel: 1075 Carbon Steel, 50-55 HRC
 Finish: Hammer Finish and Satin
 Thickness: 0.180" (4.6 mm)
 Overall: 17.440" (443.0 mm)
 Weight: 1 lb. 3.2 oz. (544.3 g)

Overall:

Weight:

Handle:

Style:

Sheath:

Material: Reinforced Nylon w/
 Polypropylene Liner
 Weight: 5.0 oz. (142.0 g)

HOODWORK™ WITH VEFF SERRATIONS™

Designed by Karen Hood in Coeur D'Alene, Idaho



- Acid Etch, Sandblast, Ceramic Blade Coating
- Multi-Layer G10 Handle w/Paracord
- High Quality Leather Sheath

3500

Blade:

Length: 6.130" (155.7 mm)
 Edge: Combination
 Steel: 1095 High Carbon Steel,
 56-58 HRC
 Finish: Acid Etch, Sandblast,
 Ceramic Coating
 Thickness: 0.160" (4.0 mm)
 Overall: 11.310" (287.0 mm)
 Weight: 9.2 oz. (261.0 g)

Overall:

Weight:

Handle:

Style:

Sheath:

Material: Leather
 Weight: 4.0 oz. (113.0 g)

U.S. Patent No. D559,939

HCK1™ HOOD CAMP KNIFE

Designed by Karen Hood in Coeur D'Alene, Idaho



- Acid Etch, Sandblast, Ceramic Blade Coating
- Multi-Layer G10 Handle w/Paracord
- High Quality Leather Sheath

**3510**

Blade: Length: 6.130" (155.7 mm)
Edge: Plain
Steel: 1095 High Carbon Steel, 56-58 HRC
Finish: Acid Etch, Sandblast, Ceramic Coating
Thickness: 0.160" (4.0 mm)
11.310" (287.0 mm)
Overall: 8.2 oz. (232.0 g)
Weight: Polished Resin Infused Fiber w/ Orange Paracord Lanyard
Handle: Fixed Blade Knife w/Sheath
Style:
Sheath: Material: Leather
Weight: 4.9 oz. (139.0 g)

RSK MK5™

Designed by Doug Ritter in Gilbert, Arizona

- Stonewash Blade Finish
- Survival Preparedness Tin
- Glass-Reinforced Nylon Sheath

**2380**

Blade: Length: 1.750" (44.4 mm)
Edge: Plain
Steel: 2Cr13, 51-53 HRC
Finish: Stonewash
Thickness: 0.120" (3.0 mm)
3.810" (96.7 mm)
Overall: 0.9 oz. (25.5 g)
Weight: 2Cr13
Handle: Fixed Blade Knife w/Sheath
Style:
Sheath: Material: Glass-Reinforced Nylon
Lanyard: Black Paracord
Weight: 0.3 oz. (8.5 g)

RSK MK6™

Designed by Doug Ritter in Gilbert, Arizona

- Stonewash Blade Finish
- Orange Paracord Wrapped Handle
- Glass-Reinforced Nylon Sheath

**2381**

Blade: Length: 2.950" (74.9 mm)
Edge: Plain
Steel: 8Cr13MoV, 56-58 HRC
Finish: Stonewash
Thickness: 0.140" (3.5 mm)
6.380" (162.0 mm)
Overall: 2.2 oz. (62.4 g)
Weight: Stainless Steel w/Orange Paracord Wrap
Handle: Fixed Blade Knife w/Sheath
Style:
Sheath: Material: Glass-Reinforced Nylon
Lanyard: Black Paracord
Weight: 0.7 oz. (19.8 g)

CHANCEINHELL™ MACHETE

Designed by Ken Onion in Kaneohe, Hawaii

- Black Corrosion Resistant Blade Finish
- Football Texture Handle Grip
- Reinforced Nylon Sheath

**K910KKP**

Blade: Length: 12.000" (304.8 mm)
Edge: Plain
Steel: 65Mn Carbon Steel, 52-56 HRC
Finish: Bead Blast w/Black Powder Coat
Thickness: 0.100" (2.5 mm)
17.880" (454.2 mm)
Overall: 1 lb. 4 oz. (597.0 g)
Weight: PP Core & TPR Overmold w/ Textured Grip
Handle: Fixed Blade Knife w/Sheath
Style:
Sheath: Material: Reinforced Nylon
Weight: 6.1 oz. (173.0 g)

Available in Clam Pack as K910KKPC

HALFCHANCE™ PARANG

Designed by Ken Onion in Kaneohe, Hawaii



- Black Corrosion Resistant Blade Finish
- Football Texture Handle Grip
- Reinforced Nylon Sheath

K920KKP

Blade: Length: 14.000" (355.6 mm)
 Edge: Plain
 Steel: 65Mn Carbon Steel, 52-56 HRC
 Finish: Bead Blast w/Black Powder Coat
 Thickness: 0.100" (2.5 mm)
 Overall: 19.500" (495.3 mm)
 Weight: 1 lb. 4.4 oz. (578.3 g)
 Handle: PP Core & TPR Overmold w/ Textured Grip
 Style: Fixed Blade Knife w/Sheath
 Sheath: Material: Reinforced Nylon
 Weight: 6.1 oz. (173.0 g)

Available in Clam Pack as K920KKPC

REDEMPTION®

Designed by Ken Onion in Kaneohe, Hawaii



- Black Powder Coat Blade Finish
- Black G10 Finger Groove Handle
- Reinforced Nylon Sheath

K100KKP

Blade: Length: 9.500" (241.3 mm)
 Edge: Plain
 Steel: 01 Tool Steel, 56-58 HRC
 Finish: Black Powder Coat
 Thickness: 0.260" (6.6 mm)
 Overall: 15.000" (381.0 mm)
 Weight: 1 lb. 4.8oz. (589.7 g)
 Handle: G10
 Style: Fixed Blade Knife w/Sheath
 Sheath: Material: Reinforced Nylon w/ Thermal Plastic Insert
 Weight: 10.7 oz. (303.3 g)

PARA-SAW™ SURVIVAL BRACELET

Designed by Ken Onion in Kaneohe, Hawaii



- Tungsten Carbide Coated Wire Saw
- Emergency Paracord
- Blade Show Award - Accessory of the Year

Large

Length: Bracelet: 9.500" (241.3 mm)
 Length: Paracord: Est. 9 ft. (2.74 meters)
 Weight: 0.9 oz. (25.5 g)

Small

Length: Bracelet: 8.500" (215.9 mm)
 Length: Paracord: Est. 8 ft. (2.43 meters)
 Weight: 0.9 oz. (25.5 g)



9300KL: Black / Large
9300KS: Black / Small



9300DL: Green / Large
9300DS: Green / Small



9300TL: Tan / Large
9300TS: Tan / Small

NEW**QUICK RELEASE PARACORD BRACELET**

Designed by Jason Scarvalas in Hudson, New Hampshire



- Quick Release Feature
- Emergency Paracord
- CRKT® Medallion

Large

Length: Bracelet: 9.000" (228.6 mm)
 Length: Paracord: Est. 7 ft. (2.20 meters)
 Weight: 0.9 oz. (25.5 g)

Small

Length: Bracelet: 7.500" (190.5 mm)
 Length: Paracord: Est. 6.25 ft. (1.90 meters)
 Weight: 0.9 oz. (25.5 g)



9350KL: Black / Large
9350KS: Black / Small



9350TL: Tan / Large
9350TS: Tan / Small



9350FL: Fuschia / Large
9350FS: Fuschia / Small

NEW**ADJUSTABLE PARACORD BRACELET**

Designed by Tom Stokes in Williamsburg, Virginia



- Able to Adjust Size
- Emergency Survival Paracord

SPECS

Length: Bracelet: 9.000" (228.6 mm)
 Length: Paracord: Est. 9.5 ft. (2.89 meters)
 Weight: 0.9 oz. (25.5 g)

*Compatible with Stokes Paracord Bracelet Accessories: Compass, Fire Starter, L.E.D. Light, Bottle Opener (model 9702) CRKT® models 9700, 9701, 9703.

**9400K: Black****9400C: Camo****9400G: Green****9400PK: Pink/Black****9400T: Tan****NEW****BOTTLE OPENER PARACORD ACCESSORY**

Designed by Tom Stokes in Williamsburg, Virginia



- Bottle Opener
- Emergency Paracord
- Carabiner* for Keychain or Gear Loop.

SPECS:

Length: 5.880" (149.3 mm)
 Length: Paracord: Est. 6.0 ft. (1.8 meters)
 Material: 6061 T6 Al
 Weight: 0.8 oz. (22.7 g)

*Compatible with Stokes Paracord Bracelet Accessories: Compass, Fire Starter, L.E.D. Light, Bottle Opener. CRKT® models 9700, 9701, 9702, 9703. *Carabiner is non-load bearing.

**9450K: Black****9450T: Tan****STOKES PARACORD BRACELET ACCESSORY - COMPASS and LED**

Designed by Tom Stokes in Williamsburg, Virginia



- Compass
- L.E.D. Light
- Paracord Bracelet Survival Accessory

9700: Compass & LED

Length: 1.950" (49.5 mm)
 Width: 1.000" - 1.560" (25.4 - 39.6 mm)
 Weight: 1.0 oz. (28.3 g)

*Compatible with Stokes Paracord Bracelets: CRKT® 9400 and 9450 SKU series.

STOKES PARACORD BRACELET ACCESSORY - COMPASS AND FIRE STARTER

Designed by Tom Stokes in Williamsburg, Virginia



- Compass
- Fire Starter
- Paracord Bracelet Survival Accessory

9701: Compass & Fire Starter

Length: 1.950" (49.5 mm)
 Width: 1.000" - 1.560" (25.4 - 39.6 mm)
 Weight: 1.0 oz. (28.3 g)

*Compatible with Stokes Paracord Bracelets: CRKT® 9400 and 9450 SKU series.

STOKES PARACORD BRACELET ACCESSORY - BOTTLE OPENER

Designed by Tom Stokes in Williamsburg, Virginia



- Bottle Opener
- Paracord Bracelet Accessory

9702: Bottle Opener

Length: 1.950" (49.5 mm)
 Width: 1.000" - 1.560" (25.4 - 39.6 mm)
 Weight: 1.0 oz. (28.3 g)

*Compatible with Stokes Paracord Bracelets: CRKT® 9400 and 9450 SKU series.

STOKES PARACORD BRACELET ACCESSORY - COMPASS LED, AND FIRE STARTER

Designed by Tom Stokes in Williamsburg, Virginia



- Compass, L.E.D. Light
- Fire Starter
- Paracord Bracelet Survival Accessory

9703: Compass, LED & Fire Starter

Length: 1.950" (49.5 mm)
 Width: 1.000" - 1.560" (25.4 - 39.6 mm)
 Weight: 1.0 oz. (28.3 g)

*Compatible with Stokes Paracord Bracelets: CRKT® 9400 and 9450 SKU series.

SPARK'N SHARP™ FIRE STARTER

Designed by Tom Stokes in Williamsburg, Virginia



- Fire Starter
- Field Sharpener
- Quick Release Lanyard

9081

Length: 2.800" (71.1 mm)
 Width: 0.860" (21.8 mm)
 Weight: 1.3 oz. (589.7 g)
 Material: Glass-Reinforced Nylon Housing
 Tungsten Carbide Blade Sharpener
 Magnesium Rod Fire Starter

CRKT® TOOL

Designed by Ed Van Hoy and Tom Stokes



- Multi-Tool w/Push Button Spring Loaded Drivers
- Hex Bit Driver Attachments w/Useful Utility Saw and Blade
- Reinforced Nylon Belt Sheath

9200

Open: 6.375" (161.9 mm)
 Closed: 4.000" (101.6 mm)
 Weight: 5.1 oz. (145.0 g)
 Knife Blade Length: 2.250" (57.1 mm)
 Saw Blade Length: 2.500" (63.5 mm)
 Thickness: 0.100" (2.5 mm)
 Finish: Satin
 Steel: 5Cr15MoV, 55-56 HRC

Tool Bit Drivers: Hex Drivers H3, H4, H5, Flat Drivers 3, 5, 7, Phillips Drivers PH1, PH2, Magnetic PH3 Adaptor
 Handle: Glass-Reinforced Nylon w/ Stainless Steel

Style: Push Button w/Locking Liners
 Sheath: Material: Reinforced Nylon
 Weight: 3.3 oz. (93.6 g)

GUPPIE®

Designed by Launce Barber in Richmond, Virginia



- Adjustable Wrench
- Bit Drivers, Bottle Opener, w/L.E.D. Light
- Blade Show Award – Best Buy of the Year

9070

Open: 5.500" (139.7 mm)
 Closed: 3.500" (88.9 mm)
 Weight: 4.1 oz. (116.0 g)

Blade Length: 2.000" (50.8 mm)
 Edge: Plain
 Steel: 2Cr13, 51-53 HRC

Handle: Stainless Steel
 Style: Slip Joint

Bit Carrier
 Weight: 1.2 oz. (34.0 g)
 Batteries: 2 CR927 3V Lithium

U.S. Patent Nos. D576,002 and 6,223,372

Available in Clam Pack as 9070C

*Carabiner is non-load bearing

GUPPIE® BLACK

Designed by Launce Barber in Richmond, Virginia



- Bottle Opener
- Emergency Paracord
- Carabiner* for Keychain or Gear Loop

9070K

Open: 5.500" (139.7 mm)
 Closed: 3.500" (88.9 mm)
 Weight: 4.1 oz. (116.0 g)

Blade Length: 2.000" (50.8 mm)
 Edge: Plain
 Steel: 2Cr13, 51-53 HRC
 Finish: Black Oxide

Handle: Stainless Steel
 Style: Slip Joint

Bit Carrier
 Weight: 1.2 oz. (34.0 g)
 Batteries: 2 CR927 3V Lithium

U.S. Patent Nos. D576,002 and 6,223,372

*Carabiner is non-load bearing

ZILLA-TOOL®

Designed by Tom Stokes in Williamsburg, Virginia



- Pliers w/Wire Cutter
- Utility Blade with Triple Point™ Serrations
- Flat/Phillips Bit Drivers. Nylon Sheath Included

9060

Open: 9.625" (244.4 mm)
 Closed: 6.500" (165.1 mm)
 Weight: 7.4 oz. (210.0 g)

Blade: Length: 3.000" (76.2 mm)
 Edge: Combination w/Triple Point™
 Serrations
 Steel: 5Cr15MoV, 55-56 HRC
 Finish: Satin
 Thickness: 0.100" (2.5 mm)

Handle: Glass-Reinforced Nylon w/
 Stainless Steel

Style: Folding Knife w/Locking Liner
 Sheath: Material: Reinforced Nylon
 Weight: 1.4 oz. (40.0 g)

U.S. Patent. No. D557,100

ZILLA-TOOL® BLACK

Designed by Tom Stokes in Williamsburg, Virginia



- Pliers w/Wire Cutter
- Utility Blade with Triple Point™ Serrations
- Flat/Phillips Bit Drivers. Nylon Sheath Included

9060K

Open: 9.625" (244.4 mm)
 Closed: 6.500" (165.1 mm)
 Weight: 7.4 oz. (210.0 g)

Blade: Length: 3.000" (76.2 mm)
 Edge: Combination w/Triple Point™
 Serrations
 Steel: 5Cr15MoV, 55-56 HRC
 Finish: Black Oxide
 Thickness: 0.100" (2.5 mm)

Handle: Glass-Reinforced Nylon w/
 Stainless Steel

Style: Folding Knife w/Locking Liner

Sheath: Material: Reinforced Nylon
 Weight: 1.4 oz. (40.0 g)

U.S. Patent. No. D557,100

Available in Clam Pack as 9060KC

GET-A-WAY® DRIVER - HEX

Designed by Tom Stokes in Williamsburg, Virginia



- Driver w/Hex Bits
- Oxygen Bottle Valve Wrench
- L.E.D. Light

9094

Driver w/Hex

Bits: 1 Small Flat, 1 Medium Flat, 1 Small Phillips, 1 Medium Phillips

Length: 3.750" (95 mm)
 Thickness: 0.500" (13 mm)
 Wrenches: Hex Bit, 10mm, Oxygen Bottle
 Weight: 1.9 oz. (54 g)
 Handle: Glass-Reinforced Nylon
 Batteries: Two CR927 3V Lithium

Patents Pending.

*Carabiner is non-load bearing.

GET-A-WAY® DRIVER - TORX®

Designed by Tom Stokes in Williamsburg, Virginia



- Driver w/Torx® Bits
- Oxygen Bottle Valve Wrench
- L.E.D. Light

9095

Knife Maintenance Kit Driver w/Torx®

Bits: Nos. T5, T6, T8, T10

Length: 3.750" (95 mm)
 Thickness: 0.500" (13 mm)
 Wrenches: Hex Bit, 10mm, Oxygen Bottle
 Weight: 1.9 oz. (54 g)
 Handle: Glass-Reinforced Nylon
 Batteries: Two CR927 3V Lithium

Patents Pending.

*Carabiner is non-load bearing.

K.E.R.T.™ (KEYRING. EMERGENCY. RESCUE. TOOL)

Designed by Ray Kirk in Tahlequah, Oklahoma



- Keychain Micro-Tool
- Seat Belt Strap Cutter w/Vinyl Slip Sheath
- Bottle Opener, Flat Screwdriver, Wrenches

2055

Seat Belt Strap Cutter, Oxygen Tank Wrench, 1/4" Wrench, Bottle Opener, Flat Screw Driver

Length: 2.480" (63 mm)
 Thickness: 0.100" (2.5 mm)
 Material: 8Cr13MoV, 58-59 HRC
 Weight: 0.8 oz. (23 g)

CRKT® MICRO TOOL & KEYCHAIN SHARPENER

Designed by Tom Stokes in Williamsburg, Virginia



- Seat Belt Strap Cutter
- Field Sharpener
- Bottle Opener

9096

Field Sharpener, Seat Belt Strap Cutter, Flat Screw Driver, Bottle Opener

Length: 3.375" (86 mm)
 Thickness: 0.600" (17 mm)
 Material: Glass-Reinforced Nylon, Stainless Steel
 Weight: 0.6 oz. (17 g)

EXITOOL®

Designed by Russ Kommer in Fargo, North Dakota



- Emergency Seat Belt Strap Cutter
- Tungsten Carbide Side Window Breaker
- L.E.D. Light. Clips Directly on to Seat Belt

9030

Length: 2.750" (69.8 mm)
 Weight: 1.6 oz. (45.4 g)
 Handle: Black Glass-Reinforced Nylon
 Feature: Seat Belt Strap Cutter
 Tungsten Carbide Window Breaker
 L.E.D. Flashlight
 Battery: 3V CR2032 Lithium

U.S. Patent Nos. D642,444 and D642,445

EXITOOL® ORANGE

Designed by Russ Kommer in Fargo, North Dakota



- Emergency Seat Belt Strap Cutter
- Tungsten Carbide Side Window Breaker
- L.E.D. Light. Clips Directly on to Seat Belt

9030S

Length: 2.750" (69.8 mm)
 Weight: 1.6 oz. (45.4 g)
 Handle: ER Orange Glass-Reinforced Nylon
 Feature: Seat Belt Strap Cutter
 Tungsten Carbide Window Breaker
 L.E.D. Flashlight
 Battery: 3V CR2032 Lithium

U.S. Patent Nos. D642,444 and D642,445

CTC RBT™ RANGE BAG TOOL

Designed by Glenn Klecker in Silverton, Oregon



- Utility Knife
- Hex Wrenches for CTC Laser Sight Adjustment
- Fold for Compact Carry

8970

Open: 4.500" (114.3 mm)
 Closed: 2.625" (66.6 mm)
 Weight: 2.8 oz. (79.4 g)

Knife Blade
 Length: 1.875" (47.6 mm)
 Edge: Combination w/Triple Point™ Serrations
 Thickness: 0.072" (1.83 mm)
 Finish: Satin
 Steel: 5Cr13, 51-53 HRC
 Handle: Polypropylene
 Style: Slip Joint

Features: Bottle Cap Opener, Flat Blade Driver, Phillips Driver, 0.028" & 0.050" HEX Wrenches

CTC PICATINNY TOOL™**8975**

Open: 6.750" (171.4 mm)
 Closed: 4.000" (101.6 mm)
 Weight: 4.7 oz. (133.0 g)

Knife Blade
 Length: 2.750" (69.8 mm)
 Edge: Combination w/Triple Point™ Serrations
 Thickness: 0.113" (2.8 mm)
 Finish: Black Oxide
 Steel: 8Cr14MoV, 58-59 HRC
 Handle: Polypropylene
 Style: Locking Liner

Features: Flat Blade Driver, Phillips Driver
 0.028" & 0.050" HEX Wrenches, 8mm Wrench, Scraper, T20 Bit, Ejector Pin
 3/32 HEX"

- Utility Knife with Triple Point™ Serrations
- Flat and Phillips Drivers
- Hex Driver w/Four Bits, Scraper, Ejector Pin

NEW**BT-70™**

Designed by Bob Terzuola in Albuquerque, New Mexico

**7460**

Blade:

Length: 4.030" (102.3 mm)

Edge: Plain

Steel: AUS8, 57-59 HRC

Finish: Silver Stonewash

Thickness: 0.150" (3.8 mm)

Closed:

5.159" (131.03 mm)

Open:

9.190" (233.4 mm)

Weight:

7.6 oz. (215.0 g)

Handle:

G10 w/Terzuola Dragon

Style:

Folding Knife w/Locking Liner

- Bob Terzuola's 70th Birthday Commemorative Design
- Stonewash Blade Finish
- Black G10 Handle with Dragon Feature

NEW**SHIZUKA NOH KEN™**

Designed by James Williams in Encinitas, California

**2926**

Blade:

Length: 3.625" (92.0 mm)

Edge: Plain

Steel: AUS 8, 57-59 HRC

Finish: Black Corrosion Resistant Coating

Thickness: 0.150" (3.8 mm)

Closed:

4.550" (115.6 mm)

Open:

8.250" (209.5 mm)

Weight:

4.2 oz. (119.0 g)

Handle:

G10

Style:

Folding Knife w/Frame Lock

U.S. Patent No. 5,596,808

- LAWKS® Safety
- Clip Point Blade Style Designed for Maximum Penetration
- G10 Handle w/Frame Lock

NEW**YUKANTO™**

Designed by James Williams in Encinitas, California

**2930**

Blade:

Length: 4.540" (115.0 mm)

Edge: Plain

Steel: AUS 8, 58-59 HRC

Finish: Black Powder Coating

Thickness: 0.150" (3.8 mm)

Open:

8.690" (220.7 mm)

Weight:

4.1 oz. (116.0 g)

Handle:

Black G10

Style:

Fixed Blade Knife w/Sheath

Sheath:

Material: Glass-Reinforced Nylon

Weight: 1.6 oz. (45.0 g)

- Clip Point Blade Style Designed for Maximum Penetration
- G10 Handle with Textured Grip
- Glass-Reinforced Nylon Sheath with Molle Compatible J-Hook Clip

HEIHO™

Designed by James Williams in Encinitas, California

**2900**

Blade:

Length: 3.125" (79.3 mm)

Edge: Plain

Steel: 8Cr14MoV, 58-59 HRC

Finish: Satin

Thickness: 0.122" (3.0 mm)

Closed:

4.000" (101.6 mm)

Open:

7.000" (177.8 mm)

Weight:

3.6 oz. (102.0 g)

Handle:

G10

Style:

Folding Knife w/Locking Liner

U.S. Patent No. 5,596,808

- OutBurst® Assisted Opening
- LAWKS® Safety
- G10 Handles

HEIHO™ WITH VEFF SERRATIONS™

Designed by James Williams in Encinitas, California



- OutBurst® Assisted Opening
- LAWKS® Safety
- Veff Serrations™

2901

Blade: Length: 3.125" (79.3 mm)
 Edge: Combination
 Steel: 8Cr14MoV, 58-59 HRC
 Finish: Satin
 Thickness: 0.122" (3.0 mm)
 Closed: 4.000" (101.6 mm)
 Open: 7.000" (177.8 mm)
 Weight: 3.6 oz. (102.0 g)
 Handle: G10
 Style: Folding Knife w/Locking Liner

U.S. Patent Nos. 5,596,808 and D559,939

OTANASHI NOH KEN™

Designed by James Williams in Encinitas, California



- Clip Point Blade Style Designed for Maximum Penetration
- LAWKS® Safety
- G10 Handle with Textured Grip

2906

Blade: Length: 4.520" (114.8 mm)
 Edge: Plain
 Steel: AUS 8, 58-59 HRC
 Finish: Black Corrosion Resistant Coating
 Thickness: 0.160" (4.0 mm)
 Closed: 6.400" (162.5 mm)
 Open: 10.130" (257.3 mm)
 Weight: 6.4 oz. (181.0 g)
 Handle: G10
 Style: Folding Knife w/Frame Lock

U.S. Patent No. 5,596,808

OTANASHI NOH KEN™ WITH VEFF SERRATIONS™

Designed by James Williams in Encinitas, California



- Clip Point Blade Style Designed for Maximum Penetration
- LAWKS® Safety
- Veff Serrations™

2916

Blade: Length: 4.520" (114.8 mm)
 Edge: Combination
 Steel: AUS 8, 58-59 HRC
 Finish: Black Corrosion Resistant Coating
 Thickness: 0.160" (4.0 mm)
 Closed: 6.400" (162.5 mm)
 Open: 10.130" (257.3 mm)
 Weight: 6.4 oz. (181.0 g)
 Handle: G10
 Style: Folding Knife w/Frame Lock

U.S. Patent Nos. 5,596,808 and D559,939

HISSATSU™ FOLDER

Designed by James Williams in Encinitas, California



- OutBurst® Assisted Opening
- AutoLAWKS™ Safety
- Glass-Reinforced Nylon Handles

2903

Blade: Length: 3.875" (98.4 mm)
 Edge: Plain
 Steel: AUS 8, 58-59 HRC
 Finish: Black Corrosion Resistant Coating
 Thickness: 0.160" (4.0 mm)
 Closed: 5.000" (127.0 mm)
 Open: 8.750" (222.2 mm)
 Weight: 5.8 oz. (164.0 g)
 Handle: Glass-Reinforced Nylon
 Style: Folding Knife w/Locking Liner

U.S. Patent Nos. 5,596,808 and 7,437,822

HISSATSU™ FIXED BLADE BLACK

Designed by James Williams in Encinitas, California



- Black Non-Reflective EDP Blade Finish
- Textured Rubber Handle Grip w/Polypropylene Core
- Glass-Reinforced Molle Compatible Sheath

2907K

Blade:

Length: 7.125" (180.9 mm)
 Edge: Plain
 Steel: 440A, 55-57 HRC
 Finish: Black EDP
 Thickness: 0.200" (5.0 mm)

Overall:

12.250" (311.1 mm)

Weight:

8.0 oz. (227.0 g)

Handle:

Polypropylene Core w/Textured
 Rubber Grip

Style:

Fixed Blade Knife w/Sheath

Sheath:

Material: Glass-Reinforced Nylon
 Weight: 3.6 oz. (102.0 g)

HISSATSU™ FIXED BLADE TRAINER

Designed by James Williams in Encinitas, California



- Aluminum Plain Edge Blade - Dull
- Textured Rubber Handle Grip

2907T

Blade:

Length: 7.125" (180.9 mm)
 Edge: Dull Plain

Handle:

Material: Aluminum

Weight:

Blue w/Textured Rubber Grip
 4.1 oz. (116.0 g)

SAKIMORI™

Designed by James Williams in Encinitas, California



- Full Tang, Dual Grind, Premium High Carbon Steel Blade
- Traditional Style Cord-Wrapped Handle w/Ray Skin Underlay
- Kydex® Sheath w/Molle Compatible Convertible Belt Clip System

2913

Blade:

Length: 5.760" (146.3 mm)
 Edge: Plain
 Steel: 01 Tool Steel, 56-58 HRC
 Finish: Satin
 Thickness: 0.240" (6.0 mm)

Overall:

10.500" (266.7 mm)

Weight:

9.1 oz. (258.0 g)

Handle:

Cord-Wrapped w/Ray Skin Underlay

Style:

Fixed Blade Knife w/Sheath

Sheath:

Material: Kydex®
 Weight: 3.4 oz. (96.4 g)

U.S. Patent No. 7,007,352

SHINBU™

Designed by James Williams in Encinitas, California



- Full Tang, Dual Grind, Premium High Carbon Steel Blade
- Traditional Style Cord-Wrapped Handle w/Ray Skin Underlay
- Kydex® Sheath w/Molle Compatible Convertible Belt Clip System

2915

Blade:

Length: 9.250" (234.9 mm)
 Edge: Plain
 Steel: YK-30, 57-59 HRC
 Finish: Satin
 Thickness: 0.233" (5.9 mm)

Overall:

14.750" (374.7 mm)

Weight:

13.3 oz. (377.0 g)

Handle:

Cord-Wrapped w/Ray Skin Underlay

Style:

Fixed Blade Knife w/Sheath

Sheath:

Material: Kydex®
 Weight: 6.7 oz. (190.0 g)

U.S. Patent No. 7,007,352

HISSHOU®

Designed by James Williams in Encinitas, California



- Full Tang, Dual Grind, Premium High Carbon Steel Blade
- Traditional Style Cord-Wrapped Handle w/Ray Skin Underlay
- Kydex® Sheath w/Molle Compatible Convertible Belt Clip System

2910

Blade: Length: 13.000" (330.2 mm)
Edge: Plain
Steel: YK-30, 57-59 HRC
Finish: Satin
Thickness: 0.260" (6.6 mm)
Overall: 18.380" (466.9 mm)
Weight: 16.4 oz. (464.9 g)
Handle: Cord-Wrapped w/Ray Skin Underlay
Style: Fixed Blade Knife w/Sheath
Sheath: Material: Kydex®
Weight: 6.7 oz. (190.0 g)

U.S. Patent No. 7,007,352

WILLIAMS TACTICAL PEN

Designed by James Williams in Encinitas, California



- 6061 Aluminum
- Black Non-Reflective Finish
- Low Profile

TPENWK

Length: 6.000" (152.4 mm)
Weight: 1.2 oz. (34.0 g)
Finish: Non-Reflective Black Anodized
Handle: 6061 Aluminum

**WILLIAMS PERSONAL DEFENSE FLASHLIGHT**

Designed by James Williams in Encinitas, California



- Durable Aluminum w/Removable Clip
- Black Anodized Finish
- Multiple Light Modes w/SOS Feature

F1000

Length: 4.260" (108.2 mm)
Weight: 2.9 oz. (82.2 g)
Handle: Aluminum w/Black Anodized Finish
Features: High Mode: 100 Lumens
Low Modes: 3, 10, 50 Lumens (1) AA
Removable Wire Clip

WILLIAMS TACTICAL APPLICATIONS FLASHLIGHT

Designed by James Williams in Encinitas, California



- Durable Aluminum w/Removable Clip
- Black Anodized Finish
- Multiple Light Modes w/SOS Feature

F1010

Length: 4.840" (122.9 mm)
Weight: 3.1 oz. (87.9 g)
Handle: Aluminum w/Black Anodized Finish
Features: High Mode: 320 Lumens
Low Modes: 3, 10, 75 Lumens (2) CR123A
Removable Wire Clip

ULTIMA™

Designed by Michael Martinez in Albuquerque, New Mexico



- Black Titanium Nitride Finish
- Veff Serrations™ w/Injection Molded Ooze Groove Grip Handle
- Reinforced Nylon Molle Compatible Sheath w/Insert

2125KV

Blade: Length: 4.950" (125.7 mm)
Edge: Combination w/Veff Serrations™
Steel: 1.4116, 55-57 HRC
Finish: Black Titanium Nitride
Thickness: 0.180" (4.5 mm)
Overall: 10.039" (255.0 mm)
Weight: 8.4 oz. (238.0 g)
Handle: Injection Molded Glass-Reinforced Nylon
Style: Fixed Blade Knife w/Sheath
Sheath: Material: Nylon w/Glass-Reinforced Nylon Insert
Weight: 5.7 oz. (162.0 g)

U.S. Patent No. D559,939

F.T.W.S.® FOR THOSE WHO SERVE®

Designed by Allen Elisewitz in Lenoir City, Tennessee



- Dual Plain Edge in Black Powder Coat
- Textured Glass-Reinforced Nylon Handle for Exceptional Grip
- Reinforced Nylon Molle Compatible Sheath w/Insert

2060

Blade: Length: 6.300" (160.0 mm)
Edge: Dual Plain
Steel: SK5, 57-58 HRC
Finish: Black Powder Coat
Thickness: 0.230" (5.8 mm)
Overall: 11.630" (295.4 mm)
Weight: 10.8 oz. (306.2 g)
Handle: Textured Glass-Reinforced Nylon
Style: Fixed Blade Knife w/Sheath
Sheath: Material: Reinforced Nylon w Glass-Reinforced Nylon Insert
Weight: 7.5 oz. (213.0 g)

NO BOTHER™

Designed by Ryan Johnson of RMJ Tactical in Chattanooga, Tennessee



- Black Stonewash Finish
- ABS Black Handle Grips
- Injection Molded Molle Compatible Sheath

2741

Blade: Length: 2.190" (55.6 mm)
Edge: Plain
Steel: 8Cr13MoV, 58-60 HRC
Finish: Black Oxide Stonewash
Thickness: 0.180" (4.5 mm)
Overall: 5.290" (134.3 mm)
Weight: 2.2 oz. (62.4 g)
Handle: ABS Black
Style: Fixed Blade Knife w/Sheath
Sheath: Material: Polypropylene Base w Clip / Molle Compatible
Weight: 1.8 oz. (51.0 g)

CHOGAN™ T-HAWK

Designed by Ryan Johnson of RMJ Tactical in Chattanooga, Tennessee



- SK5 Carbon Steel w/Hammer
- Glass-Reinforced Nylon Handles with Textured Grip
- Molle Compatible Kydex® Sheath w/Buckle Strap

2720

Blade: Length: 2.930" (74.4 mm)
Edge: Axe Front Dual Plain Edge w Hammer
Steel: SK5 Carbon Steel, 54-55 HRC
Finish: Black Powder Coat
Thickness: 0.230" (5.8 mm)
Overall: 14.000" (355.6 mm)
Weight: 1lb. 8.6 oz. (697.4 g)
Handle: Glass-Reinforced Nylon w/EDM Finish
Style: Fixed Blade w/Sheath
Sheath: Material: Kydex® / Molle Compatible
Weight: 3.6 oz. (102.0 g)

KANGEE™ T-HAWK

Designed by Ryan Johnson of RMJ Tactical in Chattanooga, Tennessee



- SK5 Carbon Steel w/Spike
- Glass-Reinforced Nylon Handles with Textured Grip
- Molle Compatible Kydex® Sheath w/Buckle Strap

2725

Blade: Length: 2.930" (74.4 mm)
Edge: Axe Front Dual Plain Edge w/ Spike
Steel: SK5 Carbon Steel, 54-55 HRC
Finish: Black Powder Coat
Thickness: 0.230" (5.8 mm)

Overall: 13.750" (349.2 mm)
Weight: 1lb. 8.4 oz. (691.7 g)
Handle: Glass-Reinforced Nylon w/EDM Finish
Style: Fixed Blade w/Sheath

Sheath: Material: Kydex® / Molle Compatible
Weight: 3.6 oz. (102.0 g)

FE7™

Designed by Jim Hammond in Birmingham, Alabama



- O1 Tool Steel with Dual Plain Edge
- Black Corrosion Resistant Powder Coat
- G10 Handle w/Glass-Reinforced Molle Compatible Sheath

2208

Blade: Length: 7.380" (187.4 mm)
Edge: Dual Plain
Steel: O1 Tool Steel, 56-58 HRC
Finish: Black Powder Coat
Thickness: 0.240" (6.0 mm)

Overall: 12.500" (317.5 mm)
Weight: 13.3 oz. (377.0 g)
Handle: G10
Style: Fixed Blade Knife w/Sheath

Sheath: Material: Glass Fiber Reinforced/
Molle Compatible
Weight: 12.7 oz. (360.0 g)

FE9™

Designed by Jim Hammond in Birmingham, Alabama



- O1 Tool Steel with Dual Plain Edge
- Black Corrosion Resistant Powder Coat
- G10 Handle w/Glass-Reinforced Molle Compatible Sheath

2210

Blade: Length: 9.000" (228.6 mm)
Edge: Dual Plain
Steel: O1 Tool Steel, 56-58 HRC
Finish: Black Powder Coat
Thickness: 0.230" (5.8 mm)

Overall: 14.130" (358.9 mm)
Weight: 15.2 oz. (430.9 g)
Handle: G10
Style: Fixed Blade Knife w/Sheath

Sheath: Material: Glass Fiber Reinforced/
Molle Compatible
Weight: 15.7 oz. (445.1 g)

FE9™ TRAINER

Designed by Jim Hammond in Birmingham, Alabama



- Thermo Plastic Rubber
- Fixed Blade Training Knife

2210T

Blade: Length: 9.000" (228.6 mm)
Edge: Dull Plain

Material: Thermo Plastic Rubber
Handle: Black Thermo Plastic Rubber
Weight: 4.8 oz. (136.0 g)

FORESIGHT™

Designed by Ken Onion in Kaneohe, Hawaii



- IKBS™ Ball Bearing Pivot System
- Black Titanium Nitride Finish
- Grooved Aluminum Handle for Exceptional Grip

K220KKP

Blade: Length: 3.500" (88.9 mm)
 Edge: Plain
 Steel: AUS 8, 58-59 HRC
 Finish: Black Titanium Nitride
 Thickness: 0.160" (4.0 mm)
 Closed: 5.170" (131.3 mm)
 Open: 8.690" (220.7 mm)
 Weight: 6.3 oz. (179.0 g)
 Handle: Aluminum
 Style: Folding Knife w/Locking Liner

FORESIGHT™ WITH TRIPLE POINT™ SERRATIONS

Designed by Ken Onion in Kaneohe, Hawaii



- IKBS™ Ball Bearing Pivot System
- Black Titanium Nitride Finish w/ Triple Point™ Serrations
- Grooved Aluminum Handle for Exceptional Grip

K220KKS

Blade: Length: 3.500" (88.9 mm)
 Edge: Combination
 Steel: AUS 8, 58-59 HRC
 Finish: Black Titanium Nitride
 Thickness: 0.160" (4.0 mm)
 Closed: 5.170" (131.3 mm)
 Open: 8.690" (220.7 mm)
 Weight: 6.3 oz. (179.0 g)
 Handle: Aluminum
 Style: Folding Knife w/Locking Liner

Available in Clam Pack as K220KKSC

NEW**DRUMFIRE™**

Designed by Pat and Wes Crawford in West Memphis, Arkansas



- Lightweight Fixed Blade Neck Knife
- Quick Release Lanyard
- Gear Compatible Sheath w/J-Hook Clip

2031

Blade: Length: 2.270" (57.6 mm)
 Edge: Plain
 Steel: 8Cr13MoV, 56-58 HRC
 Finish: Bead Blast
 Thickness: 0.110" (2.8 mm)
 Overall: 5.750" (146.1 mm)
 Weight: 1.7 oz. (48.2 g)
 Handle: Stainless Steel
 Style: Fixed Blade Knife w/Sheath
 Sheath: Material: Glass-Reinforced Nylon/
 J-Hook, Molle Compatible
 Weight: 1.2 oz. (34.0 g)

NEW**THUNDER STRIKE™**

Designed by Pat and Wes Crawford in West Memphis, Arkansas



- Black Corrosion Resistant Blade Coating
- Cord-Wrapped Handle
- Gear Compatible Sheath w/J-Hook Clip

2032

Blade: Length: 2.830" (71.8 mm)
 Edge: Plain
 Steel: 8Cr13MoV, 56-58 HRC
 Finish: Black
 Thickness: 0.140" (3.5 mm)
 Overall: 7.440" (188.9 mm)
 Weight: 3.6 oz. (102.0 g)
 Handle: Cord-Wrapped Stainless Steel
 Style: Fixed Blade Knife w/Sheath
 Sheath: Material: Glass-Reinforced Nylon/
 J-Hook, Molle Compatible
 Weight: 1.4 oz. (40.0 g)

TRIUMPH N.E.C.K.™ (NO-NONSENSE. EMERGENCY. COMPACT. KNIFE.)

Designed by Pat and Wes Crawford in West Memphis, Arkansas



- Lightweight Fixed Blade Neck Knife
- Quick Release Lanyard
- Gear Compatible Sheath

2030

Blade:	Length: 2.750" (81.0 mm)
	Edge: Plain
	Steel: 2Cr13, 51-53 HRC
	Finish: Satin
	Thickness: 0.138" (3.4 mm)
Overall:	6.500" (173.9 mm)
Weight:	2.8 oz. (79.4 g)
Handle:	2Cr13
Style:	Fixed Blade Knife w/Sheath
Sheath:	
Material: Kydex® / Molle Compatible	
Weight: 2.5 oz. (68.0 g)	

TRIUMPH N.E.C.K.™ (NO-NONSENSE. EMERGENCY. COMPACT. KNIFE.) BLACK WITH PARACORD WRAP

Designed by Pat and Wes Crawford in West Memphis, Arkansas



- Black Corrosion Resistant Blade Coating
- Cord-Wrapped Handle
- Gear Compatible Sheath

2030CW

Blade:	Length: 2.750" (81.0 mm)
	Edge: Plain
	Steel: 2Cr13, 51-53 HRC
	Finish: Black EDP
	Thickness: 0.138" (3.4 mm)
Overall:	6.500" (173.9 mm)
Weight:	3.4 oz. (96.4 g)
Handle:	Paracord Wrapped 2Cr13
Style:	Fixed Blade Knife w/Sheath
Sheath:	
Material: Kydex® / Molle Compatible	
Weight: 2.5 oz. (68.0 g)	

STING™

Designed by A.G. Russell in Rogers, Arkansas



- Black Corrosion Resistant Coating
- Dual Edge 1050 Hot Forged Carbon Steel
- Glass-Reinforced Nylon Sheath

2020

Blade:	Length: 3.197" (81.0 mm)
	Edge: Dual Plain
	Steel: 1050, 52-55 HRC
	Finish: Black Powder Coat
	Thickness: 0.137" (3.4 mm)
Overall:	6.850" (173.9 mm)
Weight:	3.9 oz. (111.0 g)
Handle:	Hot Forged 1050 Carbon Steel
Style:	Fixed Blade Knife w/Sheath
Sheath:	
Material: Nylon w/Glass-Reinforced Nylon Insert	
Weight: 2.4 oz. (68.0 g)	

SYNERGIST™

Designed by MJ Lerch in Sussex, Wisconsin



- Dual Edge Satin Finish Blade
- G10 Handle Overlays
- High Quality Leather Sheath w/Boot Clip

2070

Blade:	Length: 3.630" (92.2 mm)
	Edge: Dual Plain
	Steel: 8Cr13MoV, 56-58 HRC
	Finish: Satin
	Thickness: 0.160" (4.0 mm)
Overall:	7.630" (193.8 mm)
Weight:	3.6 oz. (102.0 g)
Handle:	Full Tang w/G10 Overlay
Style:	Fixed Blade Knife w/Sheath
Sheath:	
Material: Leather	
Weight: 1.7 oz. (48.2 g)	

FIRE SPARK™

Designed by Matthew Lerch in Sussex, Wisconsin



- OutBurst® Assisted Opening
- Fire Safe® Thumb Stud Actuation
- LAWKS® Safety

1050

Blade: Length: 3.875" (98.4 mm)
 Edge: Plain
 Steel: 8Cr14MoV, 58-59 HRC
 Finish: Satin
 Thickness: 0.121" (3.0 mm)
 Closed: 4.750" (120.6 mm)
 Open: 8.630" (219.2 mm)
 Weight: 5.3 oz. (150.0 g)
 Handle: Aluminum w/G10 Inlay
 Style: Folding Knife w/Locking Liner

U.S. Patent Nos. 7,918,028 and 5,596,808

FIRE SPARK™ BLACK

Designed by Matthew Lerch in Sussex, Wisconsin



- OutBurst® Assisted Opening
- Fire Safe® Thumb Stud Actuation
- LAWKS® Safety

1050K

Blade: Length: 3.875" (98.4 mm)
 Edge: Plain
 Steel: 8Cr14MoV, 58-59 HRC
 Finish: Black Oxide
 Thickness: 0.121" (3.0 mm)
 Closed: 4.750" (120.6 mm)
 Open: 8.630" (219.2 mm)
 Weight: 5.3 oz. (150.0 g)
 Handle: Aluminum w/G10 Inlay
 Style: Folding Knife w/Locking Liner

U.S. Patent Nos. 7,918,028 and 5,596,808

M16® - 04A AUTOMATIC

Designed by Kit Carson in Vine Grove, Kentucky



- 100% Made in the USA
- Push Button Automatic Opening w/Patented Safety
- Lightweight Black Anodized Aluminum Handles

M16-04A

Blade: Length: 4.000" (101.6 mm)
 Edge: Plain
 Steel: CPM 154, 58-60 HRC
 Finish: Black Matte DLC Coating
 Thickness: 0.160" (4.0 mm)
 Closed: 5.310" (134.8 mm)
 Open: 9.250" (234.9 mm)
 Weight: 5.0 oz. (142.0 g)
 Handle: 6061 Type III Anodized Aluminum
 Style: Folding Knife w/Button Lock

U.S. Patent No. 5,822,866 under license from Mentor Group, LLC.
 The M16-04A is only available through authorized distributors.

The sale of automatic knives is Federally regulated. Always check permissibility within your state or locality as non-Federal personal may be precluded from ownership or use by state laws.

M16® - 13T TITANIUM SPEAR POINT WITH TRIPLE POINT™ SERRATIONS

Designed by Kit Carson in Vine Grove, Kentucky

**M16-13T**

Blade: Length: 3.500" (88.9 mm)
 Edge: Combination
 Steel: AUS 8, 58-59 HRC
 Finish: Bead Blast
 Thickness: 0.100" (2.5 mm)
 Closed: 4.750" (120.6 mm)
 Open: 8.250" (209.5 mm)
 Weight: 3.4 oz. (96.4 g)
 Handle: Titanium
 Style: Folding Knife w/Locking Liner

U.S. Patent Nos. 5,596,808 and 7,437,822

- AutoLAWKS™ Safety
- Triple Point™ Serrations
- Carson Flipper and Titanium Handles

M16® - 14T TITANIUM TANTO WITH TRIPLE POINT™ SERRATIONS

Designed by Kit Carson in Vine Grove, Kentucky



- AutoLAWKS™ Safety
- Triple Point™ Serrations
- Carson Flipper and Titanium Handles

M16-14T

Blade: Length: 3.990" (101.3 mm)
 Edge: Combination
 Steel: AUS 8, 58-59 HRC
 Finish: Bead Blast
 Thickness: 0.140" (3.5 mm)
 Closed: 5.375" (136.5 mm)
 Open: 9.250" (234.9 mm)
 Weight: 5.7 oz. (162.0 g)
 Handle: Titanium
 Style: Folding Knife w/Locking Liner

U.S. Patent Nos. 5,596,808 and 7,437,822
 Available in Clam Pack as M16-14TC

M16® - 12ZLEK TANTO WITH TRIPLE POINT™ SERRATIONS

Designed by Kit Carson in Vine Grove, Kentucky



- AutoLAWKS™ Safety
- Triple Point™ Serrations
- Seat Belt Strap Cutter and Tungsten Carbide Window Breaker

M16-12ZLEK

Blade: Length: 3.000" (76.2 mm)
 Edge: Combination
 Steel: AUS 8, 58-59 HRC
 Finish: Black Titanium Nitride
 Thickness: 0.118" (2.9 mm)
 Closed: 4.375" (111.1 mm)
 Open: 7.310" (185.6 mm)
 Weight: 3.6 oz. (102.0 g)
 Handle: Glass-Reinforced Nylon
 Style: Folding Knife w/Locking Liner

U.S. Patent Nos. 5,596,808, 7,437,822 and D678,456.
 Available in Clam Pack as M16-12ZLEKC

M16® - 13ZLEK SPEAR POINT WITH TRIPLE POINT™ SERRATIONS

Designed by Kit Carson in Vine Grove, Kentucky



- AutoLAWKS™ Safety
- Triple Point™ Serrations
- Seat Belt Strap Cutter and Tungsten Carbide Window Breaker

M16-13ZLEK

Blade: Length: 3.375" (85.7 mm)
 Edge: Combination
 Steel: AUS 8, 58-59 HRC
 Finish: Black Titanium Nitride
 Thickness: 0.118" (2.9 mm)
 Closed: 4.875" (123.8 mm)
 Open: 8.250" (209.5 mm)
 Weight: 3.7 oz. (105.0 g)
 Handle: Glass-Reinforced Nylon
 Style: Folding Knife w/Locking Liner

U.S. Patent Nos. 5,596,808, 7,437,822 and D678,456.
 Available in Clam Pack as M16-13ZLEKC

M16® - 14ZLEK TANTO LARGE WITH TRIPLE POINT™ SERRATIONS

Designed by Kit Carson in Vine Grove, Kentucky



- AutoLAWKS™ Safety
- Triple Point™ Serrations
- Seat Belt Strap Cutter and Tungsten Carbide Window Breaker

M16-14ZLEK

Blade: Length: 3.750" (95.2 mm)
 Edge: Combination
 Steel: AUS 8, 58-59 HRC
 Finish: Black Titanium Nitride
 Thickness: 0.138" (3.5 mm)
 Closed: 5.500" (139.7 mm)
 Open: 9.250" (234.95 mm)
 Weight: 6.2 oz. (176.0 g)
 Handle: Glass-Reinforced Nylon
 Style: Folding Knife w/Locking Liner

U.S. Patent Nos. 5,596,808, 7,437,822 and D678,456.
 Available in Clam Pack as M16-14ZLEKC

M16® - 13SFG SPECIAL FORCES TANTO WITH VEFF SERRATIONS™

Designed by Kit Carson in Vine Grove, Kentucky



- AutoLAWKS™ Safety
- Veff Serrations™
- Dual Hilt Blade Guard w/ G10 Handles

M16-13SFG

Blade:	Length: 3.500" (88.9 mm) Edge: Combination Steel: 8Cr14MoV, 58-59 HRC Finish: Black Titanium Nitride Thickness: 0.120" (3.0 mm)
Closed:	4.750" (120.6 mm)
Open:	8.250" (209.5 mm)
Weight:	4.0 oz. (113.0 g)
Handle:	G10
Style:	Folding Knife w/Locking Liner

U.S. Patent Nos. 5,596,808, 7,437,822 and D559,939
Available in Clam Pack as M16-13SFGC

M16® - 14SFG SPECIAL FORCES TANTO LARGE WITH VEFF SERRATIONS™

Designed by Kit Carson in Vine Grove, Kentucky



- AutoLAWKS™ Safety
- Veff Serrations™
- Dual Hilt Blade Guard w/ G10 Handles

M16-14SFG

Blade:	Length: 3.990" (101.3 mm) Edge: Combination Steel: 8Cr14MoV, 58-59 HRC Finish: Black Titanium Nitride Thickness: 0.140" (3.5 mm)
Closed:	5.375" (136.5 mm)
Open:	9.250" (234.9 mm)
Weight:	5.9 oz. (167.0 g)
Handle:	G10
Style:	Folding Knife w/Locking Liner

U.S. Patent Nos. 5,596,808, 7,437,822 and D559,939
Available in Clam Pack as M16-14SFGC

M16® - 13SF SPECIAL FORCES TANTO WITH TRIPLE POINT™ SERRATIONS

Designed by Kit Carson in Vine Grove, Kentucky



- AutoLAWKS™ Safety
- Triple Point™ Serrations
- Dual Hilt Blade Guard w/ Aluminum Handles

M16-13SF

Blade:	Length: 3.500" (88.9 mm) Edge: Combination Steel: AUS 8, 58-59 HRC Finish: Black Titanium Nitride Thickness: 0.100" (2.5 mm)
Closed:	4.750" (120.6 mm)
Open:	8.250" (209.5 mm)
Weight:	3.5 oz. (99.2 g)
Handle:	Aluminum
Style:	Folding Knife w/Locking Liner

U.S. Patent Nos. 5,596,808 and 7,437,822

M16® - 14SF SPECIAL FORCES TANTO LARGE WITH TRIPLE POINT™ SERRATIONS

Designed by Kit Carson in Vine Grove, Kentucky



- AutoLAWKS™ Safety
- Veff Serrations™
- Dual Hilt Blade Guard w/ Aluminum Handles

M16-14SF

Blade:	Length: 3.990" (101.3 mm) Edge: Combination Steel: AUS 8, 58-59 HRC Finish: Black Titanium Nitride Thickness: 0.140" (3.5 mm)
Closed:	5.375" (136.5 mm)
Open:	9.250" (234.9 mm)
Weight:	5.7 oz. (162.0 g)
Handle:	Aluminum
Style:	Folding Knife w/Locking Liner

U.S. Patent Nos. 5,596,808 and 7,437,822
Available in Clam Pack as M16-14SFC

M21™ - 14SFG SPECIAL FORCES TANTO WITH VEFF SERRATIONS™

Designed by Kit Carson in Vine Grove, Kentucky



- AutoLAWKS™ Safety
- Veff Serrations™
- Dual Hilt Blade Guard w/ G10 Handles

M21-14SFG

Blade: Length: 3.990" (101.3 mm)
 Edge: Combination
 Steel: 8Cr14MoV, 58-59 HRC
 Finish: Black Titanium Nitride
 Thickness: 0.140" (3.5 mm)
 Closed: 5.375" (136.5 mm)
 Open: 9.250" (234.9 mm)
 Weight: 6.1 oz. (173.0 g)
 Handle: G10
 Style: Folding Knife w/Locking Liner

U.S. Patent Nos. 5,596,808, 7,437,822 and D559,939.

M21™ - 14SF SPECIAL FORCES TANTO WITH VEFF SERRATIONS™

Designed by Kit Carson in Vine Grove, Kentucky



- AutoLAWKS™ Safety
- Triple Point™ Serrations
- Dual Hilt Blade Guard w/ Aluminum Handles

M21-14SF

Blade: Length: 3.990" (101.3 mm)
 Edge: Combination
 Steel: AUS 8, 58-59 HRC
 Finish: Black Titanium Nitride
 Thickness: 0.140" (3.5 mm)
 Closed: 5.375" (136.5 mm)
 Open: 9.250" (234.9 mm)
 Weight: 5.7 oz. (162.0 g)
 Handle: Aluminum
 Style: Folding Knife w/Locking Liner

U.S. Patent Nos. 5,596,808, and 7,437,822

M16® - 13DSFG SPECIAL FORCES DESERT TANTO WITH VEFF SERRATIONS™

Designed by Kit Carson in Vine Grove, Kentucky



- AutoLAWKS™ Safety
- Titanium Nitride Blade Finish
- Veff Serrations™

M16-13DSFG

Blade: Length: 3.500" (88.9 mm)
 Edge: Combination
 Steel: 8Cr14MoV, 58-59 HRC
 Finish: Tan Titanium Nitride
 Thickness: 0.120" (3.0 mm)
 Closed: 4.750" (120.6 mm)
 Open: 8.250" (209.5 mm)
 Weight: 4.0 oz. (113.0 g)
 Handle: G10
 Style: Folding Knife w/Locking Liner

U.S. Patent Nos. 5,596,808, 7,437,822 and D559,939.

M16® - 14DSFG SPECIAL FORCES DESERT TANTO LARGE WITH VEFF SERRATIONS™

Designed by Kit Carson in Vine Grove, Kentucky



- AutoLAWKS™ Safety
- Titanium Nitride Blade Finish
- Veff Serrations™

M16-14DSFG

Blade: Length: 3.875" (98.4 mm)
 Edge: Combination
 Steel: 8Cr14MoV, 58-59 HRC
 Finish: Tan Titanium Nitride
 Thickness: 0.140" (3.5 mm)
 Closed: 5.250" (133.3 mm)
 Open: 9.250" (234.9 mm)
 Weight: 5.9 oz. (167.0 g)
 Handle: G10
 Style: Folding Knife w/Locking Liner

U.S. Patent Nos. 5,596,808, 7,437,822 and D559,939.

M21™ - 12GD DROP POINT WITH VEFF SERRATIONS™

Designed by Kit Carson in Vine Grove, Kentucky



- AutoLAWKS™ Safety
- Titanium Nitride Blade Finish
- Veff Serrations™

M21-12GD

Blade: Length: 3.125" (79.3 mm)
 Edge: Combination
 Steel: 8Cr14MoV, 58-59 HRC
 Finish: Tan Titanium Nitride
 Thickness: 0.120" (3.0 mm)
 Closed: 4.250" (107.9 mm)
 Open: 7.250" (184.1 mm)
 Weight: 3.8 oz. (108.0 g)
 Handle: G10
 Style: Folding Knife w/Locking Liner

U.S. Patent Nos. 5,596,808, 7,437,822 and D559,939.

M21™ - 14DSFG SPECIAL FORCES DROP POINT WITH VEFF SERRATIONS™

Designed by Kit Carson in Vine Grove, Kentucky



- AutoLAWKS™ Safety
- Titanium Nitride Blade Finish
- Veff Serrations™

M21-14DSFG

Blade: Length: 3.990" (101.3 mm)
 Edge: Combination
 Steel: 8Cr14MoV, 58-59 HRC
 Finish: Tan Titanium Nitride
 Thickness: 0.140" (3.5 mm)
 Closed: 5.250" (133.3 mm)
 Open: 9.250" (234.9 mm)
 Weight: 6.1 oz. (173.0 g)
 Handle: G10 w/Dual Hilt
 Style: Folding Knife w/Locking Liner

U.S. Patent Nos. 5,596,808, 7,437,822 and D559,939.

M16® - 13ZM DESERT SPEAR POINT WITH TRIPLE POINT™ SERRATIONS

Designed by Kit Carson in Vine Grove, Kentucky



- AutoLAWKS™ Safety
- Triple Point™ Serrations
- Glass-Reinforced Nylon Handles w/Carson Flipper

M16-13ZM

Blade: Length: 3.500" (88.9 mm)
 Edge: Combination
 Steel: AUS 4, 55-57 HRC
 Finish: Bead Blast
 Thickness: 0.100" (2.5 mm)
 Closed: 4.750" (120.6 mm)
 Open: 8.250" (209.5 mm)
 Weight: 3.5 oz. (99.2 g)
 Handle: Glass-Reinforced Nylon
 Style: Folding Knife w/Locking Liner

U.S. Patent Nos. 5,596,808 and 7,437,822.
 Available in Clam Pack as M16-13ZMC

M16® - 14ZSF DESERT TANTO WITH TRIPLE POINT™ SERRATIONS

Designed by Kit Carson in Vine Grove, Kentucky



- AutoLAWKS™ Safety
- Triple Point™ Serrations
- Glass-Reinforced Nylon Handles w/Dual Hilt

M16-14ZSF

Blade: Length: 3.990" (101.35 mm)
 Edge: Combination
 Steel: AUS 8, 58-59 HRC
 Finish: Bead Blast
 Thickness: 0.140" (3.5 mm)
 Closed: 5.375" (136.5 mm)
 Open: 9.250" (234.9 mm)
 Weight: 6.3 oz. (179.0 g)
 Handle: Glass-Reinforced Nylon w/Dual Hilt
 Style: Folding Knife w/Locking Liner

U.S. Patent Nos. 5,596,808 and 7,437,822.
 Available in Clam Pack as M16-14ZSFC

M16® - 14D DESERT TANTO COPPER WITH TRIPLE POINT™ SERRATIONS

Designed by Kit Carson in Vine Grove, Kentucky



- AutoLAWKS™ Safety
- Triple Point™ Serrations
- Glass-Reinforced Nylon Handles w/Carson Flipper

M16-14D

Blade: Length: 3.990" (101.35 mm)
 Edge: Combination
 Steel: AUS 8, 58-59 HRC
 Finish: Copper Titanium Nitride
 Thickness: 0.140" (3.5 mm)
 Closed: 5.375" (136.5 mm)
 Open: 9.250" (234.9 mm)
 Weight: 6.3 oz. (179.0 g)
 Handle: Aluminum
 Style: Folding Knife w/Locking Liner

U.S. Patent Nos. 5,596,808 and 7,437,822.
 Available in Clam Pack as M16-14DC

BEAR CLAW™ E.R.

Designed by Russ Kommer in Fargo, North Dakota



- Blunt Tip w/ Triple Point™ Serrations
- Mirror Polish Blade Finish
- Emergency Orange Glass-Reinforced Nylon Handle

2510ER

Blade: Length: 2.375" (60.3 mm)
 Edge: Blunt Tip w/Triple Point™ Serrations
 Steel: AUS 4, 55-57 HRC
 Finish: Mirror Polish
 Thickness: 0.130" (3.3 mm)
 Overall: 5.750" (146.0 mm)
 Weight: 3.4 oz. (96.4 g)
 Handle: ER Orange Glass-Reinforced Nylon
 Style: Fixed Blade Knife w/Sheath

Sheath: Material: Glass-Reinforced Nylon
 Weight: 1.1 oz. (31.2 g)

M16® - 12ZE E.R. EMERGENCY RESCUE TANTO WITH TRIPLE POINT™ SERRATIONS

Designed by Kit Carson in Vine Grove, Kentucky



- AutoLAWKS™ Safety
- Triple Point™ Serrations
- Seat Belt Strap Cutter and Tungsten Carbide Window Breaker

M16-12ZE

Blade: Length: 3.000" (76.2 mm)
 Edge: Combination
 Steel: AUS 8, 58-59 HRC
 Finish: Satin
 Thickness: 0.118" (2.9 mm)
 Closed: 4.375" (111.1 mm)
 Open: 7.375" (187.3 mm)
 Weight: 3.6 oz. (102.0 g)
 Handle: ER Orange Glass-Reinforced Nylon
 Style: Folding Knife w/Locking Liner

U.S. Patent Nos. 5,596,808, 7,437,822 and D678,456

M16® - 13ZE E.R. EMERGENCY RESCUE SPEAR POINT WITH TRIPLE POINT™ SERRATIONS

Designed by Kit Carson in Vine Grove, Kentucky



- AutoLAWKS™ Safety
- Triple Point™ Serrations
- Seat Belt Strap Cutter and Tungsten Carbide Window Breaker

M16-13ZE

Blade: Length: 3.375" (85.7 mm)
 Edge: Combination
 Steel: AUS 8, 58-59 HRC
 Finish: Satin
 Thickness: 0.118" (2.9 mm)
 Closed: 4.875" (123.8 mm)
 Open: 8.250" (209.5 mm)
 Weight: 3.7 oz. (105.0 g)
 Handle: ER Orange Glass-Reinforced Nylon
 Style: Folding Knife w/Locking Liner

U.S. Patent Nos. 5,596,808, 7,437,822 and D678,456

M16™-14ZER EMERGENCY RESCUE TANTO LARGE WITH TRIPLE POINT™ SERRATIONS

Designed by Kit Carson in Vine Grove, Kentucky



- AutoLAWKS™ Safety
- Triple Point™ Serrations
- Seat Belt Strap Cutter and Tungsten Carbide Window Breaker

M16-14ZER

Blade:	Length: 3.750" (95.2 mm)
	Edge: Combination
	Steel: AUS 8, 58-59 HRC
	Finish: Satin
	Thickness: 0.138" (3.5 mm)
Closed:	5.500" (139.7 mm)
Open:	9.250" (234.9 mm)
Weight:	6.2 oz. (176.0 g)
Handle:	ER Orange Glass-Reinforced Nylon
Style:	Folding Knife w/Locking Liner

U.S. Patent Nos. 5,596,808, 7,437,822 and D678,456

KANGEE™ T-HAWK EMERGENCY RESCUE

Designed by Ryan Johnson of RMJ Tactical in Chattanooga, Tennessee



- SK5 Carbon Steel w/Spike
- Glass-Reinforced Nylon Handles with Textured Grip
- Molle Compatible Kydex® Sheath w/Buckle Strap

2725ER

Blade:	Length: 2.930" (74.4 mm)
	Edge: Axe Front Dual Plain Edge w Spike
	Steel: SK5 Carbon Steel, 54-55 HRC
	Finish: Black Powder Coat
	Thickness: 0.230" (5.8 mm)
Overall:	13.750" (349.2 mm)
Weight:	1 lb. 8.4 oz. (691.7 g)
Handle:	ER Orange Glass-Reinforced Nylon
Style:	Fixed Blade w/Sheath
Sheath:	Material: Kydex® / Molle Compatible
	Weight: 3.6 oz. (102.0 g)

TAO™ TACTICAL PEN BLACK

Designed by Allen Elishewitz in Lenoir City, Tennessee



- Non-Reflective Black
- 6061 Aluminum
- Comes w/a Nylon Fabric Case

TPENAK:

Pen:	Length: 5.750" (146.0 mm)
Diameter:	0.630" (16.0 mm)
Weight:	1.7 oz. (48.2 g)
Handle:	6061 Aluminum
Refill:	Fisher Space Pen® Refill #PR4

**TAO™ TACTICAL PEN OLIVE DRAB**

Designed by Allen Elishewitz in Lenoir City, Tennessee



- Non-Reflective Olive Drab
- 6061 Aluminum
- Comes w/a Nylon Fabric Case

TPENAOD:

Pen:	Length: 5.750" (146.0 mm)
Diameter:	0.630" (16.0 mm)
Weight:	1.7 oz. (48.2 g)
Handle:	6061 Aluminum
Refill:	Fisher Space Pen® Refill #PR4



TAO® TACTICAL PEN BLACK WITH BRIGHT GROOVES

Designed by Allen Elishewitz in Lenoir City, Tennessee



- Black w/Bright Visibility Grooves
- 6061 Aluminum
- Comes w/a Nylon Fabric Case

TPENAKS:

Black w/Bright Grooves
 Pen: Length: 5.750" (146.0 mm)
 Diameter: 0.630" (16.0 mm)
 Weight: 1.7 oz. (48.2 g)
 Handle: 6061 Aluminum
 Refill: Fisher Space Pen® Refill #PR4

**HOOK & LOOP TOOL**

Designed by Trip Felton in Phoenix, Arizona



- VELCRO® Cleaner includes Boot Pick
- Wire Side Brush to Clean Hooks
- Soft Side Brush to Clean Loops

9900

Closed: 4.310" (109.5 mm)
 Open: 6.500" (165.1 mm)
 Thickness: 1.370" (34.8 mm)
 Weight: 3.4 oz. (96.4 g)
 Features: Wire Brush to Clean Hook Side
 Soft Brush to Clean Loop Side
 To Clean Wire Brush, Use Soft Side Brush
 Includes a Boot Pick
 Handle: Durable Glass-Reinforced Nylon
 Style: Multi-Tool

U.S. Patent No. 8,695,147

VELCRO® is a registered trademark of Velcro Industries B. V.

MOLLE-LOK™

Designed by Blade-Tech™ Design



- Blade Tech Design Molle-Lok™
- Pack of 2

9800

Open: 7.630" (193.8 mm)
 Thickness: 0.130" (3.3 mm)
 Weight: 0.5 oz. (14.2 g)

Molle-Lok is a trademark of Blade-Tech Industries, Inc.

U.S. Patent No. 6,145,169

VEFF SHARP™

Designed by Tom Veff, "Edgeologist" in Oregon City, Oregon

**VEFF1**

Rod 1: Length: 6.380" (162.05 mm)
 Rod 2: Length: 5.880" (149.35 mm)
 Weight: 4.9 oz. (139.0 g)
 Grit: 600 Diamond
 Handle: Knurled Aluminum for Grip
 Sheath: Reinforced Nylon

Available in Clam Pack as VEFF1. Veff Serrations™

U.S. Patent No. D559,939

- Portable, Multi-Purpose Field and Bench Sharpener
- 600 Diamond Grit
- Reinforced Nylon Sheath

NATHAN'S KNIFE KIT

Designed by Nathan and Glenn Klecker in Silverton, Oregon



- Wood Knife Kit
- Teach Knife Safety and Responsibility
- Family Craft Project Recommended for Kids 7 and Up

1032

Blade:	Length: 3.250" (82.5 mm)
Material:	Beech Wood
Overall:	8.000" (203.2 mm)
Weight:	1.8 oz. (51.0 g)
Handle:	Beech Wood
Style:	Folder w/Lockback Safety

COMPANY BILLBOARDS

Knives and tools are perfect for custom logos, awards, premiums, and gifts. CRKT® delivers affordable, quality, promotional items, for your corporate or specialty needs. These days it helps to have that competitive "edge" in the marketplace by making your company stand out from others. Having a quality tool to create a lasting impression is easy with our custom marking program.

Many CRKT® models can be imprinted with your company name, logo, or promotional theme to promote your product or service. A variety of durable imprint colors is available for detailed printing of your unique identity on the blade, handle, or sheath. Blades and metallic handles can also be decorated with finely detailed laser engraving.

CRKT® knives are something that get used in many ways every day, so you can be sure that they will not be put away in some drawer; rather, they'll be a constant, visible reminder of your company brand for years to come. They are meaningful tools that the recipient will surely appreciate. For those looking to add a great accessory product to their line, what better complement to your products or services than one of humankind's most essential tools?

CRKT® can help you get the design, build, and price point that fits your objective. If you are interested in using CRKT® products for your company's needs, please contact us with company information and your imprint/product specifications. We will deliver your distinctive, premium, customized items in time for your next main event.



LIFETIME WARRANTY

This warranty covers any defects in materials or workmanship. If one of our knives ever breaks or fails because of material or manufacturing defect, we'll replace the knife.

This warranty runs as long as you own your knife. Coverage ends if you sell or otherwise transfer the knife to someone else, or if your CRKT® knife is modified in any way.

This warranty does not cover breakage or failure due to misuse of the knife. Knives as good as ours rarely break or fail because of a defect. Usually they break or fail from what we call "tool abuse"—using them for unsuitable tasks like prying or pounding. Therefore, blade tip breakage is not covered by our warranty. Use of a knife for any purpose other than cutting voids the warranty. So please match the tool to the task, and use your knife only for cutting. The knife will last longer, and you'll be safer too. This warranty does not cover failure of mechanisms due to your failure to properly maintain them.

Misuse of your knife can cause serious injury or even death. It can also cause your knife to break or fail and the warranty will not apply. Failure to properly maintain your knife also may cause its mechanisms not to function properly, which could result in injury to you or damage to the knife.

Finally, consequential and incidental damages are not recoverable under this warranty. Some states do not allow the exclusion or limitation of consequential damages, so this exclusion or limitation may not apply to you.

Limited Accessory Warranty

CRKT® accessories, including deployment systems, carry systems, and sharpeners, have a one-year limited warranty against defects in material or manufacturing.

Limited Electronics Warranty

The electronic portion of CRKT® products, including L.E.D. systems, are covered by a 90-day limited warranty from the date of purchase to the original purchaser. Warranty claims must be accompanied by proof of purchase.

SPECIFICATIONS

Colors and textures in all products are as close as modern reproduction processes permit, but variations may occur in finishing processes such as anodizing and titanium nitride coating, in our swirled CPL scales, G10, and in other natural materials such as leather, horn, and wood.

We recommend you visit your local retailer and view CRKT® products under natural lighting conditions to ensure complete satisfaction. Blade lengths in this catalog are measured according to the American Knife and Tool Institute guidelines. For simplicity, we give the weight of models with a plain edge. Models with serrations will weigh a fraction of an ounce less. Specifications on products are subject to change without notice and can also be viewed on CRKT.com.

The Columbia River Knife & Tool name, Columbia River Knife & Tool logo, CRKT name, CRKT Logo, Confidence in Hand, CRKT Confidence in Hand Logo, AutoLAWKS, LAWKS, ILS, L.B.S., OutBurst, Fire Safe, ExiTool, Fire Spark, Tao, Veff Sharp, Eat'N Tool, Ignitor, RSK Mk5, Minimalist, 2-Shot, Hisshou, Lake 111, Guppie, Zilla-Tool, Pazoda, F.T.W.S., For Those Who Serve, Get-A-Way Driver, When Seconds Matter, Sting, K.I.S.S., P.E.C.K., M4, M16, M21, Brow Tine, Bear Claw, Big Eddy, Triumph N.E.C.K., Triple-Point, Ultima, Veff Serrations, Shakaulu, Onion Skinner, Hissatsu, Heiho, Free Range, Graphite, Cobia, Art Deco, Daedalus, Clark Fork, HoodWork, HCK1, My Tighe, RBT, Picatinny Tool, NIRK Tighe, S.P.E.W., Shenanigan, Grandpa's Favorite, IKBS, Ripple, Eros, Swindle, Endorser, Enticer, Para-Saw, Redemption, CRKT Tool, K.E.R.T., Otanashi noh Ken, Shinbu, Saki-mori, Chogan, Kangee, FE7, FE9, Foresight, Eat'N Tool XL, CRKT Micro Tool & Sharpener, Veff Flat Top Serrations, Tighe Rod, Moxie, Tighecon, Tighe Dye, Synergist, Sweet K.I.S.S., Obae, RSK Mk6, Keramin, Woods Chogan, Woods Kangee, No Bother, Buy Tighe, Fossil, V.A.S.P., Spark'N Sharp, ChanceinHell, Halfachance, Incendor, Hootenanny, No Time Off, Tighe Rade, Argus, Achi, Akari, Squid, Northcliffe, G.S.D., Journeyer, Deviation, Cling-on, Hoist'N Lok, Hunt'N Fisch, Saker, Mah-Chete, BT-70, Shizuka noh Ken, Yukanto, Drumfire, Thunder Strike, are trademarks of Columbia River Knife & Tool or their licensees. Kydex® is a trademark of Kleerdex Company. VELCRO® is a registered trademark of Velcro Industries. B.V. Principal Photography: Rose Studios Inc. Portland, OR. USA. Shop Photography: Lance Koudele Hood River, OR. USA, on location at Veff Sharpening Service, Oregon City, OR. Printed on recycled paper. Copyright 2014, CRKT®, Columbia River Knife & Tool®.



Columbia River Knife & Tool

18348 SW 126TH PLACE | TUALATIN, OR 97062 USA
TEL: 503.685.5015 | 800.891.3100 | FAX: 503.682.9680
CRKT.COM



CRKT IS A PROUD MEMBER OF THE AMERICAN KNIFE & TOOL INSTITUTE.
KEEPING KNIVES IN AMERICAN LIVES SINCE 1998.

22 VISTA VIEW LN, CODY, WY 82414 | AKTI.ORG