



# *Camillus has the edge!*

POCKET KNIVES

HUNTING KNIVES

PARING KNIVES

MANUFACTURED BY

CAMILLUS CUTLERY COMPANY

60 East 42nd Street • New York 17, N. Y.

FACTORY—CAMILLUS, N. Y.—NEAR SYRACUSE

Stiletto manufactured by  
Camillus for the U. S.  
Marine Corps Rangers  
during World War II.

CATALOG No. 46



TO YOU . . . MR. HARDWAREMAN

**CAMILLUS  
CUTLERY  
COMPANY**



*Manufacturers of fine cutlery - founded in 1876 by Adolph Kastor*

60 EAST 42<sup>ND</sup> STREET  
NEW YORK 17, N. Y.  
MURRAY HILL 3-0024

November  
1st  
1945

Mr. Hardwareman :

Work started on this catalog in the dark days of 1942. It has been a long and painstaking task. If I was the source of its inspiration, I am grateful for the results. The credit belongs to my loyal associates who have contributed in full measure to our war efforts and have made this enterprise the recognized leader in its field.

The catalog symbolizes our belief that pocket knives of quality will always have a ready market and that one of the most effective channels for their distribution is through the hardware jobber who is the good neighbor and friend of the retail hardware dealer on whose counter they are displayed and sold to the ultimate consumer.

In all humility, we hope that this book may lighten your labor and add to your profits.

Very sincerely yours,

CAMILLUS CUTLERY COMPANY

Alfred B. Kastor  
Chairman of the Board

B

FACTORY • CAMILLUS, N. Y. • NEAR SYRACUSE



# Why CAMILLUS HAS THE EDGE

The cutting keenness of each and every Camillus blade quickly demonstrates that Camillus has the edge. But Camillus also has the "edge" in a more complete sense—in an over-all superiority in the manufacturing and merchandising of fine quality knives . . . at low relative cost. Let's look into the reasons behind this proven performance.

## **Finest Cutlery Steel**

The basic quality of a knife rests in the steel used in the blades and springs. For this reason Camillus has devoted unceasing research to the development of the finest steel that can be made for pocket knives . . . the finest that skilled craftsmen, modern controls and years of experience can produce. The manufacturer of this steel, and partner in the development of it, is the Crucible Steel Company of America, famous as the largest producer of cutting steels in the world.

The keen edge of the Camillus blade starts with special ore in Crucible-owned mines in Minnesota. Under utmost care this ore is converted into high-quality pig iron. The pig iron, combined with selected steel scrap and purifying elements, is then refined to a uniformly top-quality steel. This steel is made to specifications developed by Crucible and Camillus after years of experimenting . . . specifications so exact that if a housewife were to bake a cake with the same relative care, her measurements would be made in ten-thousandths of an ounce.

During the manufacturing process the steel is continually analyzed, chemically and metallurgically. The final analysis is sent to Camillus to be checked. When the steel arrives at Camillus, it is again completely analyzed by an independent metallurgical laboratory.

Thus, a high carbon cutlery steel is fabricated that is unsurpassed for pocket knife use.

This is only part of the job of making a fine blade, however, for the processing of this steel into gleaming, rugged, super-sharp Camillus blades has still to be performed in a series of the most exacting operations.

## **Finest Quality Blades and Springs**

The steel is blanked to an absolutely accurate shape without disturbing the special strength-structure rolled into the steel at the steel mill. Then one of the most important operations in the manufacturing of a knife takes place—the hardening

and tempering of the blades and springs. With the newest equipment and by the use of precise electrical controls, instead of the fallible human eye, Camillus achieves the exact degree of hardness and toughness desired for strong, durable blades with keen, long-lasting edges . . . blades that can really take it. This exactness is attained with a uniformity never before found in pocket cutlery.

Special grinding, glazing and polishing machines impart exact bevels and a sleek, mirror-like finish. The edge is put on with a delicate human touch, mechanically guided to the perfect keenness required in all Camillus blades.

The springs, produced under the same scientific controls, have a precise resilience, tension, size and finish.

## **Carefully Selected Materials**

Good quality in every component part and every material is essential to good quality in a knife. The American Brass Company, one of the foremost producers of non-ferrous metals in the world, supplies Camillus brass . . . brass carefully alloyed and rolled to specifications known to be the best.

Eighteen percent nickel silver that stays bright longer—used on bolsters, shields and some rivets and linings—is manufactured by the same firm with the same exacting care.

Bone stag handles, still the most popular, must be carefully cut from specially-selected, imported, steer shin bone, then properly stained and matched for beauty and wearability.

Plastic materials for handles, manufactured by the Monsanto Chemical Company, are chosen for sturdiness and for fineness and permanence of design detail.

Rosewood, from South America, is specified because of its close grain, extraordinary strength and natural beauty.

Genuine pearl from the South Pacific, sometimes called Mother-of-Pearl, makes one of the most beautiful pocket knife handles. Camillus fashions it with meticulous care to bring out all of its lustrous iridescence and to eliminate natural defects.

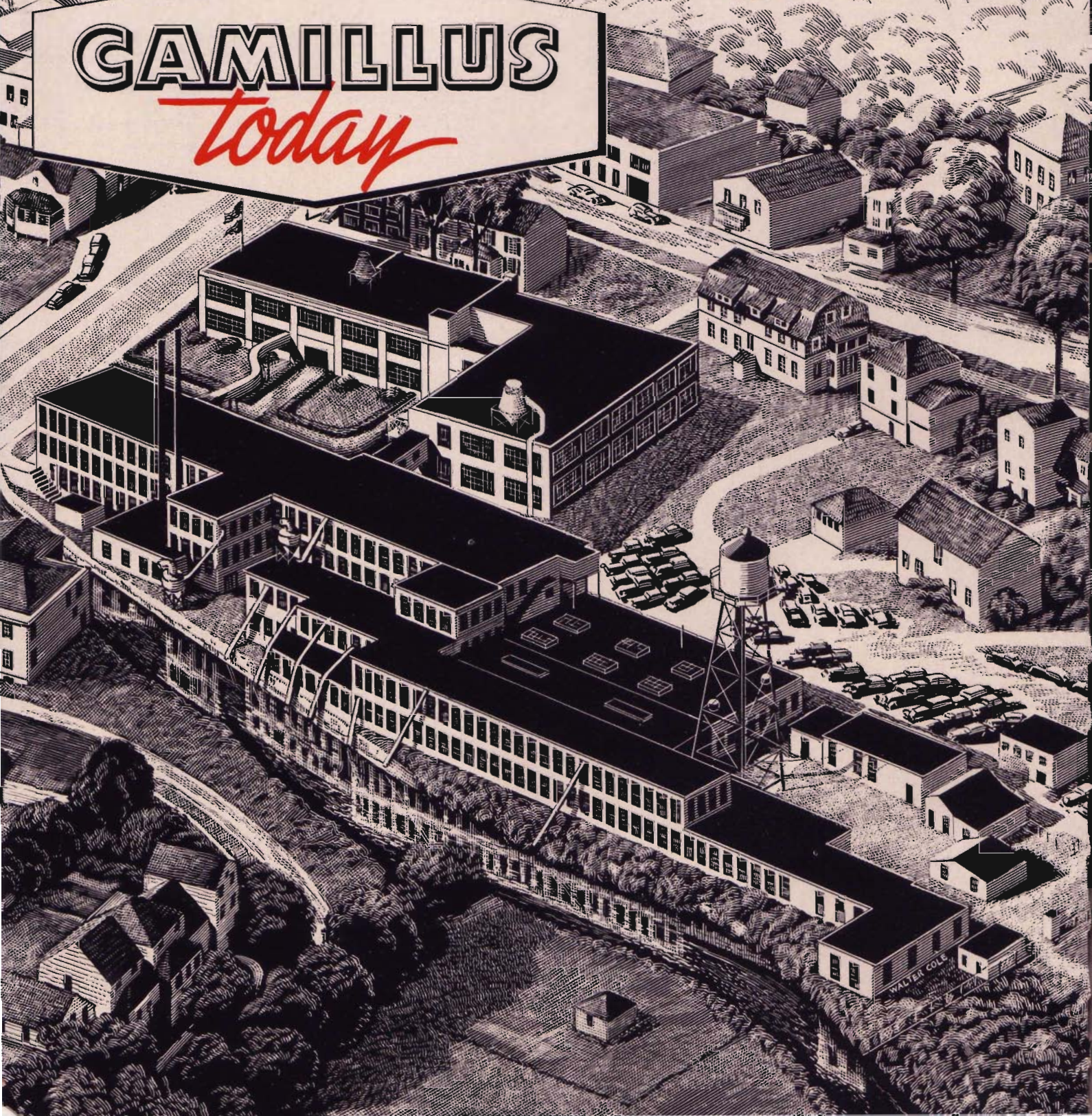
By constant, close supervision of its sources of supply, Camillus gets top utility, as well as enduring beauty, from all the materials it uses.

Turn to Page 5





# GAMILLUS *Today*





### **Skilled Workmanship**

Machines are controlled by workmen and are only as good as their operators. One of the prime benefits of being the oldest of the large manufacturers of pocket knives in America is that through the years Camillus has acquired and trained the finest cutlery personnel . . . experts who have learned their trade in association with the latest equipment and manufacturing methods . . . men and women who have grown up in the tradition of fine cutlery. These skilled cutlers are constantly training younger successors, apprentices who have shown special skills in each branch of quality knife manufacturing.

A workman must have peace of mind, must be happy in his work, to turn out consistently good quality. Camillus achieves this through benevolent management that regards the workman as the most important single factor in a successful business, through worker benefits considered the most liberal in the industry, and through a Profit-Sharing Trust that makes each worker a participant in the success of the firm.

The result of this superior workmanship is knives in which quality speaks for itself, with blades that fit properly, that open and shut with a click . . . knives with handles that match perfectly to the bolster, with backs that are smooth and polished, with edges that really cut and keep cutting . . . knives that you yourself will want to own as well as sell.

### **Precision Production.**

Augment this skilled workmanship with the best modern equipment and you have the perfect combination for the manufacture of top-quality knives. Camillus has taken full advantage of the vast technological improvements—made under the intense war demands for precise manufacturing methods—to install the most efficient and accurate high-speed machinery. At vital points it holds tolerances to two one-thousandths of an inch . . . the breadth of a human hair . . . getting an accuracy of mechanical fit never before achieved in pocket knife manufacture. Optical, electrical and mechanical testing apparatus, and gauge blocks, controlled to one ten-thousandth of an inch, maintain and constantly check this precision production.

A major benefit of this modern equipment is uniformity—every edge keen, every blade accurately tempered, every handle properly fitted. Uniformity builds confidence, successful sales and satisfied customers—for you.

Volume production and its companion low cost are other benefits of this efficient high-speed equipment. By the combination of modern ma-

chinery, skilled workmanship and precision controls, the production of top-quality . . . in quantity . . . at low relative cost is assured. Lower costs . . . lower selling prices give you easier sales, quicker turnover and larger total profit.

### **Exacting Inspection**

Careful, detailed inspection keeps all operators, all machines working at their best. By constant, close inspection, Camillus attains the perfection necessary to top-quality . . . perfection throughout the knife . . . in places that never show, but that are absolutely necessary to years of service and satisfaction.

### **Scientific Research**

The continuing superiority of equipment, workmanship and raw materials is made certain at Camillus through constant research by a department of practical and graduate engineers. The efficiency of knife design and performance is being improved continually by these searchers for perfection. Their expert skills are aided and supplemented by a complete laboratory with modern scientific apparatus, and a new experimental engineering department and tool room—using only the latest and best, war-developed machines.

### **Forceful Advertising and Sales Promotion**

Camillus goes beyond this manufacturing superiority to provide an advertising and sales promotion program second to none in the industry. Smart packaging, incorporating new and helpful ideas, provides more efficient handling and selling of knives. A complete advertising program keeps the line moving through the trade . . . and keeps consumers coming in. (See Page 37)

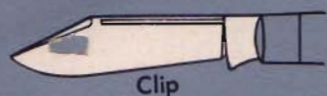
Display cases and other selling aids are available at cost and are supplemented by a continual procession of ad tie-in cards, window streamers, display cards and special point-of-sale selling units. The completeness of this program assures for you faster sales, faster turnover . . . assures that you will get the greatest return from your pocket knife business.

### **70 Years**

There is no substitute for experience, for the knowledge that can be gained only through years of operation. Seventy years have gone into the making of Camillus knives . . . seventy years of successful selling . . . seventy years through wars and peace, through good times and bad. Seventy years during which Camillus has forged ahead to become the leading manufacturer of pocket knives in America . . . to offer you now this fine, top-quality line.



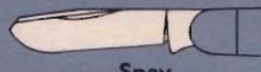
## KNIFE BLADES



Clip



Razor



Spey



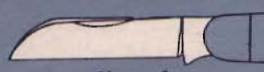
Screwdriver-cap lifter



Long Clip



Maize



Sheepfoot



Can opener (new type)



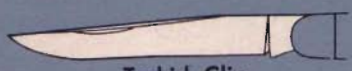
Sabre Clip



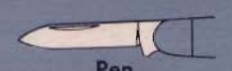
Coping



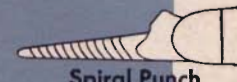
Plain Punch



Turkish Clip



Pen



Spiral Punch



Skinning



Screwdriver



Pen Clip



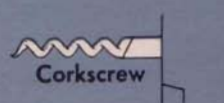
File



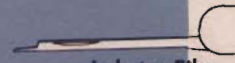
Spear



Race or Timber Scribe

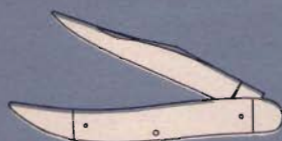


Corkscrew

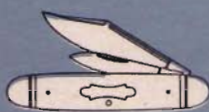


Lobster File

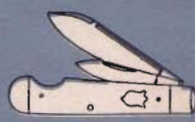
## KNIFE PATTERNS



Switchback



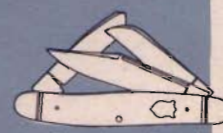
Equal End Jack



Easy Opener Jack



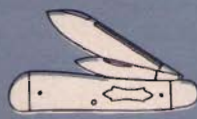
Muskrat



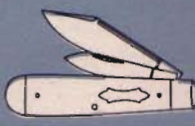
Premium Stock



Pruner—Utility



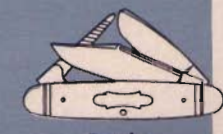
Dogleg Jack



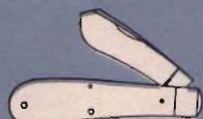
Swell End Jack



Senator Pen



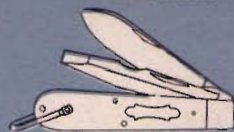
Cattle



Maize



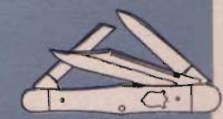
Serpentine Jack



Electrician's



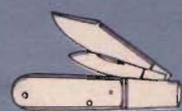
Congress Pen



Swell Center



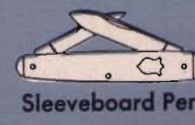
Daddy Barlow



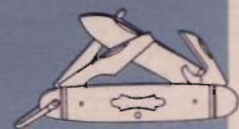
Standard Barlow



Texas Jack



Sleeveboard Pen



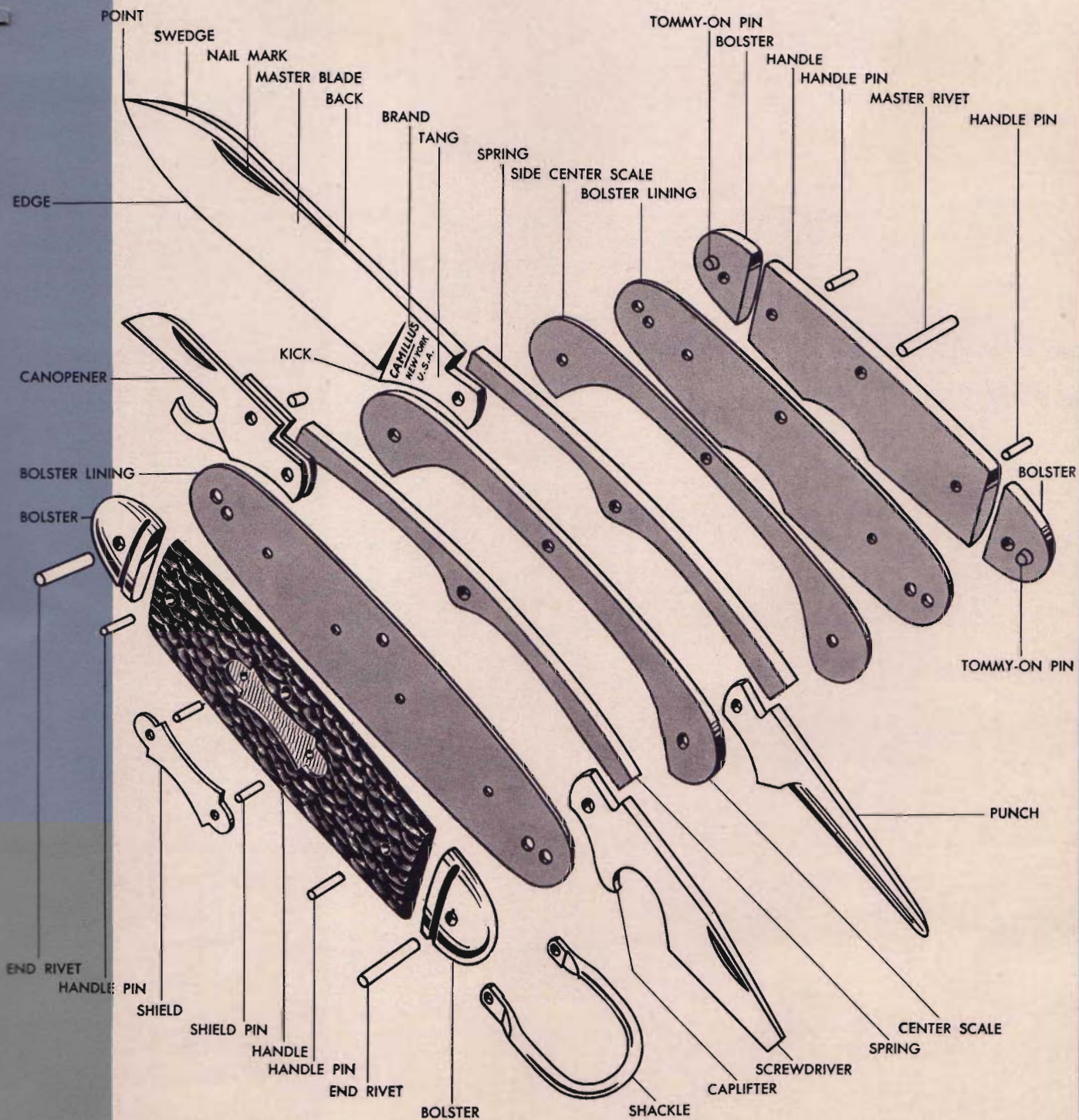
Camp



Lobster Pen



# THE PARTS OF A POCKET KNIFE



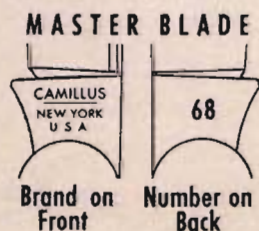
Actual size in perspective





## NUMBERING SYSTEM

1 to 9	1-Blade Jack Knives
10 to 39	2-Blade Jack Knives
40 to 59	2-Blade Pen Knives
60 to 89	3-Blade Knives
90 to 99	4-6 Blade Knives



Illustrations of knives on the following pages are actual size—in perspective



# IMPORTANT

## CATALOG CHANGES

***Be sure to read this before ordering***

KNIVES AVAILABLE — since this catalog went to press, it has been necessary to revise our line to fit in with production requirements. The knives that are now being manufactured and are available are numbers:

1	16	22	40	64	68	73
11	18	23	41	65	69	91
14	20	27	42	66	70	99
15	21	33	43	67	72	

KNIVES NOT AVAILABLE — the other knives illustrated are not available and may not be ordered now. They will be added to the line as manufacturing conditions permit. You will be notified when they may be ordered.

CHANGES IN KNIVES — For reasons of cost and manufacturing efficiency, it has been necessary to make changes in the construction of some knives, as follows:

**HANDLES** — Knives described as having bone stag may come through with PLASTAG\* handles.

This is an attractive unbreakable plastic that is staged the same as bone stag.

No. 43 — will be made with Nu-pearl handle in place of genuine pearl.

**SHIELDS** — The following knives will be made without shields:

Nos. 14 — 15 — 18 — 23 — 27 — 65.

**BLADES** — No. 72 — the pen blade has been changed from spear shape to clip shape.

The rest of the knives are being made as illustrated and described. Other minor changes may be made from time to time as conditions require. They will always be made in the best interests of the jobber, dealer and consumer.

Please disregard the red asterisks opposite certain knives as they have no meaning now.

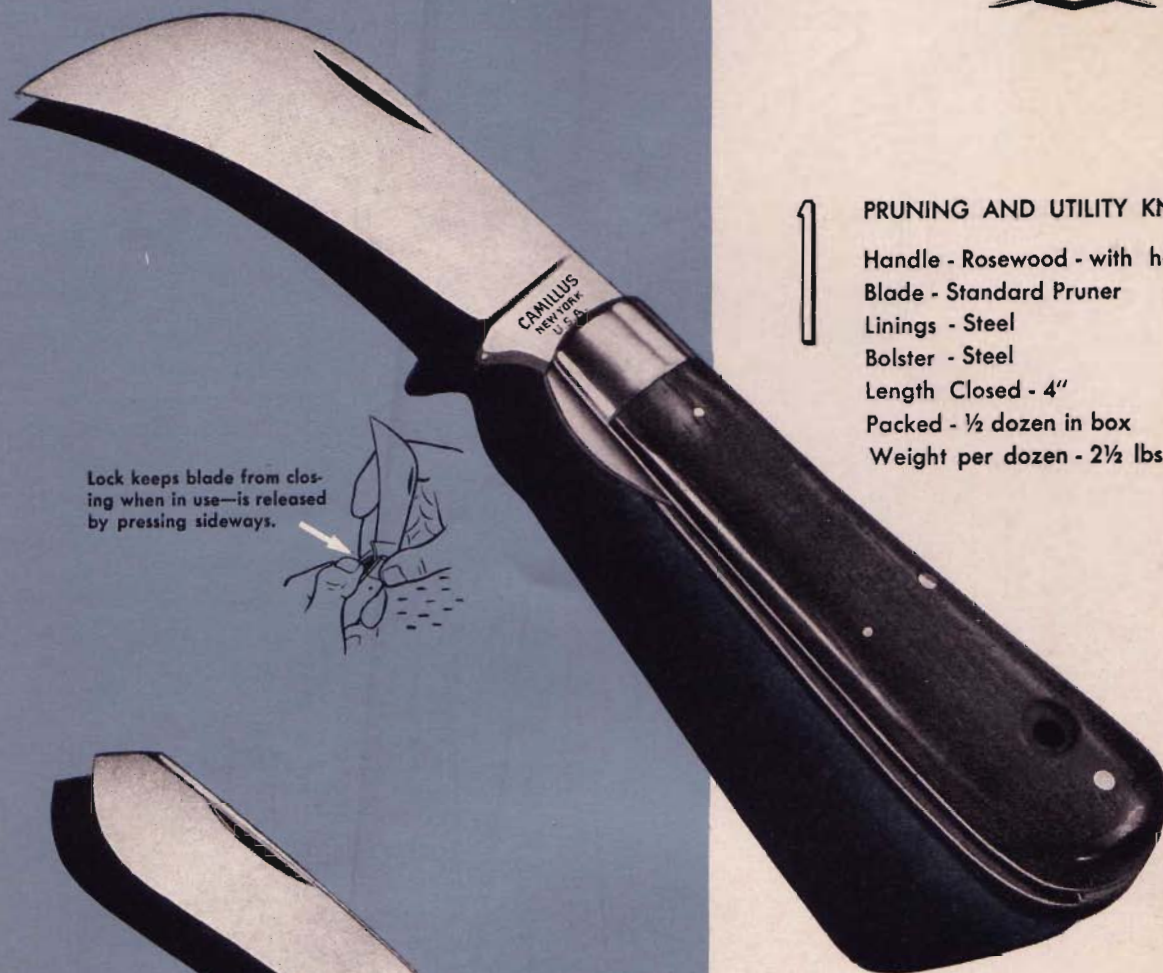
May 1, 1947

\*Trade Mark applied for

... It is pronounced Ka-MILL-us

No. 1078





Lock keeps blade from closing when in use—is released by pressing sideways.



1

#### PRUNING AND UTILITY KNIFE

Handle - Rosewood - with hole for cord  
 Blade - Standard Pruner  
 Linings - Steel  
 Bolster - Steel  
 Length Closed - 4"  
 Packed - ½ dozen in box  
 Weight per dozen - 2½ lbs.



2

#### MAIZE KNIFE

Handle - Rosewood  
 Blade - Standard Maize  
 Linings - Steel  
 Bolster - Steel  
 Length Closed - 4"  
 Packed - ½ dozen in box  
 Weight per dozen - 2¼ lbs.





# CAMILLUS



## 4

### SWITCHBACK KNIFE

Handle - Cornelia Pyroxylin

Blade - Long Clip

Linings - Brass

Bolsters - Nickel Silver

Length Closed - 5"

Packed - ½ dozen in box

Weight per dozen - 1¾ lbs.

## 9

### DADDY BARLOW KNIFE

Handle - Brown Bone

Blade - Large Clip

Linings - Steel

Bolster - Steel

Length Closed - 5"

Packed - ¼ dozen in box

Weight per dozen - 3¾ lbs.



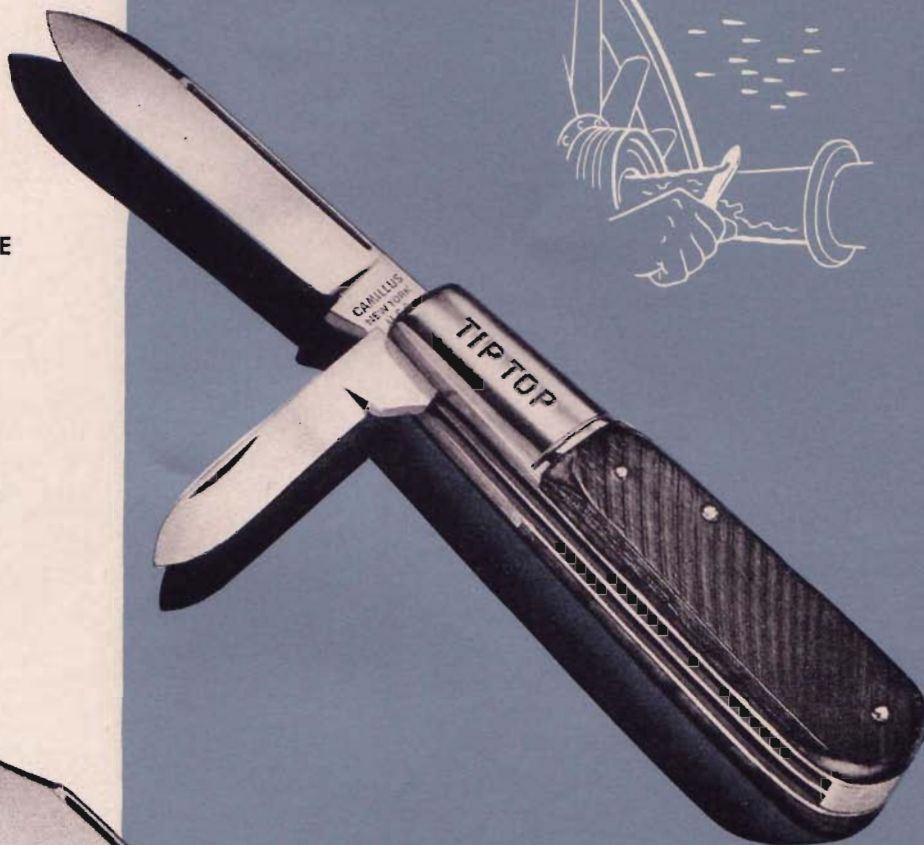


*has the edge!*

10

STANDARD BARLOW KNIFE

Handle - Brown Bone  
Blades - Spear, Pen  
Linings - Brass  
Bolster - Steel  
Length Closed - 3½"  
Packed - ½ dozen in box  
Weight per dozen - 2½ lbs.



11



STANDARD BARLOW KNIFE

Handle - Brown Bone  
Blades - Clip, Pen  
Linings - Brass  
Bolster - Steel  
Length Closed - 3½"  
Packed - ½ dozen in box  
Weight per dozen - 2½ lbs.







# CAMILLUS



## 12

### MEDIUM JACK KNIFE

Handle - Bone Stag

Blades - Clip, Pen

Linings - Brass

Cap and Bolster - Nickel Silver

Length Closed - 3½"

Packed - ½ dozen in box

Weight per dozen - 2¼ lbs.



## 13

### MEDIUM JACK KNIFE

Handle - Brown Horn Pyroxylin

Blades - Spear, Pen

Linings - Brass

Cap and Bolster - Nickel Silver

Length Closed - 3½"

Packed - ½ dozen in box

Weight per dozen - 2¼ lbs.





*has the edge!*

14



SERPENTINE JACK KNIFE

Handle - Bone Stag

Blades - Clip, Pen

Linings - Brass

Bolsters - Nickel Silver

Length Closed - 3 $\frac{3}{8}$ "

Packed -  $\frac{1}{2}$  dozen in box

Weight per dozen - 1 $\frac{1}{2}$  lbs.



15



SERPENTINE JACK KNIFE

Handle - Red Horn Pyroxylin

Blades - Clip, Pen

Linings - Brass

Bolsters - Nickel Silver

Length Closed - 3 $\frac{3}{8}$ "

Packed -  $\frac{1}{2}$  dozen in box

Weight per dozen - 1 $\frac{1}{2}$  lbs.







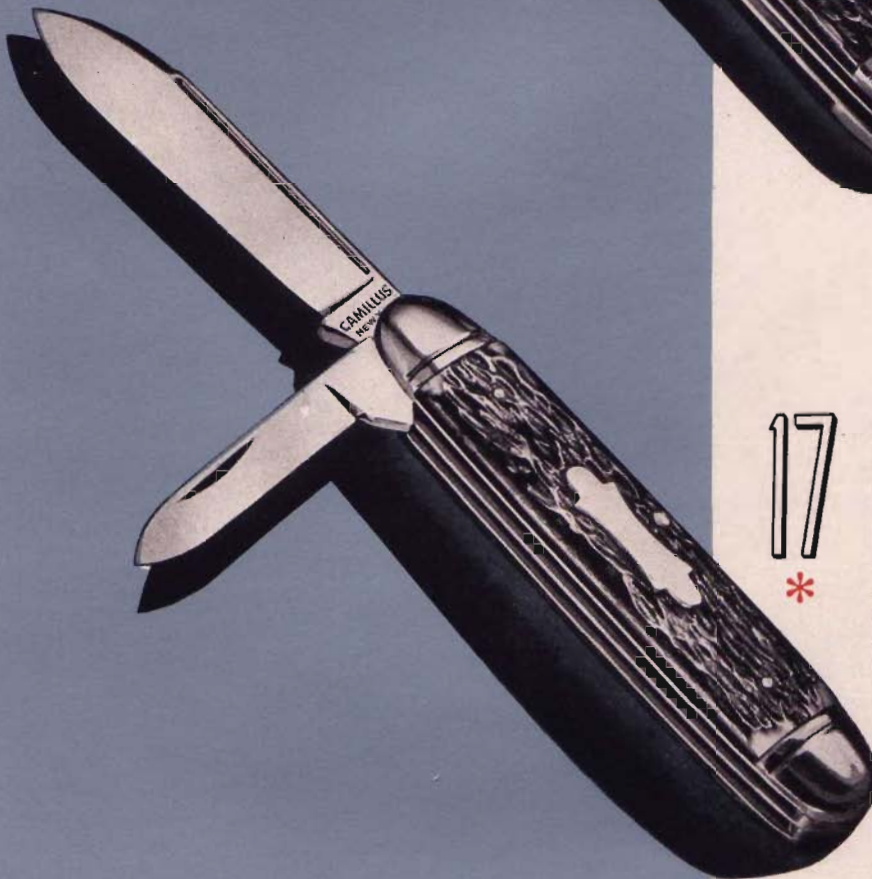
# CAMILLUS



## 16

### HEAVY EQUAL END JACK KNIFE

Handle - Bone Stag  
Blades - Clip, Pen  
Linings - Brass  
Bolsters - Nickel Silver  
Length Closed - 3 3/8"  
Packed - 1/2 dozen in box  
Weight per dozen - 2 1/2 lbs.



## 17

### HEAVY EQUAL END JACK KNIFE

Handle - Bone Stag  
Blades - Spear, Pen  
Linings - Brass  
Bolsters - Nickel Silver  
Length Closed - 3 3/8"  
Packed - 1/2 dozen in box  
Weight per dozen - 2 1/2 lbs.





*has the edge !*

18

LARGE SERPENTINE JACK KNIFE

Handle - Bone Stag  
Blades - Clip, Pen  
Linings - Brass  
Bolsters - Nickel Silver  
Length Closed - 3 $\frac{7}{8}$ "  
Packed -  $\frac{1}{2}$  dozen in box  
Weight per dozen - 2 $\frac{1}{4}$  lbs.



20

MUSKRAT SKINNING KNIFE

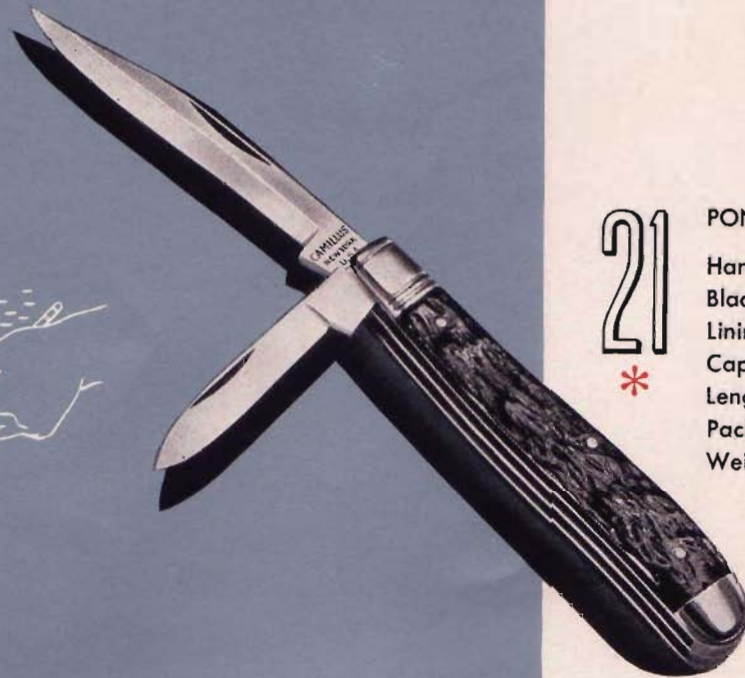
Handle - Bone Stag  
Blades - 2 Skinning Clip  
Linings - Brass  
Bolsters - Nickel Silver  
Length Closed - 3 $\frac{7}{8}$ "  
Packed -  $\frac{1}{2}$  dozen in box  
Weight per dozen - 1 $\frac{3}{4}$  lbs.







# CAMILLUS



## 21



### PONY JACK KNIFE

Handle - Bone Stag  
Blades - Sabre Clip, Pen  
Linings - Brass  
Cap and Bolster - Nickel Silver  
Length Closed -  $2\frac{1}{16}$ "  
Packed -  $\frac{1}{2}$  dozen in box  
Weight per dozen -  $1\frac{1}{4}$  lbs.



## 22



### PONY JACK KNIFE

Handle - Maize Pyroxylin  
Blades - Sabre Clip, Pen  
Linings - Brass  
Cap and Bolster - Nickel Silver  
Length Closed -  $2\frac{1}{16}$ "  
Packed -  $\frac{1}{2}$  dozen in box  
Weight per dozen - 1 lb.





*has the edge!*

23

LARGE EQUAL END JACK KNIFE

Handle - Grain White Pyroxylin

Blades - Large Spear, Pen

Linings - Brass

Bolsters - Nickel Silver

Length Closed -  $4\frac{3}{16}$ "

Packed -  $\frac{1}{2}$  dozen in box

Weight per dozen -  $3\frac{1}{4}$  lbs.



27

ELECTRICIAN'S KNIFE

Handle - Rosewood

Blades - Spear, Screwdriver with sharp edge for scraping insulation

Linings - Brass

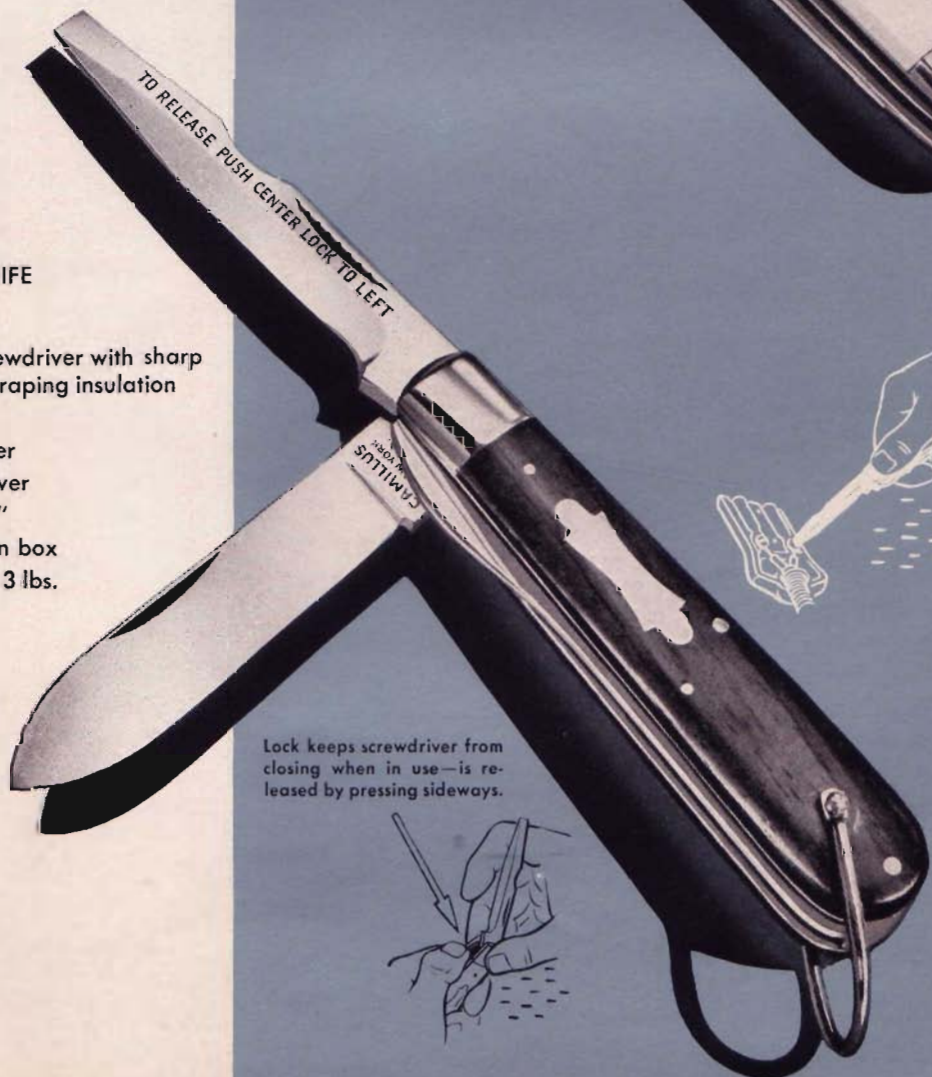
Bolster - Nickel Silver

Shackle - Nickel Silver

Length Closed -  $3\frac{3}{4}$ "

Packed -  $\frac{1}{2}$  dozen in box

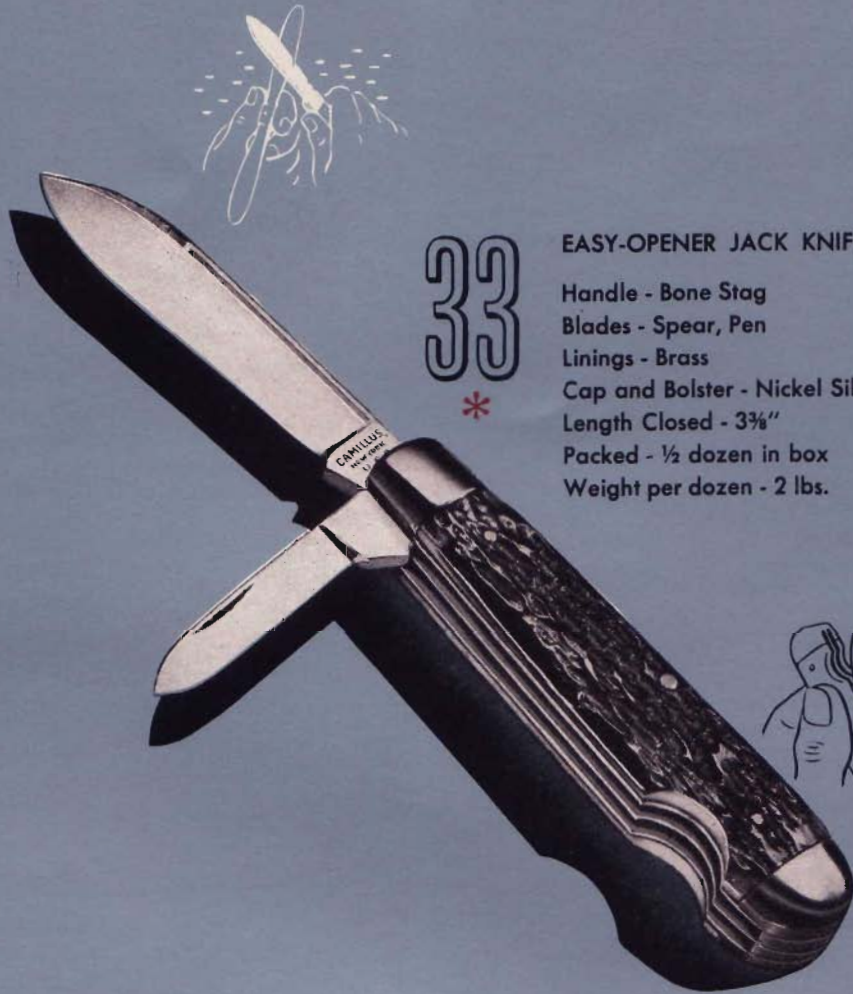
Weight per dozen - 3 lbs.



Lock keeps screwdriver from closing when in use—is released by pressing sideways.



 **CAMILLUS**



33



**EASY-OPENER JACK KNIFE**

Handle - Bone Stag

Blades - Spear, Pen

Linings - Brass

Cap and Bolster - Nickel Silver

Length Closed - 3 3/8"

Packed - 1/2 dozen in box

Weight per dozen - 2 lbs.





*has the edge!*

40  
\*

CONGRESS PEN KNIFE

Handle - Bone Stag  
Blades - Sheepfoot, Pen  
Linings - Brass  
Bolsters - Nickel Silver  
Length Closed -  $3\frac{7}{16}$ "  
Packed -  $\frac{1}{2}$  dozen in box  
Weight per dozen -  $1\frac{1}{4}$  lbs.



41

SENATOR PEN KNIFE

Handle - Bone Stag  
Blades - Spear, Pen  
Linings - Brass  
Bolsters - Nickel Silver  
Length Closed -  $3\frac{1}{8}$ "  
Packed -  $\frac{1}{2}$  dozen in box  
Weight per dozen - 1 lb.

42  
\*

SENATOR PEN KNIFE

Handle - Nu-Pearl  
Blades - Spear, Pen  
Linings - Brass  
Tips - Nickel Silver  
Length Closed -  $3\frac{1}{8}$ "  
Packed -  $\frac{1}{2}$  dozen in box  
Weight per dozen - 1 lb.







# CAMILLUS

## 43

### SLIM SENATOR PEN KNIFE

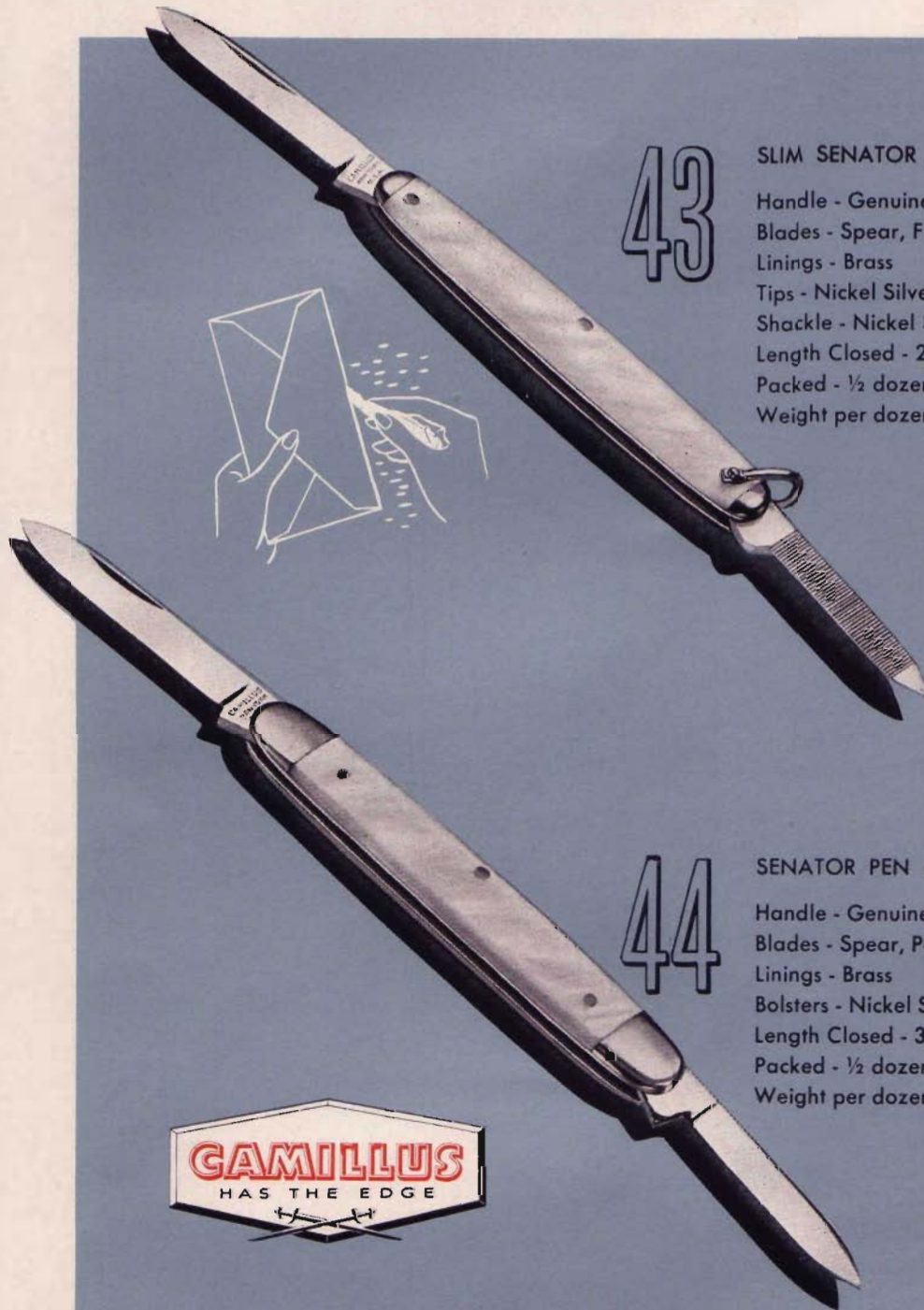
Handle - Genuine Pearl  
Blades - Spear, File  
Linings - Brass  
Tips - Nickel Silver  
Shackle - Nickel Silver  
Length Closed -  $2\frac{13}{16}$ "  
Packed -  $\frac{1}{2}$  dozen in box  
Weight per dozen -  $\frac{3}{4}$  lb.



## 44

### SENATOR PEN KNIFE

Handle - Genuine Pearl  
Blades - Spear, Pen  
Linings - Brass  
Bolsters - Nickel Silver  
Length Closed -  $3\frac{1}{8}$ "  
Packed -  $\frac{1}{2}$  dozen in box  
Weight per dozen - 1 lb.





*has the edge !*

60

DE LUXE SENATOR PEN KNIFE

Handle - Bone Stag  
Blades - Spear, Pen, File  
Linings - Nickel Silver - milled  
Tips - Nickel Silver  
Length Closed - 3 1/8"  
Packed - 1/2 dozen in box  
Weight per dozen - 1 1/4 lbs.



61

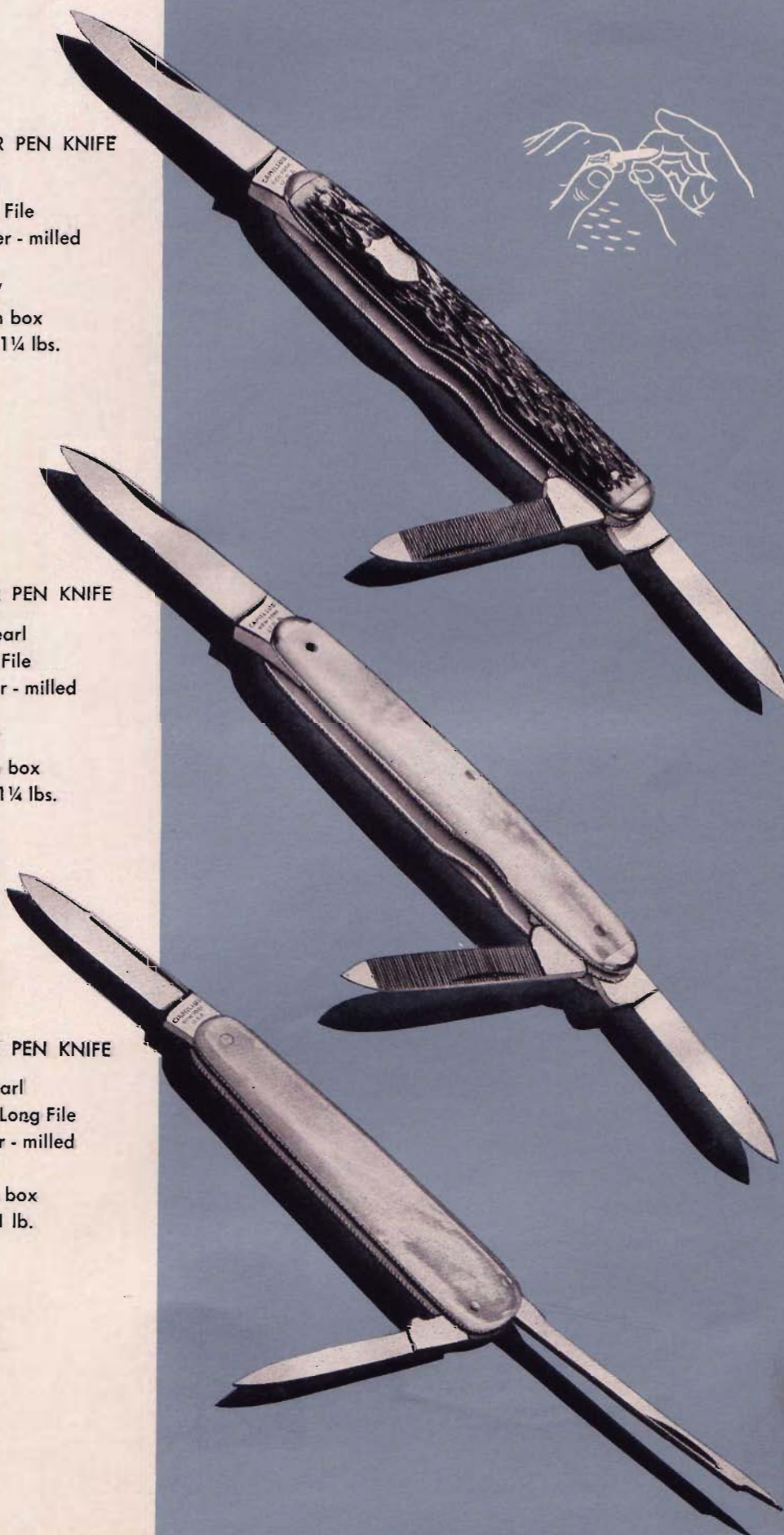
DE LUXE SENATOR PEN KNIFE

Handle - Genuine Pearl  
Blades - Spear, Pen, File  
Linings - Nickel Silver - milled  
Tips - Nickel Silver  
Length Closed - 3 1/8"  
Packed - 1/2 dozen in box  
Weight per dozen - 1 1/4 lbs.

62

DE LUXE FILE-BACK PEN KNIFE

Handle - Genuine Pearl  
Blades - Spear, Pen, Long File  
Linings - Nickel Silver - milled  
Length Closed - 2 3/4"  
Packed - 1/2 dozen in box  
Weight per dozen - 1 lb.







# CAMILLUS



## 63

### JUNIOR PREMIUM STOCK KNIFE

Handle - Maize Pyroxylin  
Blades - Clip, Sheepfoot, Pen  
Linings - Brass  
Bolsters - Nickel Silver  
Length Closed - 3 $\frac{3}{8}$ "  
Packed -  $\frac{1}{2}$  dozen in box  
Weight per dozen - 1 $\frac{1}{2}$  lbs.



## 64

### JUNIOR PREMIUM STOCK KNIFE

Handle - Bone Stag  
Blades - Clip, Spey, Spiral Punch  
Linings - Brass  
Bolsters - Nickel Silver  
Length Closed - 3 $\frac{3}{8}$ "  
Packed -  $\frac{1}{2}$  dozen in box  
Weight per dozen - 1 $\frac{3}{4}$  lbs.





*has the edge!*

65



**JUNIOR PREMIUM STOCK KNIFE**

Handle - Brown Horn Pyroxylin  
Blades - Clip, Sheepfoot, Spey  
Linings - Brass  
Bolsters - Nickel Silver  
Length Closed - 3 $\frac{3}{8}$ "  
Packed -  $\frac{1}{2}$  dozen in box  
Weight per dozen - 1 $\frac{1}{2}$  lbs.



66



**PREMIUM STOCK KNIFE**

Handle - Grain White Pyroxylin  
Blades - Clip, Sheepfoot, Spey  
Linings - Brass  
Bolsters - Nickel Silver  
Length Closed - 3 $\frac{3}{8}$ "  
Packed -  $\frac{1}{2}$  dozen in box  
Weight per dozen - 2 $\frac{1}{4}$  lbs.







# CAMILLUS



## 67

### PREMIUM STOCK KNIFE

Handle - Bone Stag  
Blades - Clip, Sheepfoot, Spey  
Linings - Brass  
Bolsters - Nickel Silver  
Length Closed - 3 $\frac{3}{8}$ "  
Packed -  $\frac{1}{2}$  dozen in box  
Weight per dozen - 2 $\frac{1}{4}$  lbs.



## 68

### PREMIUM STOCK KNIFE

Handle - Bone Stag  
Blades - Clip, Spey, Spiral Punch  
Linings - Brass  
Bolsters - Nickel Silver  
Length Closed - 3 $\frac{3}{8}$ "  
Packed -  $\frac{1}{2}$  dozen in box  
Weight per dozen - 2 $\frac{1}{4}$  lbs.





*has the edge !*



69

DE LUXE PREMIUM STOCK KNIFE

Handle - Bone Stag  
Blades - Turkish Clip, Sheepfoot, Spey  
Linings - Nickel Silver, Milled  
Bolsters - Nickel Silver  
Length Closed - 4"  
Packed - ½ dozen in box  
Weight per dozen - 2¼ lbs.





**CAMILLUS**

70

**CATTLE KNIFE**

Handle - Bone Stag  
Blades - Clip, Sheepfoot, Spey  
Linings - Brass  
Bolsters - Nickel Silver  
Length Closed - 3 3/8"  
Packed - 1/2 dozen in box  
Weight per dozen - 2 3/4 lbs.



71

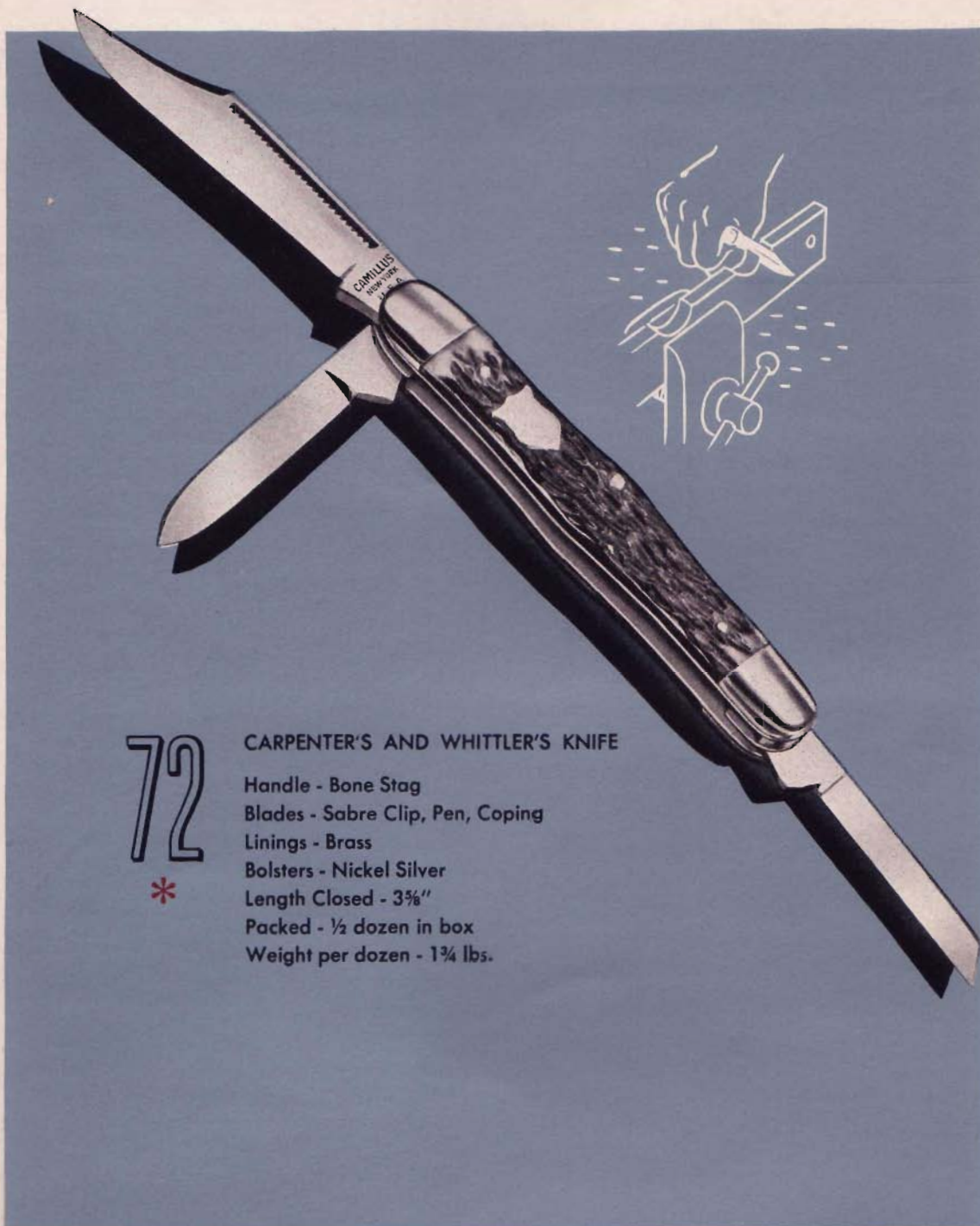
**CATTLE KNIFE**

Handle - Bone Stag  
Blades - Clip, Spey, Spiral Punch  
Linings - Brass  
Bolsters - Nickel Silver  
Length Closed - 3 3/8"  
Packed - 1/2 dozen in box  
Weight per dozen - 2 3/4 lbs.





*has the edge!*



72



CARPENTER'S AND WHITTLER'S KNIFE

Handle - Bone Stag  
Blades - Sabre Clip, Pen, Coving  
Linings - Brass  
Bolsters - Nickel Silver  
Length Closed - 3 $\frac{3}{8}$ "  
Packed -  $\frac{1}{2}$  dozen in box  
Weight per dozen - 1 $\frac{3}{4}$  lbs.





**CAMILLUS**



73  
\*

**CATTLE KNIFE**

Handle - Maize Pyroxylin  
Blades - Clip, Spey, Spiral Punch  
Linings - Brass  
Bolsters - Nickel Silver  
Length Closed - 3 5/8"  
Packed - 1/2 dozen in box  
Weight per dozen - 2 1/2 lbs.





*has the edge!*

91  
\*

CONGRESS KNIFE

Handle - Bone Stag  
Blades - 2 Sheepfoot, 2 Pen  
Linings - Brass  
Bolsters - Nickel Silver  
Length Closed -  $3\frac{7}{16}$ "  
Packed -  $\frac{1}{2}$  dozen in box  
Weight per dozen -  $1\frac{3}{4}$  lbs.



92

LARGE CONGRESS KNIFE

Handle - Bone Stag  
Blades - 2 Sheepfoot, 2 Pen  
Linings - Brass  
Bolsters - Nickel Silver  
Length Closed -  $4\frac{1}{8}$ "  
Packed -  $\frac{1}{2}$  dozen in box  
Weight per dozen -  $2\frac{3}{4}$  lbs.



 **CAMILLUS**



96

**SPORTSMAN'S KNIFE**

Handle - Bone Stag  
 Blades - Spear, Screwdriver-cap lifter,  
 Pen Clip, Can opener, Punch,  
 Corkscrew  
 Linings - Brass  
 Bolsters - Nickel Silver  
 Shackle - Nickel Silver  
 Length Closed - 3<sup>11</sup>/<sub>16</sub>"  
 Packed - ½ dozen in box  
 Weight per dozen - 2<sup>3</sup>/<sub>4</sub> lbs.





*has the edge!*

NEW TYPE CANOPENER  
cuts down into can—leaving  
clean edge turned in.

HOW TO OPERATE:



99



#### CAMP KNIFE

Handle - Plastic Stag

Blades - Spear, Canopener, Punch,  
Screwdriver-caplifter

Linings - Brass

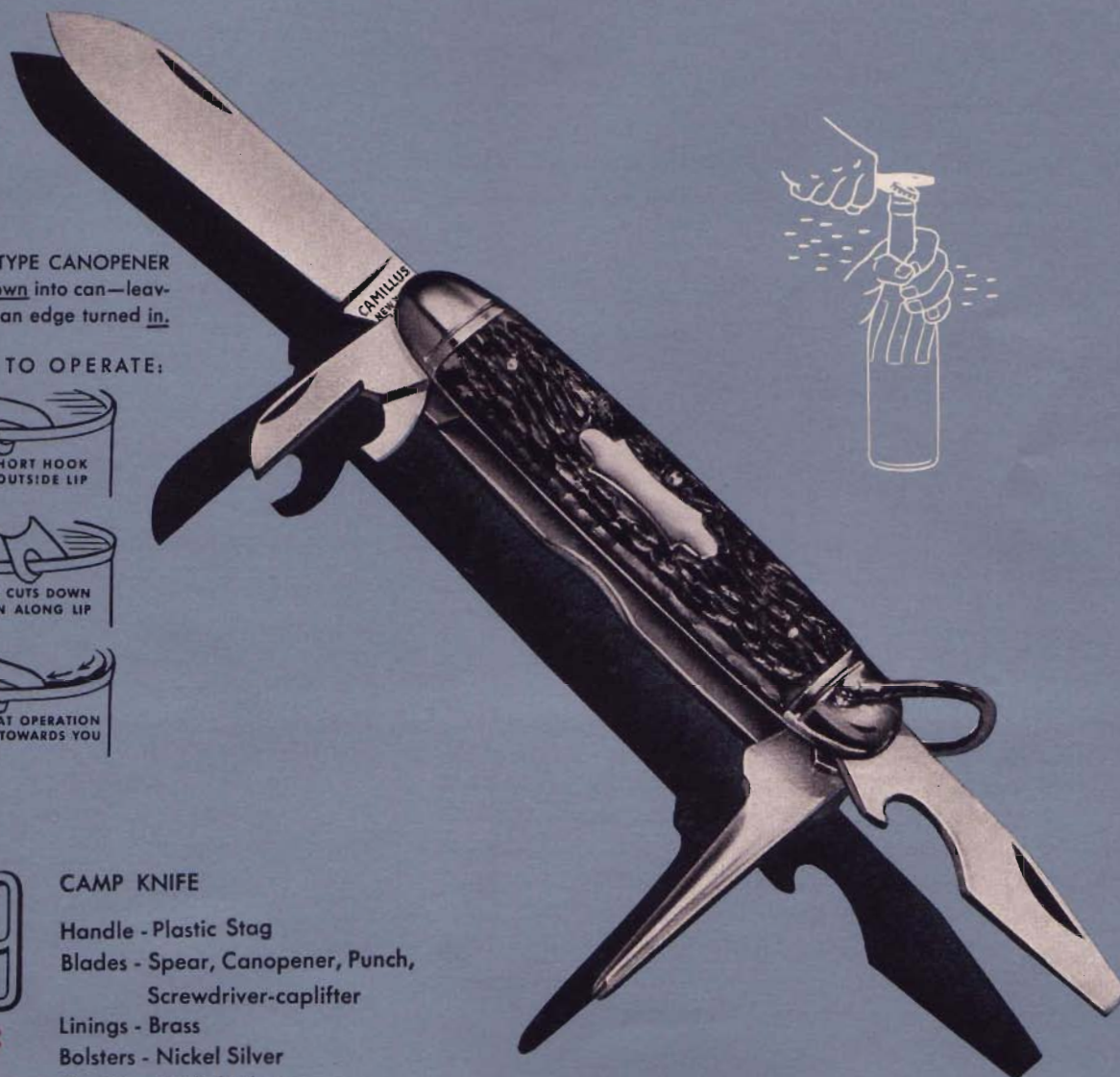
Bolsters - Nickel Silver

Shackle - Nickel Silver

Length Closed - 3 3/8"

Packed - 1/2 dozen in box

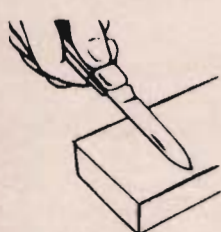
Weight per dozen - 3 lbs.



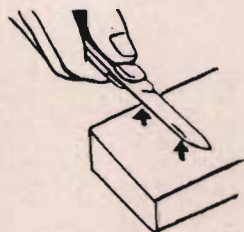


## Sharpening

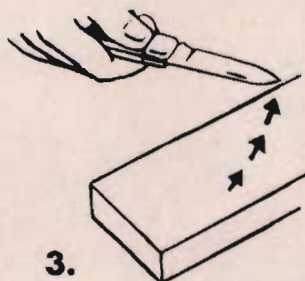
If a knife is sharpened properly, it will take a keen edge and hold it much longer. There is only one right way, and the wrong way can ruin a blade in short order. It is important for you to learn the right method:



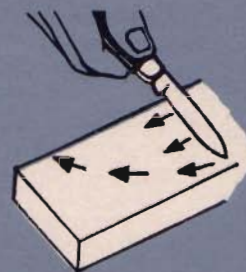
1.  
Lay blade flat  
on oil stone



2.  
Raise back of  
blade about  $\frac{1}{8}$ "



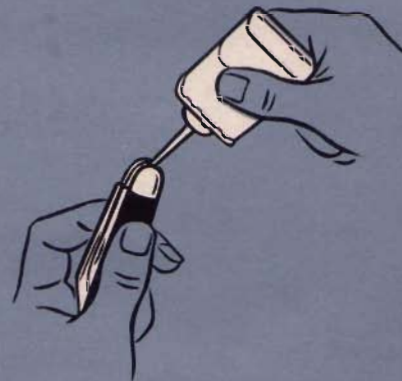
3.  
Sharpen against edge  
— drawing blade off  
stone at the same time



4.  
Reverse this  
same operation

## Oiling

The joints of a knife need lubricating just as a machine. Before oiling clean out the dirt which accumulates at the joint. A drop of light oil at each joint keeps the blades working smoothly and easily, keeps a knife a pleasure to use. Factory tests prove that if a knife is oiled, the joints will last a lifetime. If not oiled, the joints will wear away, bind and the knife will quickly become unusable.

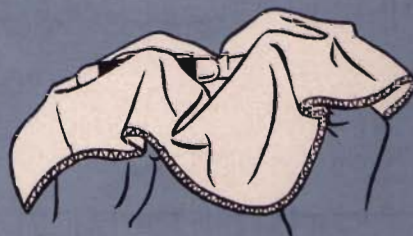


## Wiping

Most pocket knife blades and springs are made of carbon steel which will rust. To prevent rust it is necessary to keep them clean.

Wipe the blades and backs from time to time with a dry or slightly oily cloth, especially after they have come in contact with moisture or perspiration.

The nickel silver and brass parts of a knife may be polished easily with silver polish.





## THE CARE OF SAMPLES

The gleaming steel and silvery trim of a pocket knife is a magnet to men, and women as well. Symmetrical arrangement of well-made, well-kept pocket knives starts a sale on the way.

When a knife leaves our factory it is in perfect condition for selling and will remain that way as long as it is in its original wrapper. From there on the job is yours. You will be able to keep your pocket knives tip-top in appearance by following these few simple rules:

### Jobber Salesmen



1. Keep a wiping cloth with your samples.
2. Wipe knives after every handling — blades, back, and other metal parts. When you put the knives back in the roll wipe off those handled. They'll then be bright and shiny for the next showing.
3. Go over your samples completely after each trip.
  - a. Clean off tarnish with polish.
  - b. Oil joints of hard-working blades.
  - c. Wipe the knife clean of fingerprints, excess oil and polish.
  - d. Replace any knives that have become rusty.
4. Your roll or display case should be brushed and cleaned after each trip. This improves the appearance of your samples considerably.
5. Keep samples in regular order. If you arrange them by our numbers, they will automatically be in order and you can find them easily and quickly.

### Dealers



1. Keep a wiping cloth, a small can of oil and a sharpening stone in your display case.
2. All who sell knives should learn to wipe them after each handling. Perspiration contains acid which can rust a knife in a matter of hours. Keep samples clean. It is also good business to oil the joints of a knife when you sell it, and to show your customers how to sharpen a knife properly.
3. Delegate one person to take care of the pocket knives.
  - a. Wipe all open samples regularly every month, more often in warm or wet weather.
  - b. Oil the joints of hard-working blades.
  - c. Put samples in proper places.
  - d. Clean out display case.
  - e. Set aside any rusty knives so that they are not offered as top quality.

The amount of time spent performing these simple tasks will earn you extra cash—made through extra sales—made only because the knives were attractively displayed. Make the magnetism of well displayed knives work for you.







# CAMILLUS KNIVES

Army General Purpose Knife

Army Engineers and Marine Corps Utility Knife

Navy and Coast Guard General Utility Knife (Present)

Navy and Coast Guard General Utility Knife (Former)

Army and Navy Electrician's Knife

Army Air Corps Utility Knife

Navy Aviation and Ship Stores Resale Utility Knife

Army Post Exchange Resale Knife

## Rapido Fight Worse Than Salerno

By JAMES E. ROPER,  
United Press War Correspondent.

WITH THE FIFTH ARMY BEFORE CASSINO, Jan. 23 (Delayed)... "I killed one German with a hand grenade," the unidentified soldier said, "and another with my trench knife."

"As I was crawling toward the river I got another with my pocket knife."

Reprinted from the World-Telegram  
January 24, 1944

Reproduced by  
permission of the United Press

## Amputates Foot With Combat Knife

By the United Press.

OKINAWA, May 25.—...A Navy pharmacist's mate, successfully amputated a Marine's foot with a combat knife during a Jap mortar barrage, a Marine combat correspondent disclosed today.

Reprinted from the World-Telegram  
May 25, 1945

Reproduced by  
permission of the United Press

During World War II the military demand for pocket knives and fighting knives grew continually — like a snowball rolling downhill. Towards the end of the war the requirements of the Armed Forces far exceeded the production capacity of the entire industry. That the knives made were needed as part of the essential equipment of soldiers, sailors, marines and coast guardsmen, and used many times under life or death circumstances is attested by the clippings reproduced here. These are just a few of many reported instances.

Manufacturing knives for the military was an old custom at Camillus—beginning with those made during World War I knives were continually supplied to the Army and Navy. When World War II made greater and greater demands, more and more of their production was turned over to the manufacture of war knives until practically the entire plant capacity was devoted to the

Maritime Commission and Merchant Marine Sailor's Knife

Army and Navy Air Corps Emergency Fishing Knife

Navy Marlin Spike Knife



*that went to war !*

furtherance of the war effort.

The efficiency and excellence of this production were recognized by the War Department when on August 17, 1943, the Army-Navy "E" was awarded. This — the first such honor in the pocket knife industry — was awarded when less than 2½% of all eligible war plants had received it. Three stars for continued excellence were added as Camillus' war production matched contract demands. When the fighting had stopped, almost 12,000,000 pocket knives and over 2,000,000 fighting and other sheath knives had gone to war from the Camillus factory . . . a record unequalled in the industry.

This intense production not only helped our war effort—but also you —by quickening the development of the finest factory for the manufacture of quality pocket knives and hunting knives America has ever seen. A factory that now serves you with top efficiency, modern manufacturing methods, and war-tempered skill.



### Knife-and-Pen Surgery Saves Wounded G.I.

**Medical Aid Man, 19, Cuts  
Into Comrade's Windpipe  
as Shells Land Close By**

...While machine guns chattered all around, with mortar shells still landing close by, with a muddy field for an operating table and a gray sky for light, with his jack-knife for a scalpel and without any anesthetics or drugs, K..... cut into the wounded man's throat.

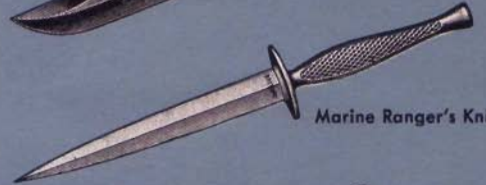
*Reprinted from  
the New York Herald Tribune  
November 30, 1944  
Reproduced by their permission*



Army Bayonet-Knife



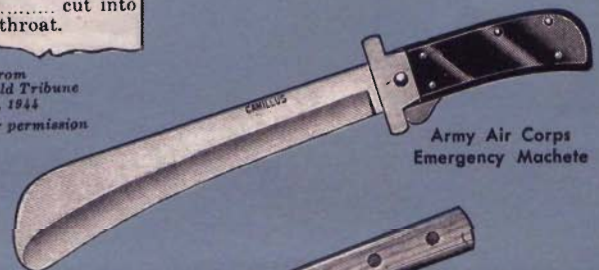
Navy and Marine  
Fighting-Utility Knife



Marine Ranger's Knife



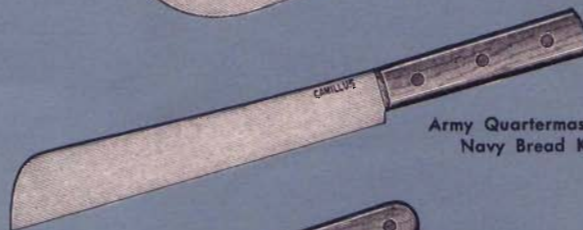
Army Air Corps and  
Navy Sheath Knife



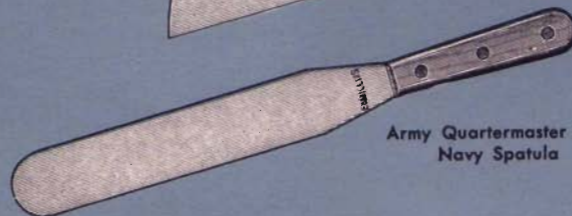
Army Air Corps  
Emergency Machete



Army Quartermaster  
Butcher Knife



Army Quartermaster and  
Navy Bread Knife



Army Quartermaster and  
Navy Spatula



Army Quartermaster and  
Navy Paring Knife



Army Scalpel



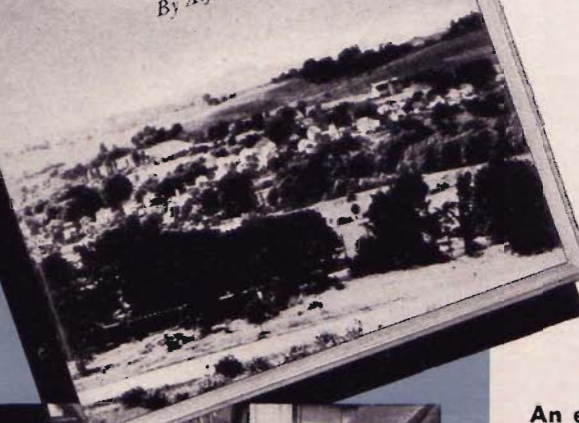


Business Life in America Series

# CAMILLUS

THE STORY OF  
AN AMERICAN SMALL BUSINESS

By Alfred Lief



## The Story of an American Small Business

*A book written by the well known author, Alfred Lief, about Camillus . . . its history, traditions, growth, and spirit. The following excerpts from this book reflect the character of the firm.*

### An early, simple start

"On October 1, 1876, Adolph Kastor was in business for himself. He was twenty. He set up store on Canal Street with very little stock, assisted by his older brother."

### The Kastors take over Camillus

"When the Kastors took over at Camillus [in 1902] they proceeded in harmony with the economic and social principles which made our country grow . . . Having outlets for knives . . . experience and a good name in the trade, what they needed was production. So steam-driven drop-forge hammers and fly presses invaded the hallowed realm of hand forging."

### Continual progress

"First, a decision was made to concentrate on pocket knives—to become foremost in one thing . . . Next, a pioneering step was taken. In 1927, the company . . . introduced mass production into the American cutlery industry . . . Underlying mass production was another principle—simplification . . . So Camillus marched on. Sales and production reached new peaks, as did the payroll."

### War—the peak of production

"The know-how to meet rigid [Government] specifications was an integral part of the company's resources, and it possessed facilities for mass output and delivery on the dot. Camillus could make knives to withstand the toughest tests in history—rigorous combat duty and field service in every climate."

### The path ahead

"The new techniques and machinery devised to cope with that extraordinary task would remain as a legacy in the resumption of manufacture for civilian needs, and the whole remarkable experience would insure better goods. The resourcefulness and flexibility of the plant must be matched by vision and initiative. For the American Way is dedicated to an unceasing striving for fuller living and security. And Camillus, in its own little corner of America, is a custodian of that spirit."





# GAMILLUS

## Advertising

Advertising, one of the most successful selling forces in American business, is now directed to selling Camillus knives—right through to the consumer.

### Trade Advertising

All the major trade papers are being used in a campaign designed to inform wholesaler executives, salesmen, and retailers of all the pertinent facts about Camillus. It will keep the trade constantly advised about Camillus' fine quality.

### Consumer Advertising

A national campaign will continually remind potential knife buyers of Camillus quality . . . and low relative cost. It will keep consumers coming in, give you faster sales, faster turnover and larger profits.

Look for these ads . . . they are working for you.







## GENERAL INDEX

	Page
Advertising and Sales Promotion.....	5, 37
Barlow Knife — Daddy .....	10
Barlow Knife — Standard .....	11
Blade Types .....	6
Camp Knife .....	30, 31
Care of a Knife.....	32
Care of Samples .....	33
Carpenter's Knife .....	27
Cattle Knife .....	26, 28
Congress Knife .....	19, 29
Electrician's Knife .....	17
Factory View .....	4
File-Back Pen Knife, De Luxe.....	21
Hunting Knives .....	*
Inspection .....	5
Jack Knives	
Easy Opener .....	18
Heavy Equal End.....	14
Large Equal End.....	17
Large Serpentine .....	15
Medium .....	12
Pony .....	16
Serpentine .....	13
Knife Patterns .....	6
Maize Knife .....	9
Muskrat Knife .....	15
Numbering System .....	8
Paring Knives .....	*
Parts of a Pocket Knife.....	7
Pen Knife — Genuine Pearl .....	20, 21
Pen Knife — Senator .....	19, 20, 21
Premium Stock Knife — Junior .....	22, 23
Premium Stock Knife .....	23, 24, 25
Pruning and Utility Knife.....	9
Skinning Knife .....	15
Sportsman's Knife .....	30, 31
Steel, Quality .....	3
Switchback Knife .....	10
War Knives .....	34, 35
Whittler's Knife .....	27
Workmanship .....	5

\* Not available at time this catalog was printed.

## NUMBER INDEX

### Knife No.    Page No.

#### 1-Blade Jack Knives

1.....	9
2.....	9
4.....	10
9.....	10

#### 2-Blade Jack Knives

10.....	11
11.....	11
12.....	12
13.....	12
14.....	13
15.....	13
16.....	14
17.....	14
18.....	15
20.....	15
21.....	16
22.....	16
23.....	17
27.....	17
33.....	18

#### 2-Blade Pen Knives

40.....	19
41.....	19
42.....	19
43.....	20
44.....	20

#### 3-Blade Knives

60.....	21
61.....	21
62.....	21
63.....	22
64.....	22
65.....	23
66.....	23
67.....	24
68.....	24
69.....	25
70.....	26
71.....	26
72.....	27
73.....	28

#### 4- to 6-Blade Knives

91.....	29
92.....	29
96.....	30
99.....	31





**No. 46-24**

PRICE \_\_\_\_\_

**BEAUTIFUL STREAMLINED POCKET KNIFE DISPLAY CASE**

■ This handsome, bleached-oak display blends with any background. A bright red panel sets off the knives to the best advantage—at the same time attracting all eyes to your cutlery display. The curved glass front—the last word in modern design—enhances the presentation of the knives and permits them to be seen from the sides as well as the front.

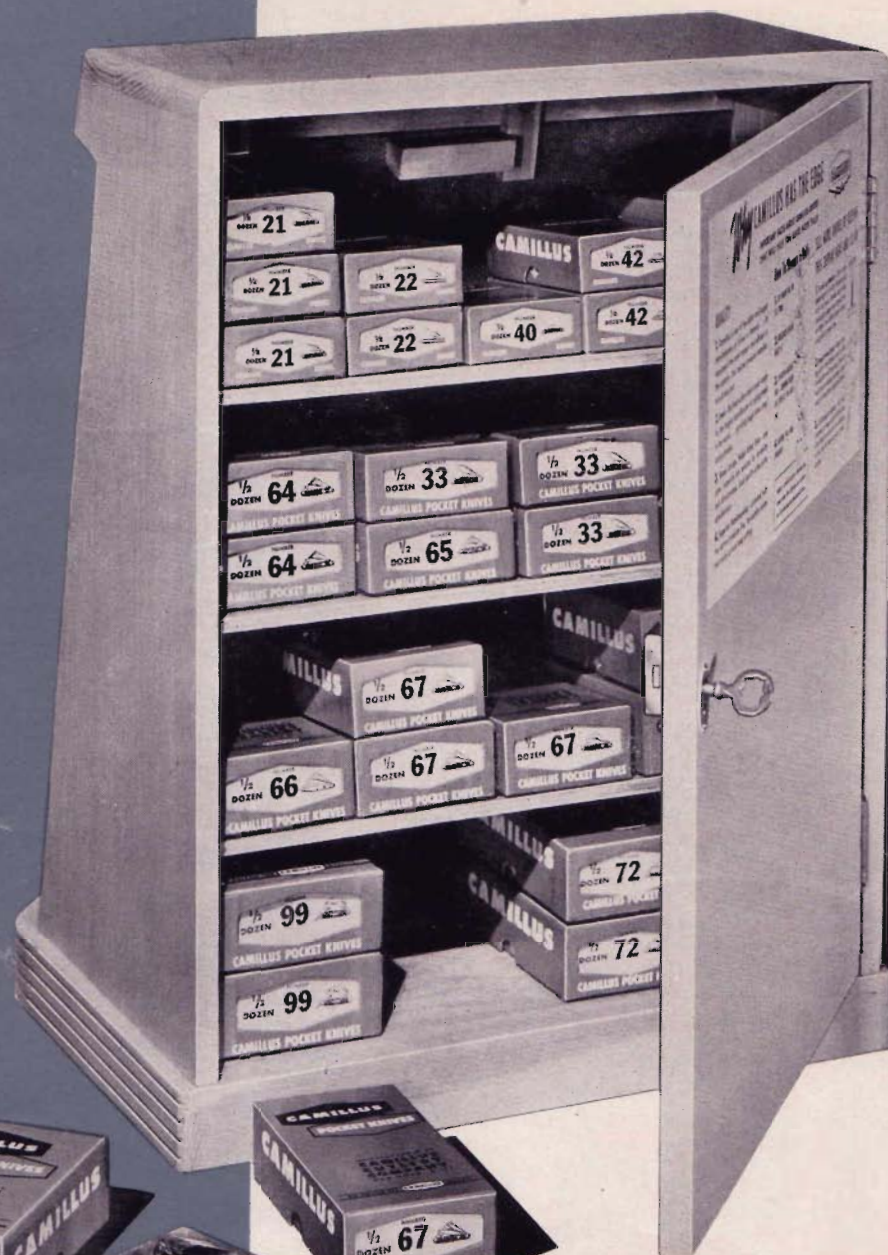
■ Display panel holds 24 knives, all sizes. White plastic strips for marking numbers and prices. Size: 18 $\frac{1}{4}$ " high; 13 $\frac{3}{4}$ " wide; 10" deep (at base). Case securely packed in corrugated container.



SEE OTHER SIDE FOR  
DETAILS OF BACK OF CASE







HERE'S SIMPLER HANDLING AND STOCKING —  
FASTER DISTRIBUTION AND SALES — FOR YOU

**SIMPLE AND COMPLETE STOCK COMPARTMENT PLUS CLEVER PACKAGING.** Large stock compartment holds up to 24 dozen knives. Removable shelves allow easy access to display panel. The sturdy lock prevents pilfering. Complete instructions on back of door give (1) Key selling points for dealer clerks, (2) How to sharpen and take care of knives, (3) How to set up display and keep it neat.

These cleverly-designed boxes have been widely acclaimed as a great advance in hardware packaging. The number on the bottom section prevents mix-ups. A picture of the knife on the end of the box aids quick identification. The large, simple numbers facilitate selection of stock. Cellophane wrapping on the knives minimizes handling and spoilage and adds sales appeal. The attractive design of the boxes makes them good display material.



